

CORPUS CHRISTI, TEXAS

RNAV (GPS) RWY 31R

APCH CRS	Rwy Idg	5000
309°	TDZE	18
	Arpt Elev	18

AL-98 [USN]

CORPUS CHRISTI NAS (TRUAX FLD) (KNGP)

When local altimeter setting not received, use Corpus Christi altimeter setting.
 Baro VNAV NA below -15°C (5°F) and above 42°C (108°F)
 Baro VNAV NA when local altimeter not available.

MISSED APPROACH: Climbing right turn to 2000 direct FOLEM and hold.

ATIS ★
114.0 127.9 290.9

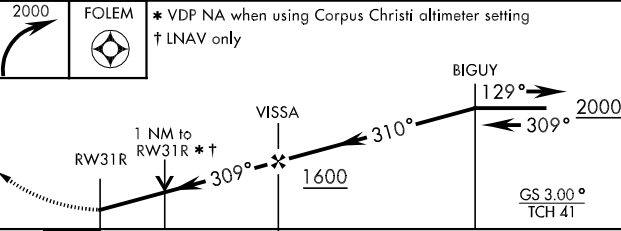
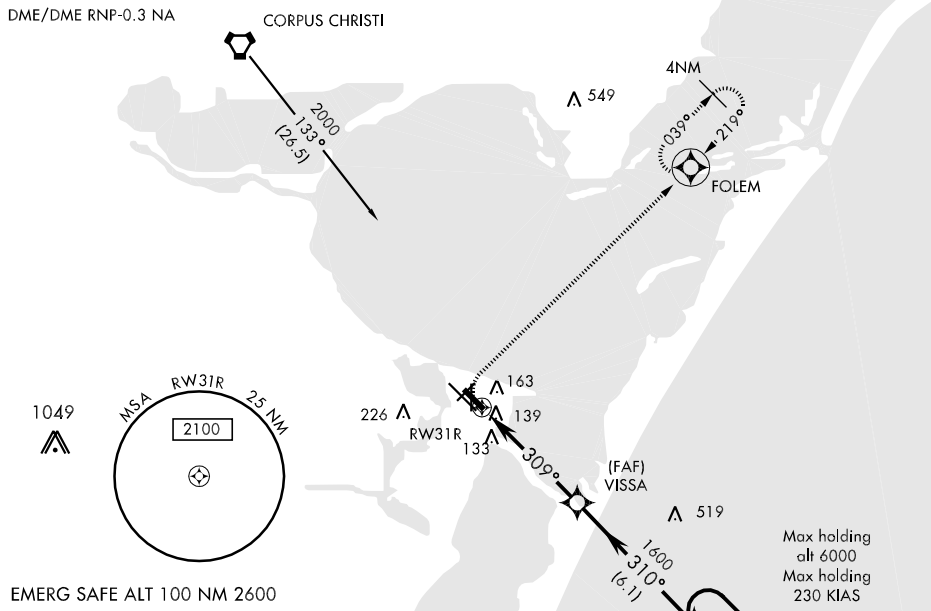
CORPUS CHRISTI APP CON
125.4 307.9

NAVY CORPUS TOWER ★
134.85 340.2 (N)
125.525 360.2 (S)

GND CON
118.7 257.85

CLNC DEL
314.3

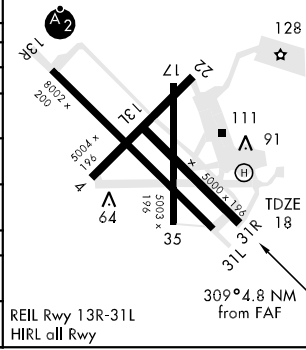
ASR/PAR



Max holding alt 6000
 Max holding 230 KIAS

ELEV 18

CATEGORY	A		B		C		D	
RNAV/VNAV DA	380-1¼		362		400-1		400-1¼	
RNAV MDA	400-1		382 (400-1)		480-1½		580-2	
CIRCLING	480-1¼ 462 (500-1¼)		480-1½ 462 (500-1½)		440-1½ 422 (500-1½)		440-2 422 (500-2)	
S-ASR 31R	440-1 422 (500-1)		440-1¼ 422 (500-1¼)		440-1½ 422 (500-1½)		440-2 422 (500-2)	
CORPUS CHRISTI ALTIMETER SETTING								
RNAV MDA	440-1 422 (500-1)		440-1¼ 422 (500-1¼)		500-1½ 482 (500-1½)		580-2 562 (600-2)	
CIRCLING	500-1 482 (500-1)		500-1½ 482 (500-1½)		580-2 562 (600-2)			



SC-3, 22 OCT 2009 to 19 NOV 2009

SC-3, 22 OCT 2009 to 19 NOV 2009

CORPUS CHRISTI, TEXAS
 Amdt 1 09015

27°42'N-97°17'W

CORPUS CHRISTI NAS (TRUAX FLD) (KNGP)

RNAV (GPS) RWY 31R