

CORPUS CHRISTI, TEXAS

RNAV (GPS) RWY 31L

CORPUS CHRISTI NAS (TRUAX FLD) (KNGP)

AL-98 [USN]

APCH CRS	Rwy Idg	8002
309°	TDZE	17
	Arpt Elev	18

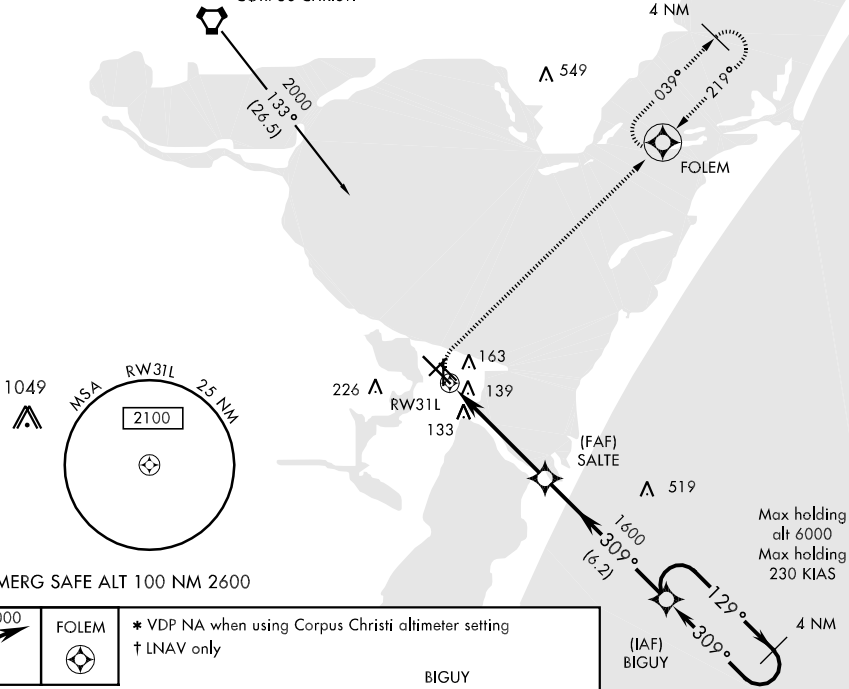
▼ When local altimeter setting not received, use Corpus Christi altimeter setting.
 Baro VNAV NA below -15°C (5°F) and above 42°C (108°F)
 Baro VNAV NA when local altimeter not available.

MISSED APPROACH: Climbing right turn to 2000 direct FOLEM and hold.

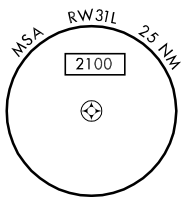
ATIS ★	CORPUS CHRISTI APP CON	NAVY CORPUS TOWER ★	GND CON	CLNC DEL	ASR/PAR
114.0 127.9 290.9	125.4 307.9	134.85 340.2 (N) 125.525 360.2 (S)	118.7 257.85	314.3	

DME/DME RNP-0.3 NA

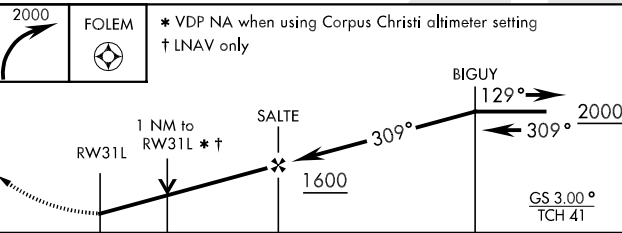
CORPUS CHRISTI



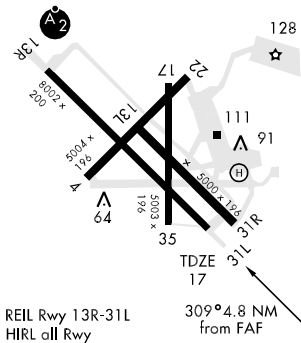
1049



EMERG SAFE ALT 100 NM 2600



ELEV 18



CATEGORY	A	B	C	D
LNAV MDA	400-1	383 (400-1)		400-1½ 383 (400-1½)
LNAV/VNAV DA	440-1½	423 (500-1½)		580-2 562 (600-2)
CIRCLING	480-1½	462 (500-1½)		580-2 562 (600-2)
S-PAR 31L	117-½	100 (100-½)		GS 3.0°
CORPUS CHRISTI ALTIMETER SETTING				
LNAV MDA	440-1	423 (500-1)	440-1½ 423 (500-1½)	440-1½ 423 (500-1½)
CIRCLING	500-1	482 (500-1)	500-1½ 482 (500-1½)	580-2 562 (600-2)

CORPUS CHRISTI, TEXAS
 Orig 09015

27°42'N-97°17'W

CORPUS CHRISTI NAS (TRUAX FLD) (KNGP)

RNAV (GPS) RWY 31L

SC-3, 22 OCT 2009 to 19 NOV 2009

SC-3, 22 OCT 2009 to 19 NOV 2009