

CORPUS CHRISTI, TEXAS

RNAV (GPS) RWY 22

CORPUS CHRISTI NAS (TRUAX FLD) (KNGP)

AL-98 [USN]

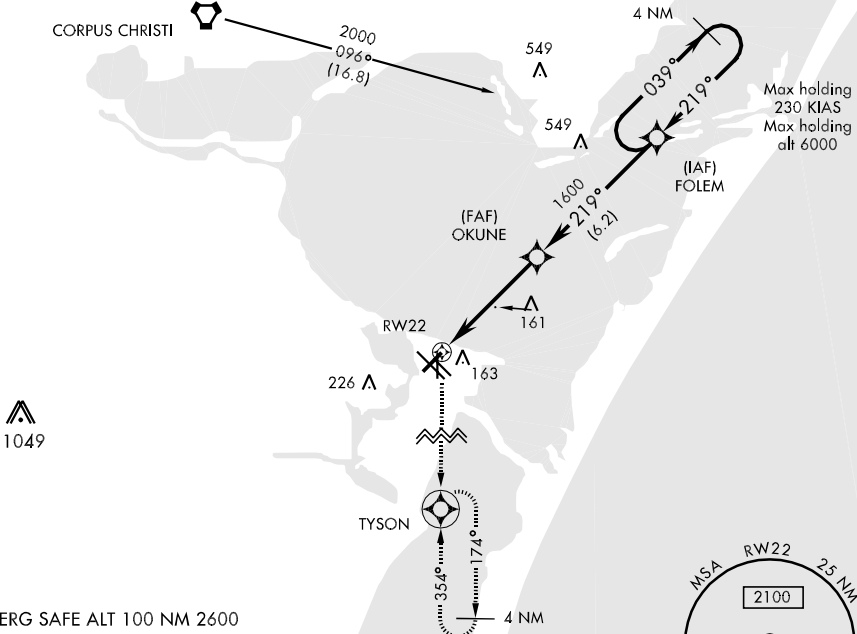
APCH CRS	Rwy Idg	5004
219°	TDZE	15
	Arpt Elev	18

When local altimeter setting not received, use Corpus Christi altimeter setting.
 Baro VNAV NA below -15°C (5°F) and above 42°C (108°F)
 Baro VNAV NA when local altimeter not available.

MISSED APPROACH: Climbing left turn to 2000 direct TYSON and hold.

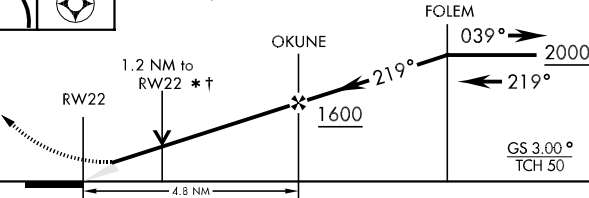
ATIS ★	CORPUS CHRISTI APP CON	NAVY CORPUS TOWER ★	GND CON	CLNC DEL	ASR/PAR
114.0 127.9 290.9	125.4 307.9	134.85 340.2 (N) 125.525 360.2 (S)	118.7 257.85	314.3	

DME/DME RNP-0.3 NA

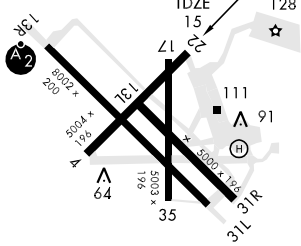


EMERG SAFE ALT 100 NM 2600

2000	TYSON	* VDP NA when using Corpus Christi altimeter setting.
		† LNAV only



ELEV 18	219° 4.8 NM from FAF
	TDZE 15



CATEGORY	A	B	C	D
LNAV/VNAV DA	340-1¼		325	(400-1¼)
LNAV MDA	420-1	405 (500-1)	420-1¼	405 (500-1¼)
CIRCLING	480-1¼	462 (500-1¼)	462 (500-1½)	562 (600-2)
CORPUS CHRISTI ALTIMETER SETTING				
LNAV MDA	460-1	445 (500-1)	460-1¼	460-1½
			445 (500-1¼)	445 (500-1½)
CIRCLING	500-1	482 (500-1)	500-1½	580-2
			482 (500-1½)	562 (600-2)

REIL Rwy 13R-31L
HIRL all Rwy

CORPUS CHRISTI, TEXAS
Orig 09015

27°42'N-97°17'W

CORPUS CHRISTI NAS (TRUAX FLD) (KNGP)

RNAV (GPS) RWY 22

SC-3, 22 OCT 2009 to 19 NOV 2009

SC-3, 22 OCT 2009 to 19 NOV 2009