

APCH CRS	Rwy Idg	<b>5003</b>
<b>174°</b>	TDZE	<b>18</b>
	Arpt Elev	<b>18</b>

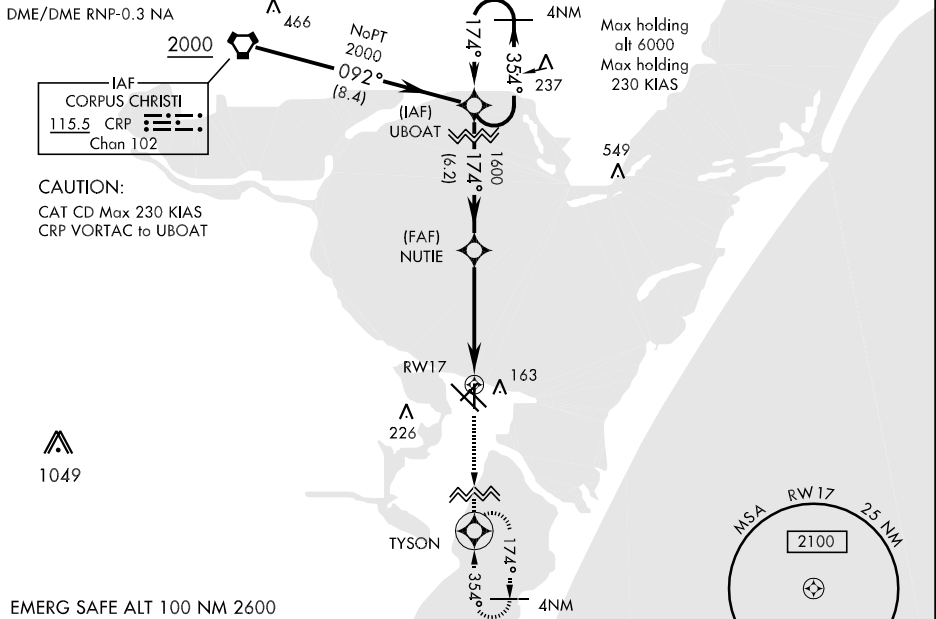
AL-98 [USN]

CORPUS CHRISTI NAS (TRUAX FLD) (KNGP)

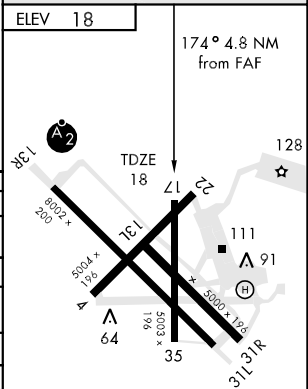
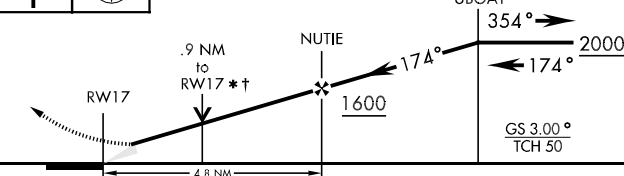
When local altimeter setting not received, use Corpus Christi altimeter setting.  
 Baro VNAV NA below -15°C (5°F) and above 42°C (108°F).  
 Baro VNAV NA when local altimeter not available.

MISSED APPROACH: Climb to 2000 direct TYSON and hold.

ATIS ★	CORPUS CHRISTI APP CON	NAVY CORPUS TOWER ★	GND CON	CLNC DEL	ASR/PAR
<b>114.0 127.9 290.9</b>	<b>120.9 348.725</b>	<b>134.85 340.2 (N)</b> <b>125.525 360.2 (S)</b>	<b>118.7 257.85</b>	<b>314.3</b>	



2000	TYSON	* VDP NA when using Corpus Christi altimeter setting.
↑		† LNAV only



CATEGORY	A	B	C	D
LNAV MDA	340-1	322	(400-1)	
LNAV/VNAV DA	340-1½	322	(400-1½)	
CIRCLING	480-1¼ 462 (500-1¼)	480-1½ 462 (500-1½)	580-2 562 (600-2)	
S-PAR-17	118-½	100 (100-½)	GS 3.0°	
CORPUS CHRISTI ALTIMETER SETTING				
LNAV MDA	360-1	342 (400-1)	360-1¼ 342 (400-1¼)	
CIRCLING	500-1 482 (500-1)	500-1½ 482 (500-1½)	580-2 562 (600-2)	

REIL Rwy 13R-31L  
 HIRL all Rwy

SC-3, 22 OCT 2009 to 19 NOV 2009

SC-3, 22 OCT 2009 to 19 NOV 2009