

CORPUS CHRISTI, TEXAS

RNAV (GPS) RWY 13L

APCH CRS	Rwy ldg	5000
129°	TDZE	18
	Arpt Elev	18

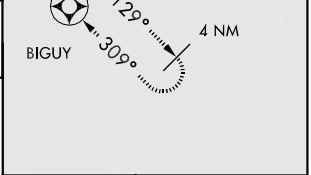
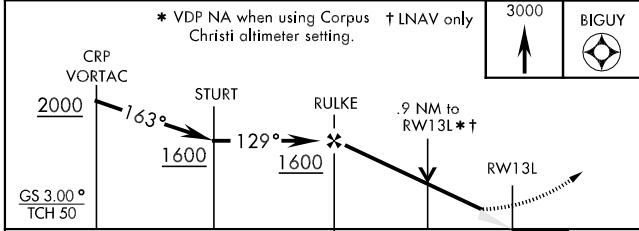
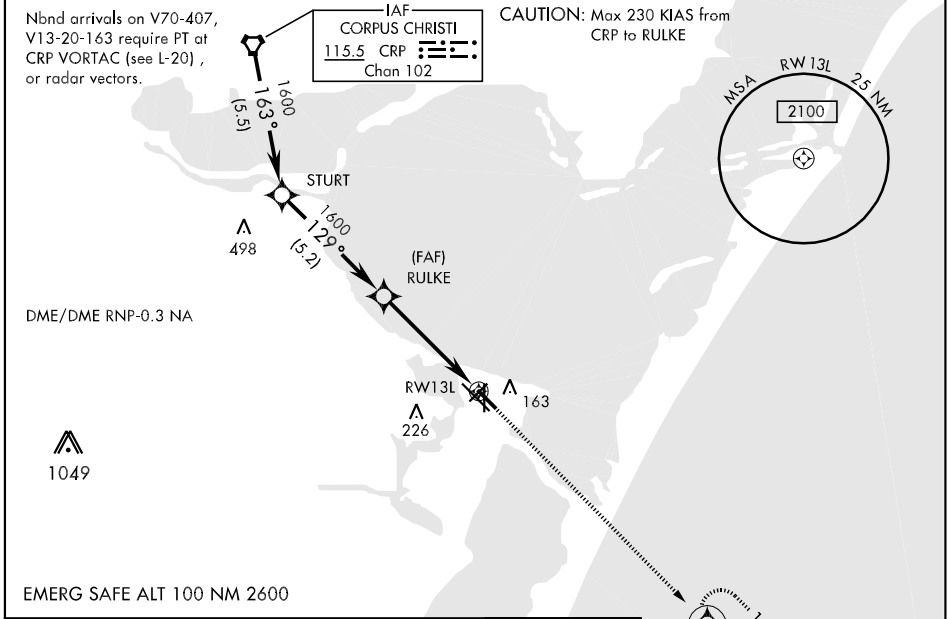
AL-98 [USN]

CORPUS CHRISTI NAS (TRUAX FLD) (KNGP)

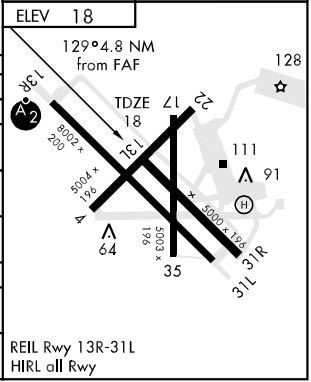
When local altimeter setting not received, use Corpus Christi altimeter setting.
 Baro VNAV NA below -15°C (5°F) and above 42°C (108°F)
 Baro VNAV NA when local altimeter not available.

MISSED APPROACH: Climb to 3000 direct BIGUY and hold.

ATIS *	CORPUS CHRISTI APP CON	NAVY CORPUS TOWER *	GND CON	CLNC DEL	ASR/PAR
114.0 127.9 290.9	120.9 348.725	134.85 340.2 (N) 125.525 360.2 (S)	118.7 257.85	314.3	



CATEGORY	A	B	C	D
LNAV/VNAV DA	340-1¼		322	(400-1¼)
LNAV MDA	360-1		342	(400-1)
CIRCLING	480-1¼ 462 (500-1¼)		480-1½ 462 (500-1½)	
S-ASR 13L	400-1 382 (400-1)		400-1½ 382 (400-1½)	
CORPUS CHRISTI ALTIMETER SETTING				
LNAV MDA	380-1		362	(400-1)
CIRCLING	500-1¼ 482 (500-1¼)		500-1½ 482 (500-1½)	



CORPUS CHRISTI, TEXAS
Amdt 1 09015

27°42'N-97°17'W

CORPUS CHRISTI NAS (TRUAX FLD) (KNGP)

RNAV (GPS) RWY 13L

SC-3, 22 OCT 2009 to 19 NOV 2009

SC-3, 22 OCT 2009 to 19 NOV 2009