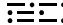


LOCOE ONE DEPARTURE (LOCOE1 • LOCOE)

CORPUS CHRISTI, TEXAS

ATIS ★ 114.0 127.9 290.9
 CLNC DEL
 314.3
 GND CON
 118.7 257.85
 NAVY CORPUS TOWER ★
 134.85 340.2 (N)
 125.525 360.2 (S)
 CORPUS CHRISTI DEP CON
 125.4 307.9

SL-98 [USN]


CORPUS CHRISTI
 115.5 CRP 
 Chan 102


Rwy	Knots	60	120	180	240
13L/R	V/V(fpm)	320	640	960	1280
31L/R	V/V(fpm)	250	500	750	1000

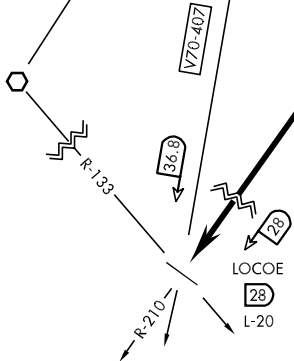
ATC Minimum Climb Rate to 5000

DME REQUIRED

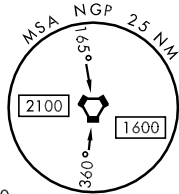

 1049

TRUAX
 114.0 NGP 
 Chan 87

ALICE
 114.5 ALI 



CAUTION:
 Use NGP TACAN for R-210 only.
 VOR R-210 unusable.



EMERG SAFE ALT 100 NM 2600

DEPARTURE ROUTE DESCRIPTION

TAKE-OFF RWY 13L/R: Climb via heading 129° to intercept NGP VORTAC 7 DME arc. Arc CW South of NGP via 7 DME arc to JEVD0, NGP R-210/7 DME. Cross JEVD0 at or above 5000. Thence....

TAKE-OFF RWY 31L/R: Climb via heading 309° to NGP VORTAC 2.9 DME, then climbing right turn via heading 355° to intercept NGP 7 DME arc. Arc CW North of NGP via 7 DME arc to NUYER, NGP R-023/7 DME. Then via R-023 to NGP and R-210 to JEVD0, NGP R-210/7 DME. Cross JEVD0 at above 5000. Thence....

THENCE.... from JEVD0 via NGP R-210 to LOCOE. Then via assigned route. Expect clearance to filed altitude/flight level 10 minutes after departure.

SC-3, 22 OCT 2009 to 19 NOV 2009

SC-3, 22 OCT 2009 to 19 NOV 2009