

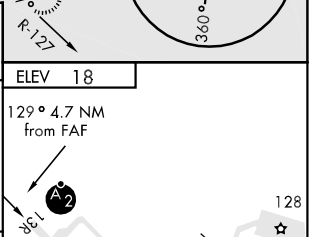
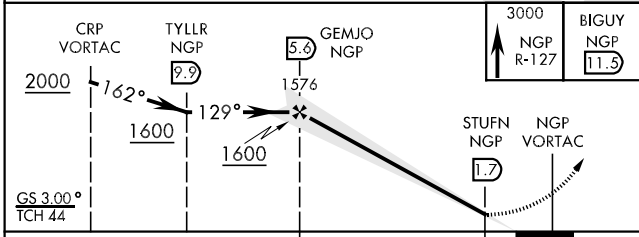
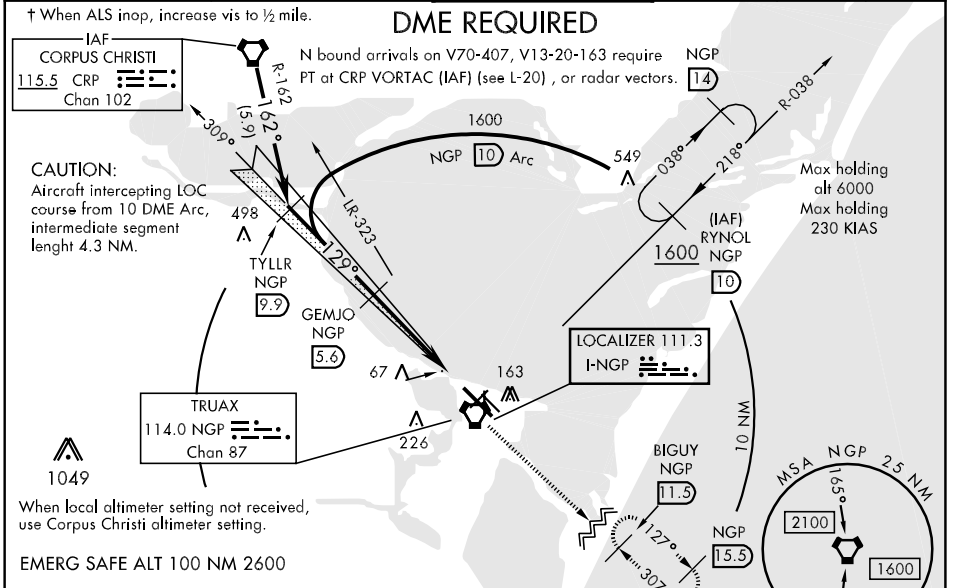
LOC I-NGP <b>111.3</b>	APCH CRS <b>129°</b>	Rwy Idg TDZE Arpt Elev <b>8002</b> <b>13</b> <b>18</b>	AL-98 [USN]	CORPUS CHRISTI NAS (TRUAX FLD) (KNGP)
---------------------------	-------------------------	---	-------------	---------------------------------------

\* When ALS inop, increase CAT AB vis to ¾ mile.  
 \*\* When ALS inop, increase vis to 1 mile.  
 \*\*\* When ALS inop, increase CAT ABC vis to 1 mile, CAT D vis to 1 ¼ miles.

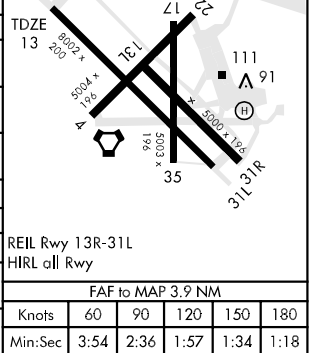


MISSED APPROACH: Climb to 3000, intercept NGP VORTAC R-127 to BIGUY and hold.

ATIS * <b>114.0 127.9 290.9</b>	CORPUS CHRISTI APP CON <b>120.9 348.725</b>	NAVY CORPUS TOWER * <b>134.85 340.2 (N)</b> <b>125.525 360.2 (S)</b>	GND CON <b>118.7 257.85</b>	CLNC DEL <b>314.3</b>	ASR/PAR
------------------------------------	--	--	--------------------------------	--------------------------	---------



CATEGORY	A	B	C	D
S-ILS 13R*	213-½	200 (200-½)	213-¾	200 (200-¾)
S-LOC/DME 13R**	320-¾		307 (400-¾)	
CIRCLING	480-1	462 (500-1)	480-1½ 462 (500-1½)	580-2 562 (600-2)
S-PAR 13R †	113-¼		100 (100-¼)	GS 3.0°
CORPUS CHRISTI ALTIMETER SETTING				
S-ILS 13R**	245-¾		232 (300-¾)	
S-LOC/DME 13R***	360-¾		347 (400-¾)	360-1 347 (400-1)
CIRCLING	500-1	482 (500-1)	500-1½ 482 (500-1½)	580-2 562 (600-2)



SC-3, 22 OCT 2009 to 19 NOV 2009

SC-3, 22 OCT 2009 to 19 NOV 2009