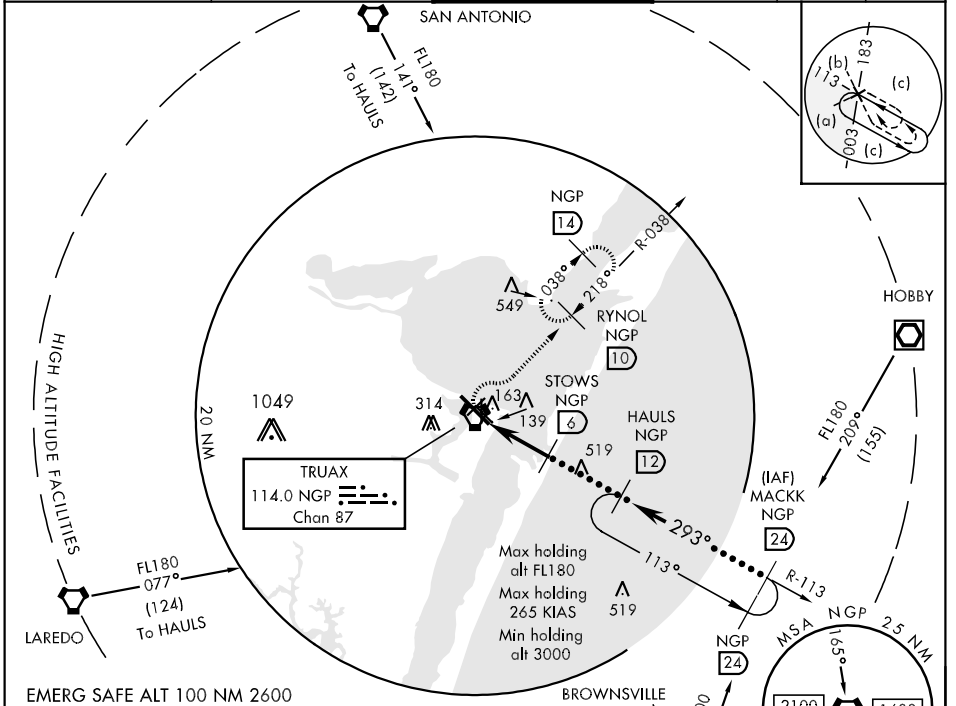


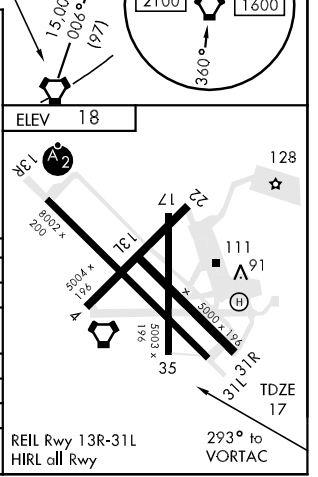
TACAN NGP Chan 87	APCH CRS 293°	Rwy Idg TDZE Arpt Elev 8002 17 18	JAL-98 [USN]	CORPUS CHRISTI NAS (TRUAX FLD) (KNGP)
-----------------------------	-------------------------	---	--------------	---------------------------------------

When local altimeter setting not received, use Corpus Christi altimeter setting. MISSED APPROACH: Climb to 500 via NGP VORTAC R-113, then climbing right turn to 1600, intercept NGP R-038 to RYNOL and hold.

ATIS ★ 114.0 127.9 290.9	CORPUS CHRISTI APP CON 125.4 307.9	NAVY CORPUS TOWER ★ 134.85 340.2 (N) 125.525 360.2 (S)	GND CON 118.7 257.85	CLNC DEL 314.3	ASR/PAR
------------------------------------	--	--	--------------------------------	--------------------------	---------



500 NGP R-113	1600 NGP R-038	† VDP NA when using Corpus Christi altimeter setting.	HAULS	MACK 24
		3000	15,000*	* or as assigned
5.0 NM		293°	3000	2.65° TCH 42
CATEGORY	C	D	E	
S-31L	400-1 383 (400-1)	400-1½ 383 (400-1½)		
CIRCLING	480-1½ (500-1½)	580-2 (600-2)	620-2½ (700-2¼)	
S-PAR 31L	117-½ 100 (100-½)		GS 3.00°	
CORPUS CHRISTI ALTIMETER SETTING				
S-31L	440-1½ 423 (500-1½)		440-1½ 423 (500-1½)	
CIRCLING	500-1½ (500-1½)	580-2 (600-2)	660-2½ (700-2¼)	
	482 (500-1½)	562 (600-2)	642 (700-2¼)	



SC-3, 22 OCT 2009 to 19 NOV 2009

SC-3, 22 OCT 2009 to 19 NOV 2009