

TACAN NGP Chan 87	APCH CRS 143°	Rwy Idg 8002 TDZE 13 Arpt Elev 18
-------------------	---------------	---

JAL-98 [USN]

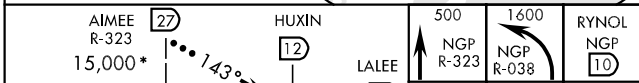
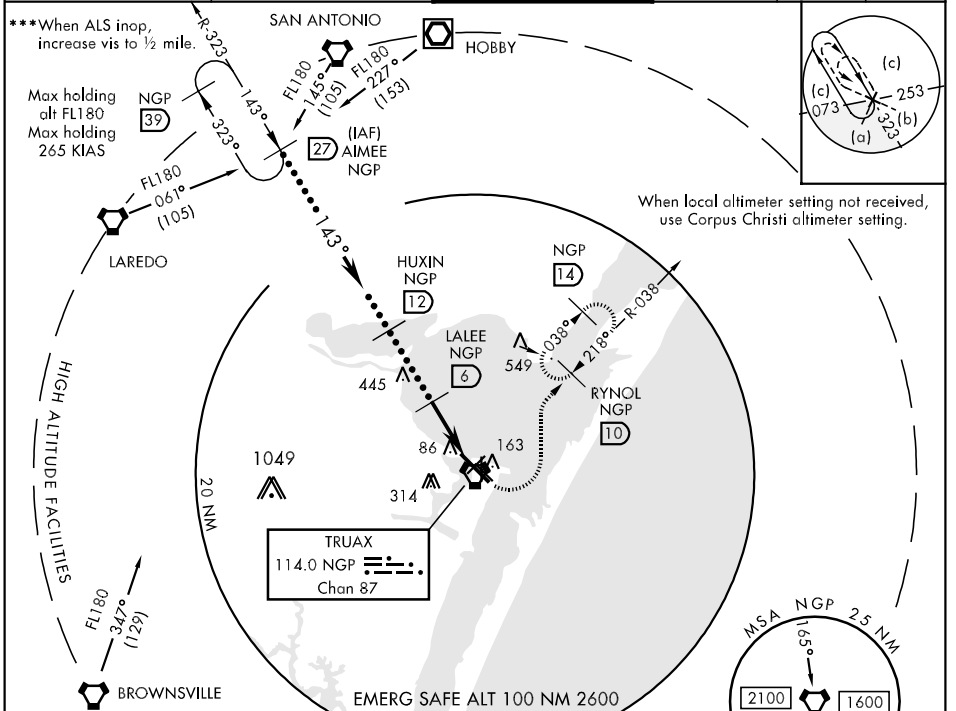
CORPUS CHRISTI NAS (TRUAX FLD) (KNGP)

▼ * When ALS inop, increase CAT CD vis to 1 mile, CAT E to 1 1/4 miles.
 ** When ALS inop, increase CAT C vis to 1 mile, CAT DE to 1 1/4 miles.



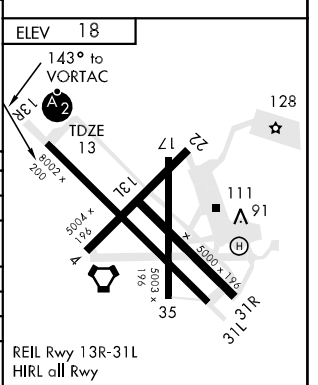
MISSED APPROACH: Climb to 500 via NGP VORTAC R-323, then climbing left turn to 1600 via NGP R-038 to RYNOL and hold.

ATIS * 114.0 127.9 290.9	CORPUS CHRISTI APP CON 120.9 348.725	NAVY CORPUS TOWER * 134.85 340.2 (N) 125.525 360.2 (S)	GND CON 118.7 257.85	CLNC DEL 314.3	ASR/PAR
-----------------------------	---	--	-------------------------	-------------------	---------



* or as assigned	3000	1600	4.3 NM
------------------	------	------	--------

CATEGORY	C	D	E
S-13R *	340-3/4 327	(400-3/4)	340-1 327 (400-1)
CIRCLING	480-1 1/2 462 (500-1 1/2)	580-2 562 (600-2)	620-2 1/4 602 (700-2 1/4)
S-PAR 13R ***	113-1/4	100 (100-1/4)	GS 3.00°
CORPUS CHRISTI ALTIMETER SETTING			
S-13R **	380-3/4 367 (400-3/4)	380-1 367	(400-1)
CIRCLING	500-1 1/2 482 (500-1 1/2)	580-2 562 (600-2)	660-2 1/4 642 (700-2 1/4)



SC-3, 22 OCT 2009 to 19 NOV 2009

SC-3, 22 OCT 2009 to 19 NOV 2009