

# RNAV (GPS) RWY 28R

COLUMBUS / PORT COLUMBUS INTL (CMH)

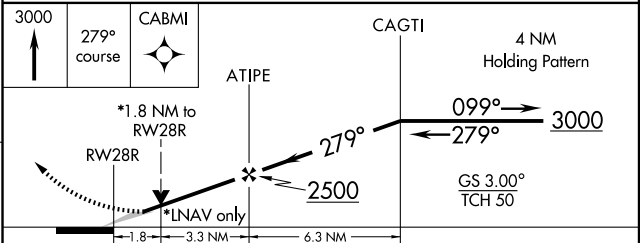
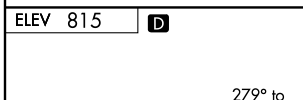
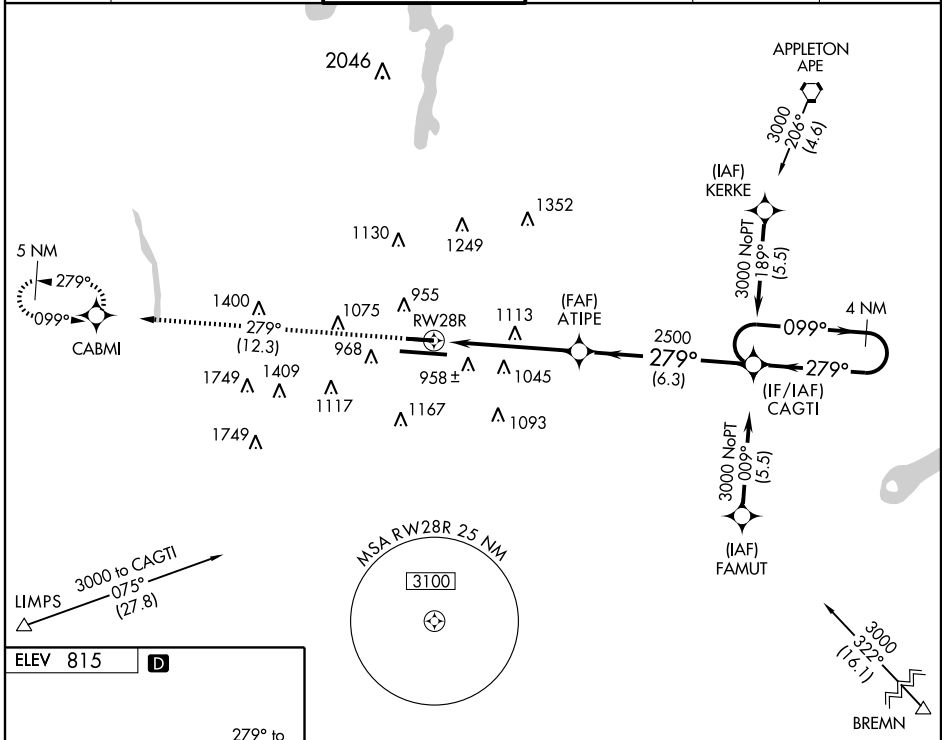
APP CRS <b>279°</b>	Rwy Idg TDZE Apt Elev	<b>8000</b> <b>813</b> <b>815</b>
------------------------	-----------------------------	---

Baro-VNAV NA below -17°C (2°F).  
GPS or RNP-0.3 required.  
DME/DME RNP-0.3 NA.



MISSED APPROACH: Climb to 3000 via course 279° to CABMI WP and hold.

ATIS <b>124.6</b>	COLUMBUS APP CON <b>125.95 371.975</b>	COLUMBUS TOWER <b>132.7 257.8</b>	GND CON <b>121.9 348.6</b>	CLNC DEL <b>126.3</b>	UNICOM <b>122.95</b>
----------------------	---	--------------------------------------	-------------------------------	--------------------------	-------------------------



CATEGORY	A	B	C	D
GLS PA DA	NA			
LNAV/VNAV	1160-¾ 347 (400-¾)			
LNAV MDA	1420-¾ 607 (700-¾)	1420-1¼ 607 (700-1¼)	1420-1½ 607 (700-1½)	1420-2 605 (700-2)
CIRCLING	1420-1¼ 605 (700-1¼)	1420-1¾ 605 (700-1¾)	1420-2 605 (700-2)	1420-2 605 (700-2)

EC-2, 22 OCT 2009 to 19 NOV 2009

EC-2, 22 OCT 2009 to 19 NOV 2009