

COLUMBUS, OHIO

AL-94 (FAA)

# RNAV (GPS) RWY 10R

COLUMBUS / PORT COLUMBUS INTL (CMH)

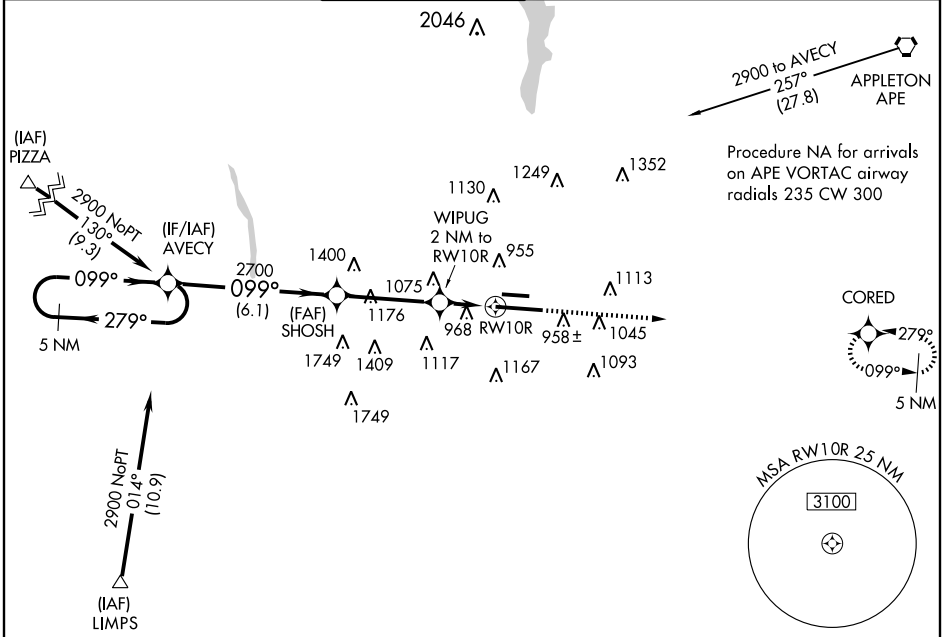
WAAS CH <b>99603</b> <b>W10A</b>	APP CRS <b>099°</b>	Rwy Idg TDZE <b>810</b> Apt Elev <b>815</b>	<b>10125</b>
--	------------------------	---	--------------

**▼** DME/DME RNP-0.3 NA. For uncompensated Baro-VNAV systems, LNAV/VNAV NA below -16°C (4°F) or above 47°C (116°F). For inoperative MALS/R, increase LPV visibility to 1 all Cats.

**MALS/R**  


**MISSED APPROACH:** Climb to 3000 direct CORED and hold.

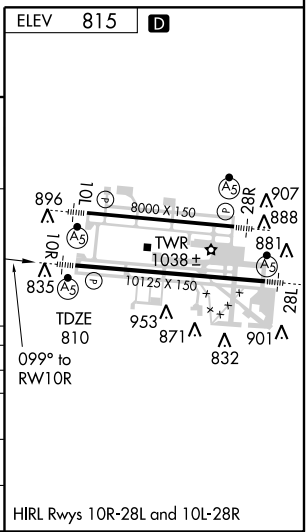
ATIS <b>124.6</b>	COLUMBUS APP CON <b>125.95 371.975</b>	COLUMBUS TOWER <b>132.7 257.8</b>	GND CON <b>121.9 348.6</b>	CLNC DEL <b>126.3</b>	UNICOM <b>122.95</b>
----------------------	---	--------------------------------------	-------------------------------	--------------------------	-------------------------



EC-2, 22 OCT 2009 to 19 NOV 2009

EC-2, 22 OCT 2009 to 19 NOV 2009

5 NM Holding Pattern		AVECY	SHOSH	WIPUG 2 NM to RWY10R	3000	CORED
2900		279°	099°	2700	* LNAV only	
GS 3.00° TCH 54		VGSi and RNAV Glidepath not coincident.		* 1480	* 1.2 NM to RWY10R	
		6.1 NM	3.7 NM	0.8	1.2	
CATEGORY	A	B	C	D		
LPV DA		1078/24	268 (300-1/2)			
LNAV/VNAV DA		1268/50	458 (500-1)			
LNAV MDA	1240/24	430 (500-1/2)	1240/40 430 (500-3/4)	1240/50 430 (500-1)		
CIRCLING	1340-1	525 (600-1)	1340-1 1/2 525 (600-1 1/2)	1380-2 565 (600-2)		



COLUMBUS, OHIO  
Amdt 1 09295

40°00'N - 82°54'W

# COLUMBUS / PORT COLUMBUS INTL (CMH)

## RNAV (GPS) RWY 10R