

WEST POINT ONE RWY 13R/31L DEPARTURE

SHL-91 [USAF]

COLUMBUS, MISSISSIPPI

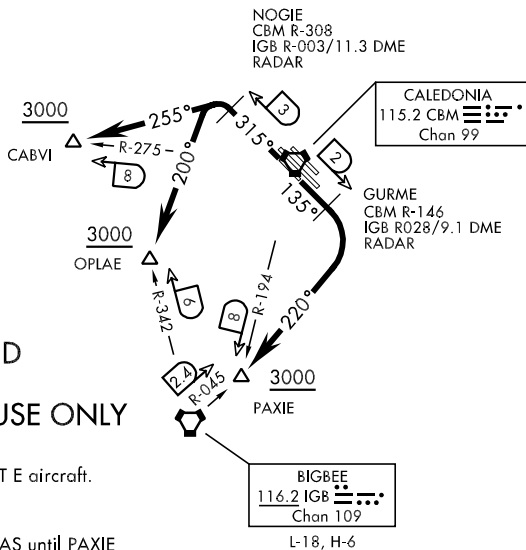
ATIS 115.2 273.5
 CLNC DEL 126.25 269.55
 GND CON 121.9 275.8
 COLUMBUS TOWER 126.65 379.925
 COLUMBUS DEP CON 132.025 291.65

A
 978

Rwy	Knots	60	120	180	240	300	360
13R (a)	V/V(fpm)	340	680	1010	1350	1680	2020
31L (b)	V/V(fpm)	400	800	1200	1600	2000	2400

ATC Climb Rate

- (a) to PAXIE or 3000
- (b) to CABVI / OPLAE or 3000



RADAR REQUIRED

14 FTW AIRCRAFT USE ONLY

Procedure not authorized for CAT E aircraft.

Rwy 13R: Do not exceed 220 KIAS until PAXIE
 Rwy 31L: Do not exceed 220 KIAS until CABVI / OPLAE

DEPARTURE ROUTE DESCRIPTION (BIGBEE)

TAKE-OFF RWY 13R: Cross DER at least 35' AGL/229 MSL. Climb on track 135° to GURME (IGB VORTAC R-028/9.1 DME) then turn right heading 220° to PAXIE (IGB R-045/2.4 DME). Cross PAXIE at or above 3000, then via assigned route or ATC instructions.

TAKE-OFF RWY 31L: Cross DER at least 35' AGL/225 MSL. Climb on track 315° to NOGIE (IGB VORTAC R-003/11.3 DME) then turn left heading 200° to OPLAE (IGB R-342/6 DME). Cross OPLAE at or above 3000, then via assigned route or ATC instructions..

DEPARTURE ROUTE DESCRIPTION (CALEDONIA)

TAKE-OFF RWY 13R: Cross DER at least 35' AGL/229 MSL. Climb on track 135° to GURME (CBM VORTAC R-146/2 DME) then turn right heading 220° to PAXIE (CBM R-194/8 DME). Cross PAXIE at or above 3000, then via assigned route or ATC instructions.

TAKE-OFF RWY 31L: Cross DER at least 35' AGL/225 MSL. Climb on track 315° to NOGIE (CBM VORTAC R-308/3 DME) then turn left heading 255° to CABVI (CBM R-275/8 DME). Cross CABVI at or above 3000, then via assigned route or ATC instructions..

WEST POINT ONE RWY 13R/31L DEPARTURE