

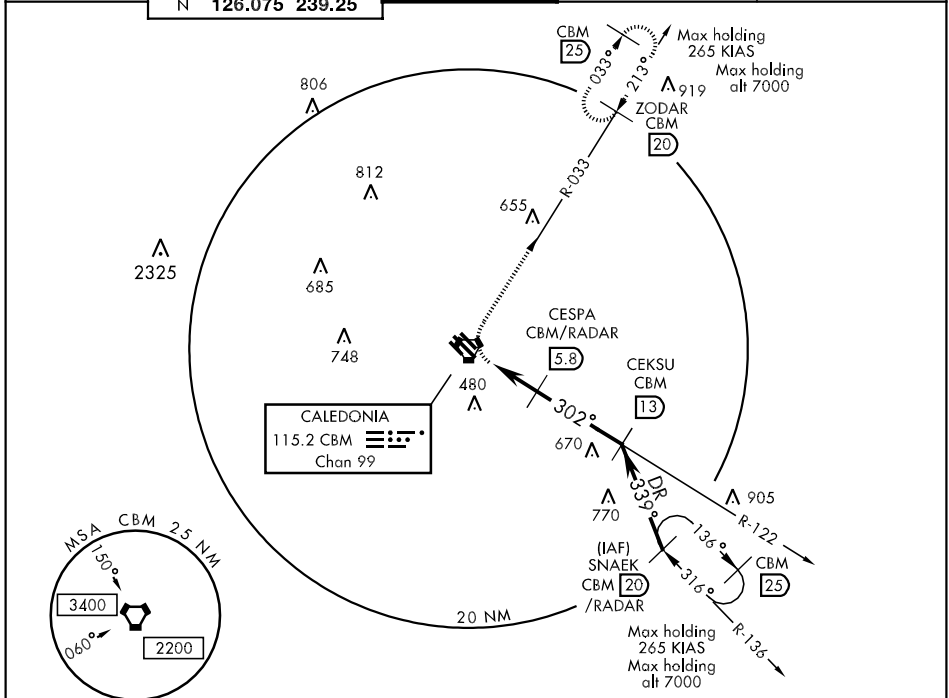
COLUMBUS, MISSISSIPPI

# VOR/DME or TACAN RWY 31R

VORTAC CBM <b>115.2</b> Chan <b>99</b>	APCH CRS <b>302°</b>	Rwy ldg TDZE Arpt Elev <b>8001</b> <b>218</b> <b>218</b>	AL-91 [USAF]	COLUMBUS AFB (KCBM)
--	-------------------------	---	--------------	---------------------

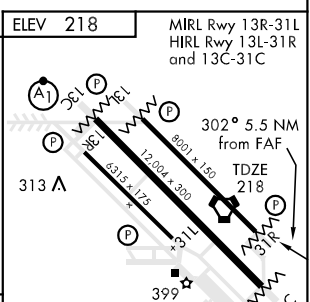
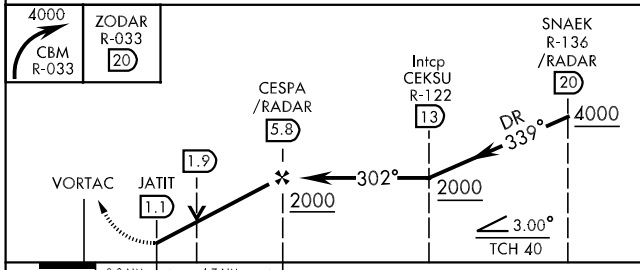
▼ MISSED APPROACH: Climbing right turn to 4000. Intercept CBM R-033 direct ZODAR and hold or as directed by ATC.

ATIS <b>115.2 273.5</b>	COLUMBUS APP CON SE <b>132.025 291.65</b> SW <b>135.6 323.275</b> N <b>126.075 239.25</b>	COLUMBUS TOWER <b>126.65 379.925</b>	GND CON <b>121.9 275.8</b>	CLNC DEL <b>269.55</b>
----------------------------	--	---	-------------------------------	---------------------------



## RADAR REQUIRED

EMERG SAFE ALT 100 NM 3700



	ELEV 218		MIRL Rwy 13R-31L HIRL Rwy 13L-31R and 13C-31C							
CATEGORY	A		B		C		D		E	
S-31R	780/50		562 (600-1)		780-1½ 562 (600-1½)		780-1¼ 562 (600-1¼)		780-2 562 (600-2)	
CIRCLING	840-1		622 (700-1)		840-1¾ 622 (700-1¾)		840-2 622 (700-2)		1300-3 1081 (1100-3)	
FAF to MAP 4.7 NM										
	Knots		60		90		120		150	
	Min:Sec		4:42		3:08		2:21		1:53	
			1:34		1:25					

COLUMBUS, MISSISSIPPI 33°39'N-88°27'W COLUMBUS AFB (KCBM)

Amdt 2 08269

# VOR/DME or TACAN RWY 31R

SC-4, 22 OCT 2009 to 19 NOV 2009

SC-4, 22 OCT 2009 to 19 NOV 2009