

COLUMBUS, MISSISSIPPI

# VOR/DME or TACAN RWY 31C

VORTAC CBM <b>115.2</b> Chan <b>99</b>	APCH CRS <b>317°</b>	Rwy Idg TDZE <b>214</b> Arpt Elev <b>218</b>
--	-------------------------	--

AL-91 [USAF]

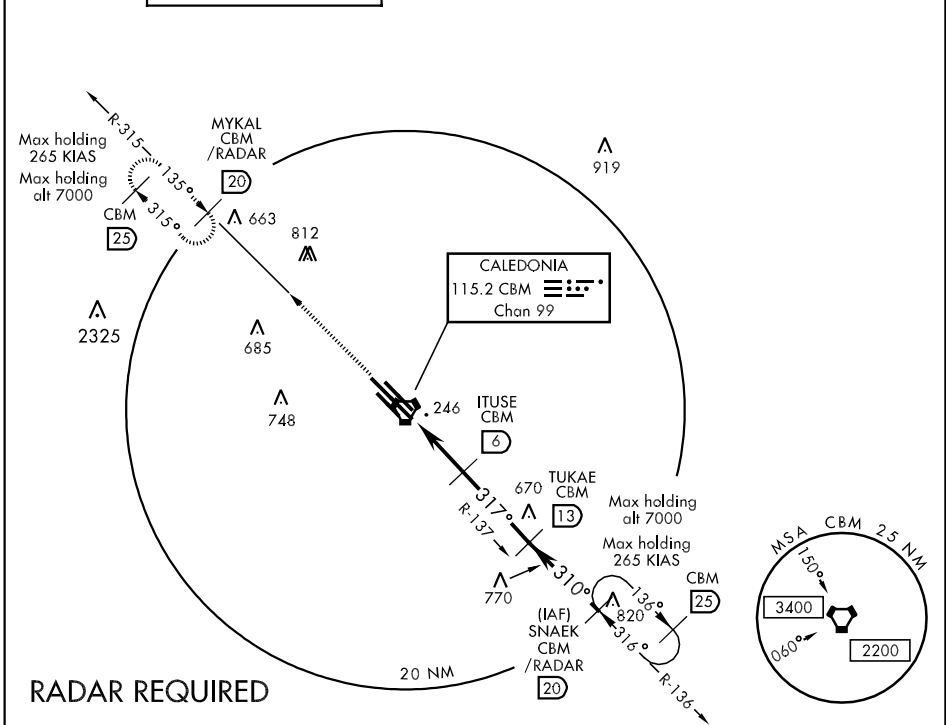
COLUMBUS AFB (KCBM)

⚠ \* When ALS inop, increase CAT AB RVR to 50 and vis to 1, CAT C RVR to 60 and vis to 1/4, CAT DE vis to 1/2 miles.

ALSF-1 

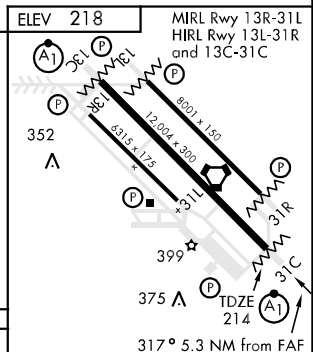
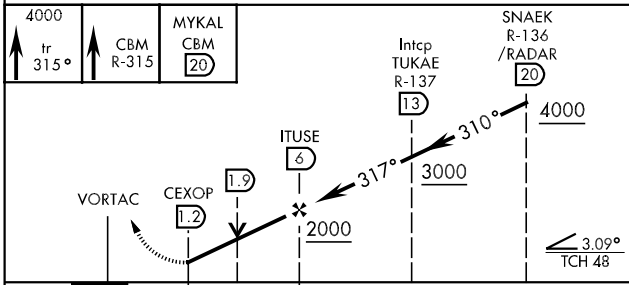
MISSED APPROACH: Track heading 315° to intercept the CBM R-315 outbound to MYKAL (CBM R-315/20) and hold. Maintain 4000.

ATIS <b>115.2 273.5</b>	COLUMBUS APP CON SE <b>132.025 291.65</b> SW <b>135.6 323.275</b> N <b>126.075 239.25</b>	COLUMBUS TOWER <b>126.65 379.925</b>	GND CON <b>121.9 275.8</b>	CLNC DEL <b>269.55</b>
----------------------------	--	---	-------------------------------	---------------------------



**RADAR REQUIRED**

EMERG SAFE ALT 100 NM 3700



CATEGORY	A	B	C	D	E
S-31C *	660/24 446 (500-1/2)		660/40 446 (500-3/4)	660/50 446 (500-1)	
CIRCLING	840-1 622 (700-1)		840-1 3/4 622 (700-1 3/4)	840-2 622 (700-2)	1300-3 082 (1100-3)

FAF to MAP 4.8 NM					
Knots	60	90	120	150	180
Min:Sec	4:48	3:12	2:24	1:55	1:36

COLUMBUS, MISSISSIPPI  
Amdt 4 08269

33° 39' N - 88° 27' W

COLUMBUS AFB (KCBM)

# VOR/DME or TACAN RWY 31C

SC-4, 22 OCT 2009 to 19 NOV 2009

SC-4, 22 OCT 2009 to 19 NOV 2009