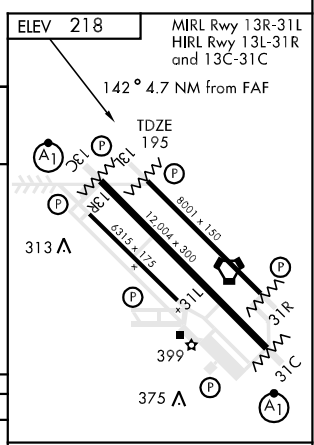
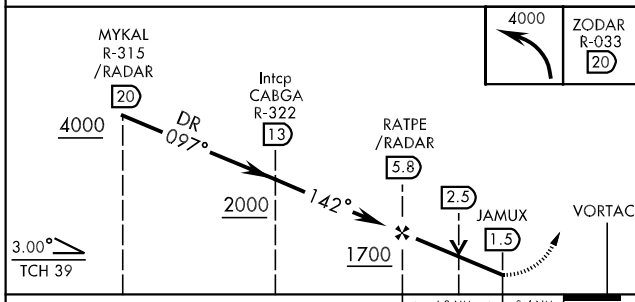
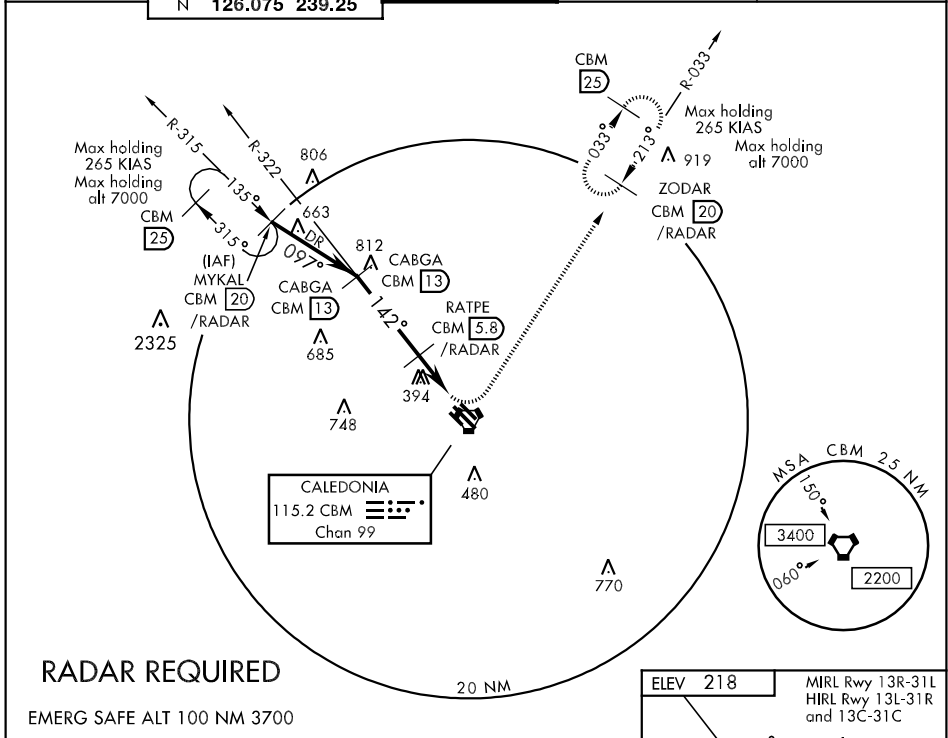


VORTAC CBM <b>115.2</b> Chan <b>99</b>	APCH CRS <b>142°</b>	Rwy Idg <b>8001</b> TDZE <b>195</b> Arpt Elev <b>218</b>	AL-91 [USAF]	COLUMBUS AFB (KCBM)
MISSED APPROACH: Climbing left turn to 4000 direct ZODAR and hold or as directed by ATC.				

ATIS <b>115.2 273.5</b>	COLUMBUS APP CON SE <b>132.025 291.65</b> SW <b>135.6 323.275</b> N <b>126.075 239.25</b>	COLUMBUS TOWER <b>126.65 379.925</b>	GND CON <b>121.9 275.8</b>	CLNC DEL <b>269.55</b>
----------------------------	----------------------------------------------------------------------------------------------------	-----------------------------------------	-------------------------------	---------------------------



CATEGORY	A	B	C	D	E
S-13L	700/50	505 (500-1)	700-1½	505 (500-1½)	700-1¾ 505 (500-1¾)
CIRCLING	840-1	622 (700-1)	840-1¾ 622 (700-1¾)	840-2 622 (700-2)	1300-3 1081 (1100-3)

FAF to MAP 4.3 NM						
	Knots	60	90	120	150	180
	Min:Sec	4:18	2:52	2:09	1:43	1:26

SC-4, 22 OCT 2009 to 19 NOV 2009

SC-4, 22 OCT 2009 to 19 NOV 2009