

COLUMBUS, MISSISSIPPI

VOR/DME or TACAN RWY 13C

VORTAC CBM 115.2 Chan 99	APCH CRS 133°	Rwy Idg 12,004 TDZE 197 Arpt Elev 218
--	-------------------------	--

AL-91 [USAF]

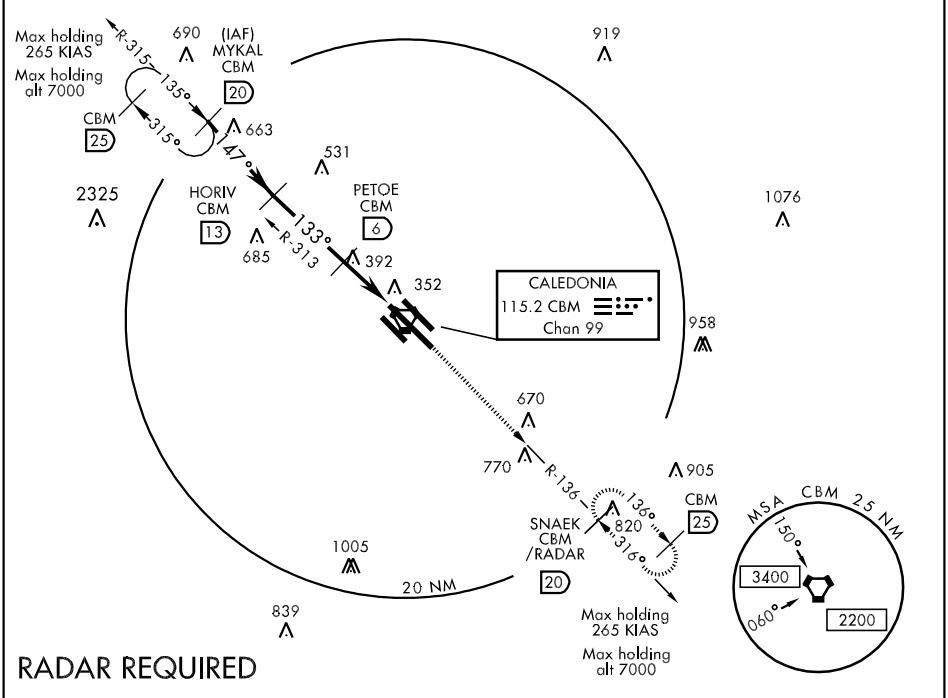
COLUMBUS AFB (KCBM)

▼ *When ALS inop, increase CAT AB RVR to 50 and vis to 1 mile, CAT C vis to 1½ miles, CAT D vis to 1¾ miles, CAT E vis to 2 miles.



MISSED APPROACH: Track heading 135° to intercept the CBM R-136 outbound to SNAEK (CBM R-136/20) and hold. Maintain 4000.

ATIS 115.2 273.5	COLUMBUS APP CON SE 132.025 291.65 SW 135.6 323.275 N 126.075 239.25	COLUMBUS TOWER 126.65 379.925	GND CON 121.9 275.8	CLNC DEL 269.55
----------------------------	--	---	-------------------------------	---------------------------

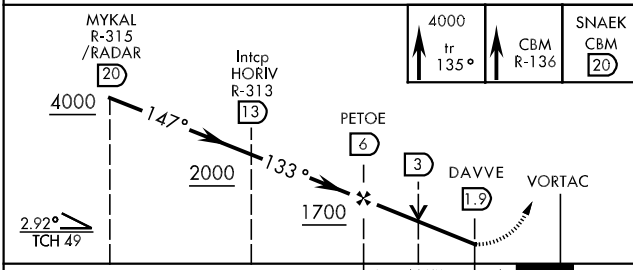


SC-4, 22 OCT 2009 to 19 NOV 2009

SC-4, 22 OCT 2009 to 19 NOV 2009

RADAR REQUIRED

EMERG SAFE ALT 100 NM 3700



CATEGORY	A	B	C	D	E
S-13C *	780/40 583 (600-¾)		780/50 583 (600-1)	780/60 583 (600-1¼)	780-1½ 583 (600-1½)
CIRCLING	840-1 622 (700-1)		840-1¾ 622 (700-1¾)	840-2 622 (700-2)	1300-3 082 (1100-3)

MRL Rwy 13R-31L HIRL Rwy 13L-31R and 13C-31C					
FAF to MAP 4.1 NM					
Knots	60	90	120	150	180 200
Min:Sec	4:06	2:44	2:03	1:38	1:22 1:14

COLUMBUS, MISSISSIPPI
Amdt 5 08269

33° 39' N - 88° 27' W

COLUMBUS AFB (KCBM)

VOR/DME or TACAN RWY 13C