

LOC I-CBM <b>109.3</b>	APCH CRS <b>135°</b>	Rwy Idg TDZE <b>12,004</b> <b>197</b> Arpt Elev <b>218</b>
---------------------------	-------------------------	---

JAL-91 [USAF]

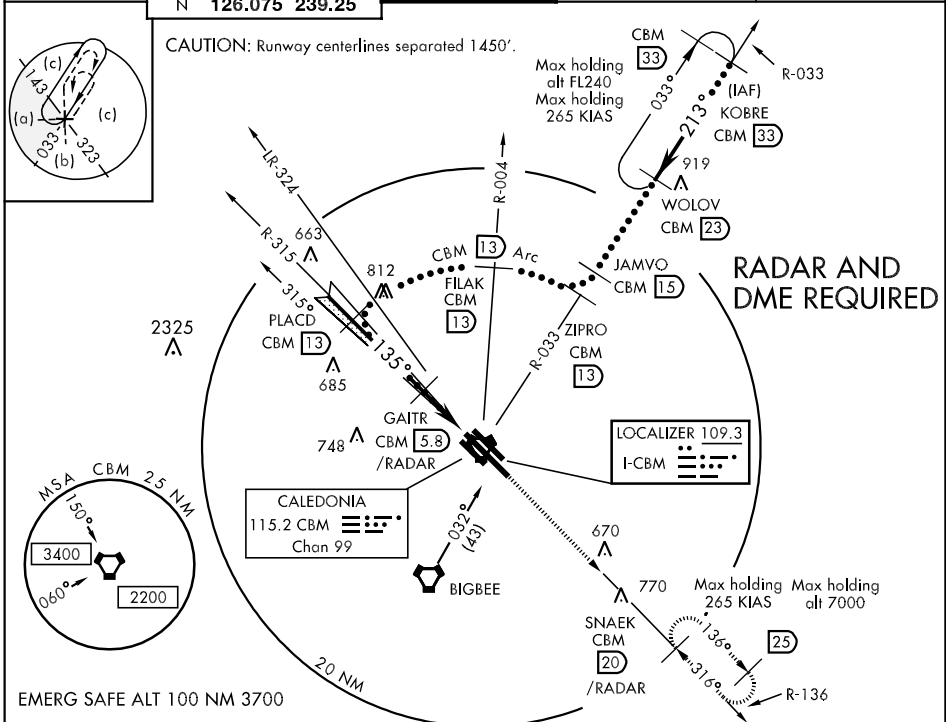
COLUMBUS AFB (KCBM)

▲ \* When ALS inop increase CAT C vis to 1½, CAT D vis to 1¾, CAT E vis to 2 miles.



MISSED APPROACH: Track heading 135° to intercept the CBM R-136 outbound to SNAEK (CBM R-136/20) and hold. Maintain 4000.

ATIS <b>115.2 273.5</b>	COLUMBUS APP CON SE <b>132.025 291.65</b> SW <b>135.6 323.275</b> N <b>126.075 239.25</b>	COLUMBUS TOWER <b>126.65 379.925</b>	GND CON <b>121.9 275.8</b>	CLNC DEL <b>269.55</b>
----------------------------	--	---	-------------------------------	---------------------------



SC-4, 22 OCT 2009 to 19 NOV 2009

SC-4, 22 OCT 2009 to 19 NOV 2009

			ELEV 218												
			<table border="1"> <tr> <td>Knots</td> <td>120</td> <td>140</td> <td>160</td> <td>180</td> <td>200</td> </tr> <tr> <td>Min:Sec</td> <td>2:00</td> <td>1:43</td> <td>1:30</td> <td>1:20</td> <td>1:12</td> </tr> </table>	Knots	120	140	160	180	200	Min:Sec	2:00	1:43	1:30	1:20	1:12
Knots	120	140	160	180	200										
Min:Sec	2:00	1:43	1:30	1:20	1:12										
CATEGORY	C	D	E												
S-ILS 13C		397/40	200 (200-¾)												
S-LOC 13C *	740/50 543 (600-1)	740/60 543 (600-1¼)	740-1½ 543 (600-1½)												
SIDE STEP 13L	740-1½ 545 (600-1½)	740-1¾ 545 (600-1¾)	740-2 545 (600-2)												
CIRCLING	840-1¾ 622 (700-1¾)	840-2 622 (700-2)	1300-3 1082 (1100-3)												