

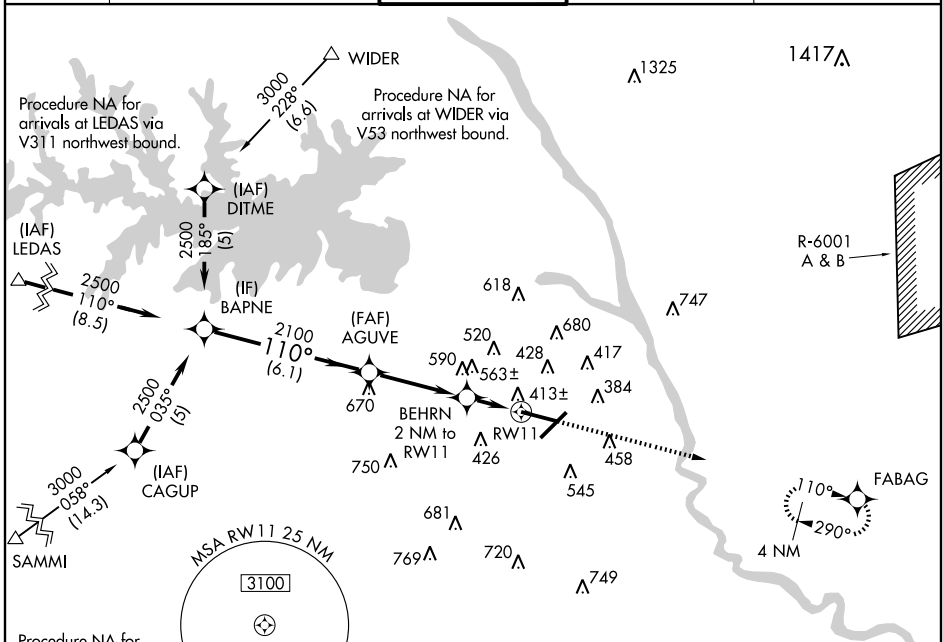
WAAS CH 61014 W11A	APP CRS 110°	Rwy Idg 8601 TDZE 236 Apt Elev 236
--	------------------------	---

RNAV (GPS) RWY 11

COLUMBIA METROPOLITAN (CAE)

For uncompensated Baro-VNAV systems, LNAV/VNAV NA below -1.5°C (5°F) or above 48°C (118°F). DME/DME RNP-0.3 NA.		MISSED APPROACH: Climb to 3000 direct FABAG and hold.

ATIS 120.15	COLUMBIA APP CON 133.4 285.6 (290°-109°) 124.15 338.2 (110°-289°)	COLUMBIA TOWER 119.5 257.8	GND CON 121.9 348.6	CLNC DEL 119.75
-----------------------	---	--------------------------------------	-------------------------------	---------------------------



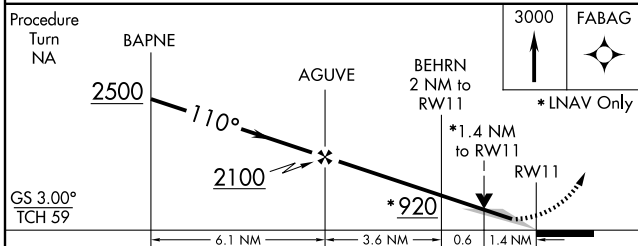
SE-2, 22 OCT 2009 to 19 NOV 2009

SE-2, 22 OCT 2009 to 19 NOV 2009

Procedure NA for arrivals at LEDAS via V311 northwest bound.

Procedure NA for arrivals at WIDER via V53 northwest bound.

Procedure NA for arrivals at SAMMI via V56 westbound.



Procedure Turn NA	BAPNE	AGUVE	BEHRN 2 NM to RW11	FABAG
GS 3.00° TCH 59'	2500	2100	*920	
	6.1 NM	3.6 NM	0.6 NM	1.4 NM
CATEGORY	A	B	C	D
LPV DA		436/24	200 (200-1/2)	
LNAV/VNAV DA		744/60	508 (600-1 1/4)	
LNAV MDA	740/24	504 (600-1/2)	740/50	504 (600-1)
CIRCLING	740-1	504 (600-1)	840-1 3/4 604 (700-1 3/4)	880-2 644 (700-2)

