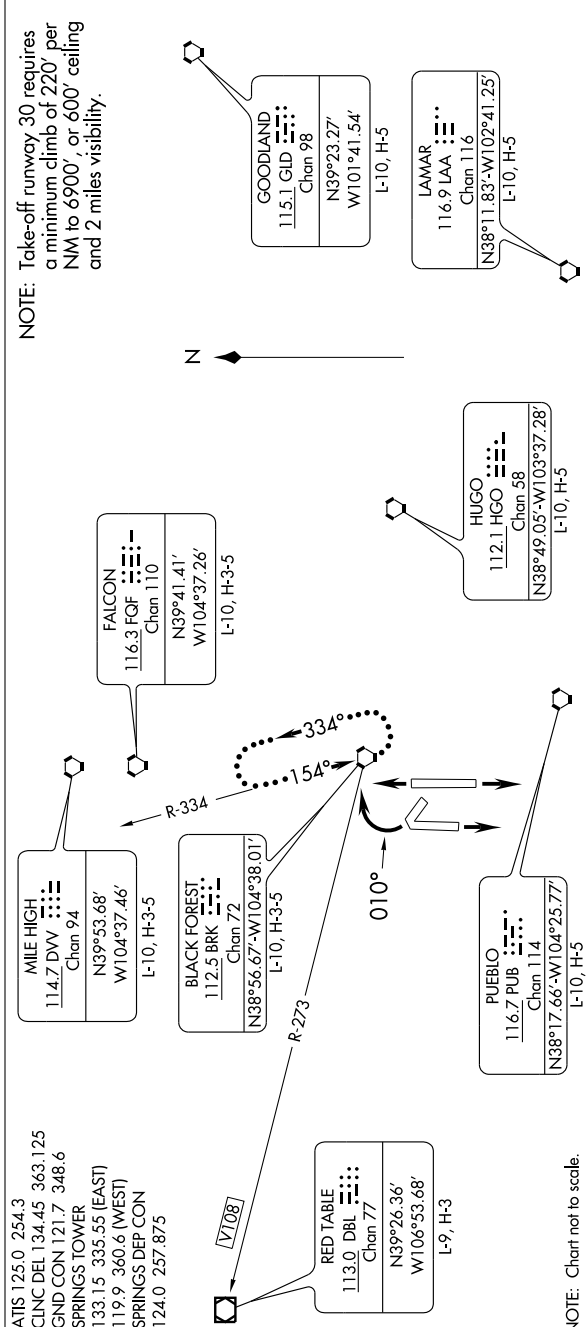


SPRINGS TWO DEPARTURE

SL-87 (FAA)

COLORADO SPRINGS, COLORADO

600Z MON 01 01 600Z TUE 22 '11-WS



DEPARTURE ROUTE DESCRIPTION

TAKE-OFF RUNWAYS 12, 17R/L, 35R/L: Fly runway/assigned heading for radar vectors to filed/assigned route.

Thence

TAKE-OFF RUNWAY 30: Turn right within 2 NM heading 010° or assigned heading for radar vectors to filed/assigned route.

Thence

. Maintain 10,000'. Expect clearance to filed altitude 10 minutes after departure.

LOST COMMUNICATIONS: If not in contact with ATC within 1 minute after departure from runways 12 and 17L/R turn left, from runways 30 and 35L/R turn right. All aircraft climb to filed altitude via direct BRK VORTAC, thence via filed/assigned route. Aircraft filed V108 westbound: continue climb in holding pattern to cross BRK VORTAC at or above 14,000'.

SPRINGS TWO DEPARTURE