

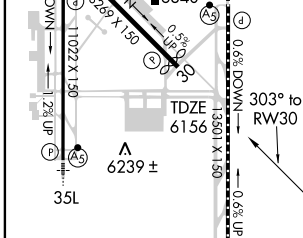
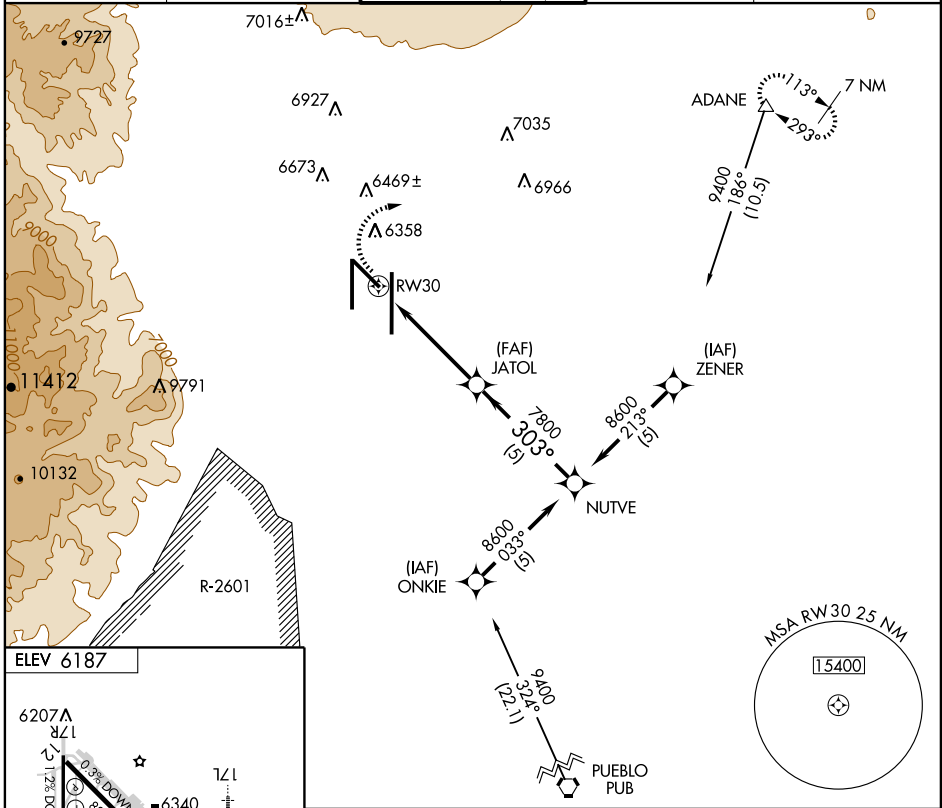
# RNAV (GPS) RWY 30

COLORADO SPRINGS/CITY OF COLORADO SPRINGS MUNI (COS)

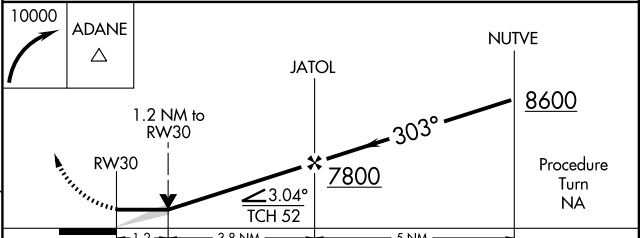
APP CRS <b>303°</b>	Rwy Idg <b>7914</b>
	TDZE <b>6156</b>
	Apt Elev <b>6187</b>

DME/DME RNP-0.3 NA.	MISSED APPROACH: Climbing right turn to 10000 direct ADANE and hold.
---------------------	--

ATIS <b>125.0 254.3</b>	SPRINGS APP CON <b>118.5 239.025</b>	SPRINGS TOWER <b>133.15 335.55 (EAST)</b> <b>119.9 360.6 (WEST)</b>	GND CON <b>121.7 348.6</b>	CLNC DEL <b>134.45 363.125</b>
----------------------------	---	---	-------------------------------	-----------------------------------



MIRL Rwy 12-30
HIRL Rwys 17R-35L and 17L-35R
REIL Rwys 12, 17R, 30 and 35R
TDZ/CL Rwys 17L and 35R



CATEGORY	A	B	C	D
RNAV MDA	6580-1	424 (400-1)	6580-1¼	424 (400-1¼)
CIRCLING	6740-1	553 (600-1)	6740-1½	6800-2
			553 (600-1½)	613 (700-2)

# RNAV (GPS) RWY 30

SW-1, 22 OCT 2009 to 19 NOV 2009

SW-1, 22 OCT 2009 to 19 NOV 2009