

# RNAV (GPS) RWY 17R

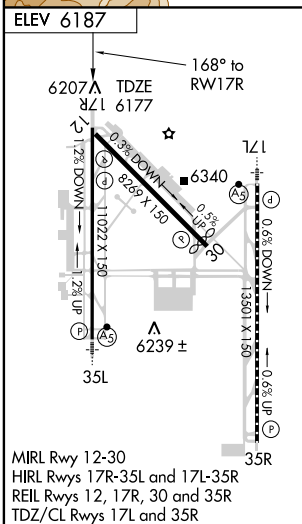
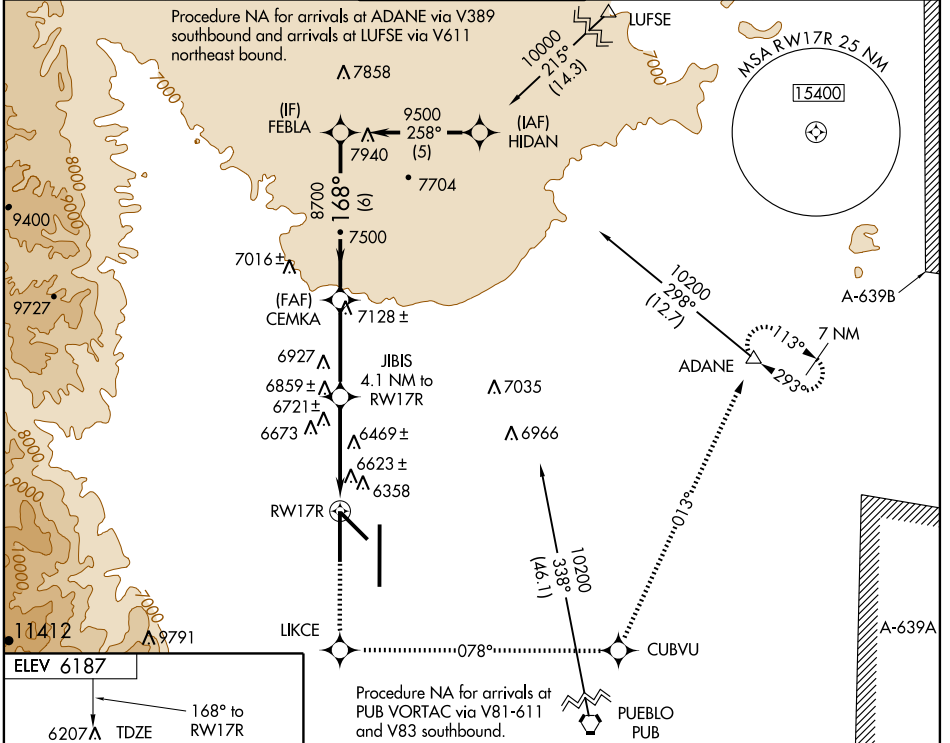
COLORADO SPRINGS/CITY OF COLORADO SPRINGS MUNI (COS)

WAAS CH <b>72800</b> W17A	APP CRS <b>168°</b>	Rwy Idg TDZE <b>6177</b> Apt Elev <b>6187</b>	<b>11022</b>
---------------------------------	------------------------	---	--------------

**⚠** DME/DME RNP-0.3 NA.  
**⚠** For uncompensated Baro-VNAV systems, LNAV/VNAV NA below -27°C (-16°F) or above 37°C (99°F).

**MISSED APPROACH:** Climb to 10200 direct LIKCE and left turn via 078° track to CUBVU and 013° track to ADANE and hold.

ATIS <b>125.0 254.3</b>	SPRINGS APP CON <b>118.5 239.025</b>	SPRINGS TOWER <b>133.15 335.55 (EAST)</b> <b>119.9 360.6 (WEST)</b>	GND CON <b>121.7 348.6</b>	CLNC DEL <b>134.45 363.125</b>
----------------------------	---	---	-------------------------------	-----------------------------------



FEBLA	10200	LIKCE	CUBVU	ADANE
9500	↑	078° track	013° track	△
Procedure Turn NA	JIBIS 4.1 NM to RWY17R	*2.3 NM to RWY17R	*LNAV only	
GS 3.00°	8700	*7540	RWY17R	
TCH 59	6 NM	3.5 NM	1.8	2.3
CATEGORY	A	B	C	D
LPV DA	6537-1¼ 360 (400-1¼)			
LNAV/VNAV DA	6742-2 565 (600-2)			
LNAV MDA	6980-1 803 (800-1)	6980-1¼ 803 (800-1¼)	6980-2¼ 803 (800-2¼)	6980-2½ 803 (800-2½)
CIRCLING	6980-1 793 (800-1)	6980-1¼ 793 (800-1¼)	6980-2¼ 793 (800-2¼)	6980-2½ 793 (800-2½)

# RNAV (GPS) RWY 17R

SW-1, 22 OCT 2009 to 19 NOV 2009

SW-1, 22 OCT 2009 to 19 NOV 2009