

RNAV (GPS) RWY 17L

COLORADO SPRINGS/CITY OF COLORADO SPRINGS MUNI (COS)

APP CRS 168°	Rwy Idg 13501 TDZE 6187 Apt Elev 6187
------------------------	--

DME/DME RNP-0.3 NA.	MALSR 	MISSED APPROACH: Climbing left turn to 10000 direct ADANE and hold.
---------------------	-----------	---

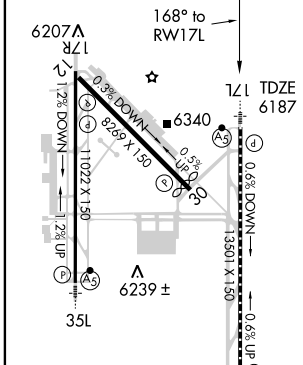
ATIS 125.0 254.3	SPRINGS APP CON 118.5 239.025	SPRINGS TOWER 133.15 335.55 (EAST) 119.9 360.6 (WEST)	GND CON 121.7 348.6	CLNC DEL 134.45 363.125
----------------------------	---	---	-------------------------------	-----------------------------------



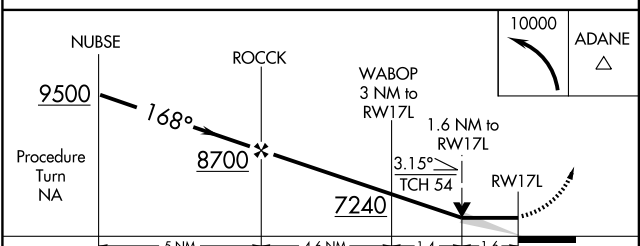
SW-1, 22 OCT 2009 to 19 NOV 2009

SW-1, 22 OCT 2009 to 19 NOV 2009

ELEV 6187



MIRL Rwy 12-30
HIRL Rwys 17R-35L and 17L-35R
REIL Rwys 12, 17R, 30 and 35R
TDZ/CL Rwys 17L and 35R



CATEGORY	A	B	C	D
LNNAV MDA	6740/24	553 (600-1/2)	6740/50 553 (600-1)	6740/60 553 (600-1 1/4)
CIRCLING	6740-1	556 (600-1)	6740-1 1/2 556 (600-1 1/2)	6800-2 613 (700-2)

RNAV (GPS) RWY 17L