

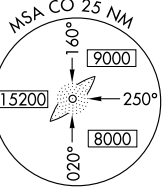
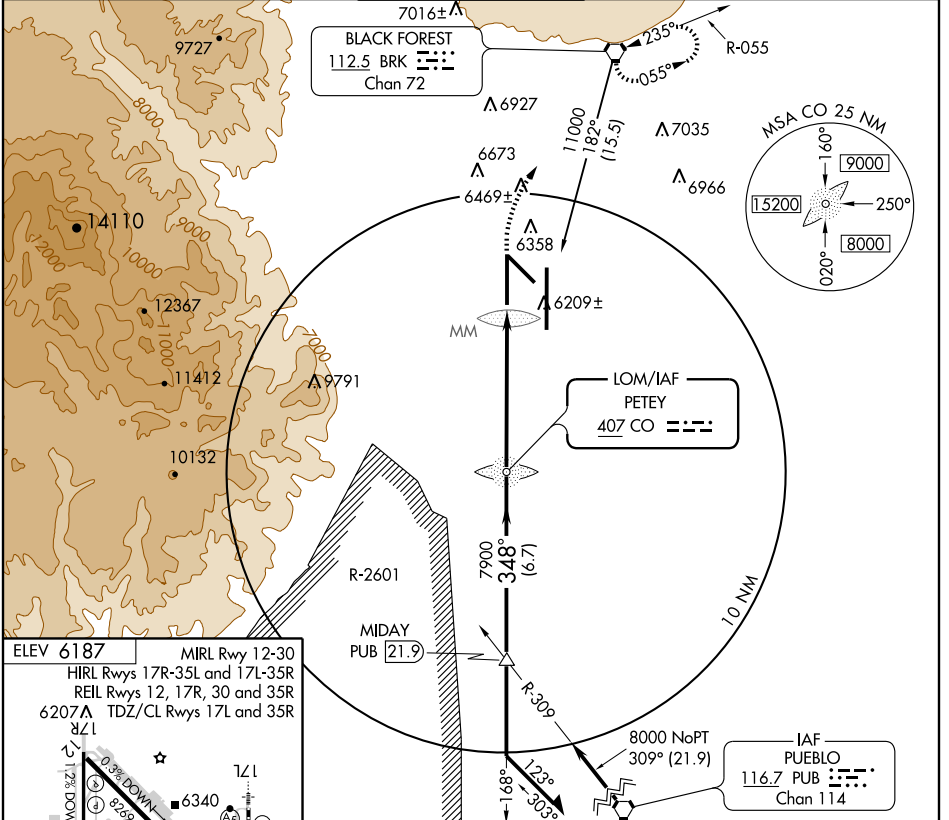
NDB RWY 35L

COLORADO SPRINGS/CITY OF COLORADO SPRINGS MUNI (COS)

LOM CO 407	APP CRS 348°	Rwy Idg TDZE Apt Elev	11022 6075 6187
----------------------	------------------------	-----------------------------	--

<p>Radar monitoring required when R-2601 in use.</p>	<p>MALSR</p>	<p>MISSED APPROACH: Climb to 8000, then climbing right turn to 9000 direct BRK VORTAC and hold.</p>
	<p>VORTAC</p>	

ATIS 125.0 254.3	SPRINGS APP CON 118.5 239.025	SPRINGS TOWER 133.15 335.55 (EAST) 119.9 360.6 (WEST)	GND CON 121.7 348.6	CLNC DEL 134.45 363.125
----------------------------	---	---	-------------------------------	-----------------------------------



ELEV 6187

MIRL Rwy 12-30

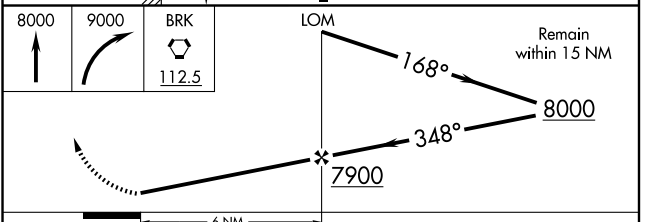
HIRL Rwys 17R-35L and 17L-35R

REIL Rwys 12, 17R, 30 and 35R

6207△ TDZ/CL Rwys 17L and 35R

TDZE 6075 35L

348° 6 NM from FAF



FAF to MAP 6 NM

Knots	60	90	120	150	180
Min:Sec	6:00	4:00	3:00	2:24	2:00

CATEGORY	A	B	C	D	E
S-35L	6520/40 445 (400-¾)			6520/60 445 (400-1¼)	
CIRCLING	6740-1 553 (600-1)	6760-1 573 (600-1)	6760-1½ 573 (600-1½)	6840-2 653 (700-2)	7140-3 953 (1000-3)

NDB RWY 35L

SW-1, 22 OCT 2009 to 19 NOV 2009

SW-1, 22 OCT 2009 to 19 NOV 2009