


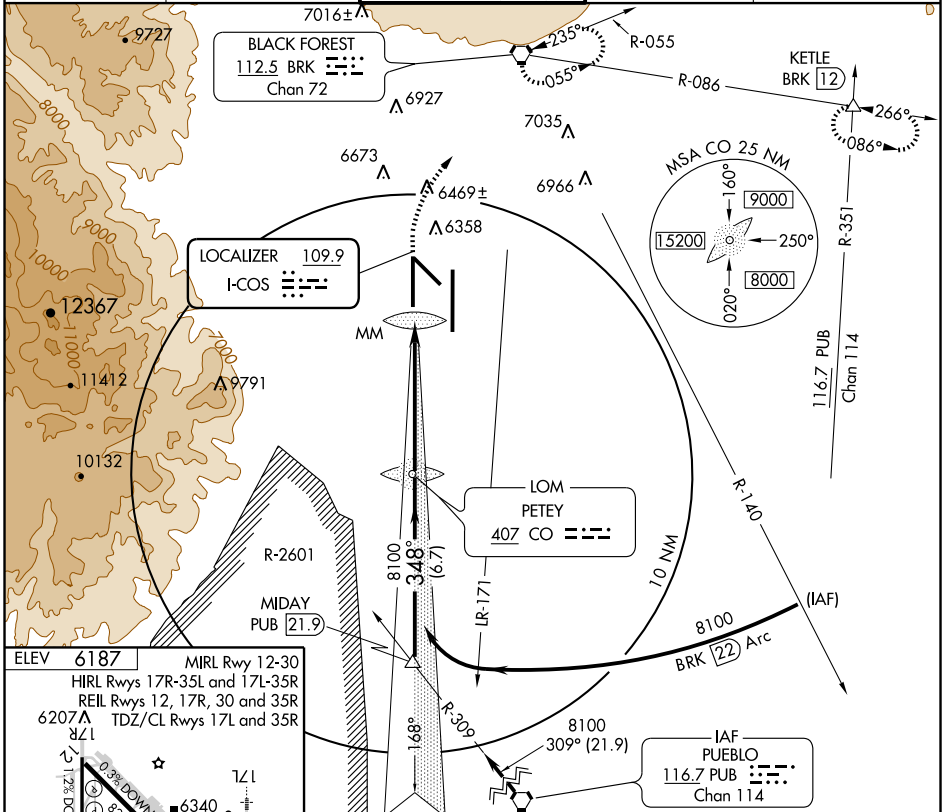
ILS or LOC RWY 35L

COLORADO SPRINGS/CITY OF COLORADO SPRINGS MUNI (COS)

LOC I-COS 109.9	APP CRS 348°	Rwy Idg TDZE Apt Elev	11022 6075 6187
---------------------------	------------------------	-----------------------------	--

<p>⚠ Radar monitoring required when R-2601 in use. ⚠ Cat D S-LOC 35L visibility increased to RVR 5000 for inoperative ALSF. *RVR 1800 authorized with the use of FD or AP or HUD to DA.</p>	<p>MALSR </p>	<p>MISSED APPROACH: Climb to 8000, then climbing right turn to 9000 direct BRK VORTAC and hold. (TACAN only aircraft continue to KETLE 12 DME and hold E, LT, 266° inbound.)</p>
--	---	--

<p>ATIS 125.0 254.3</p>	<p>SPRINGS APP CON 118.5 239.025</p>	<p>SPRINGS TOWER 133.15 335.55 (EAST) 119.9 360.6 (WEST)</p>	<p>GND CON 121.7 348.6</p>	<p>CLNC DEL 134.45 363.125</p>
------------------------------------	---	--	---------------------------------------	---



FAF to MAP 5.4 NM	Knots: 60, 90, 120, 150, 180			
	Min:Sec: 5:24, 3:36, 2:42, 2:10, 1:48			
CATEGORY	A	B	C	D
S-ILS 35L	*6275/24			200 (100-1/2)
S-LOC 35L	6340/24			265 (200-1/2)
				6340/40 265 (200-3/4)
CIRCLING	6740-1 553 (600-1)	6760-1 573 (600-1)	6760-1 1/2 573 (600-1 1/2)	6840-2 653 (700-2)

ILS or LOC RWY 35L

SW-1, 22 OCT 2009 to 19 NOV 2009

SW-1, 22 OCT 2009 to 19 NOV 2009