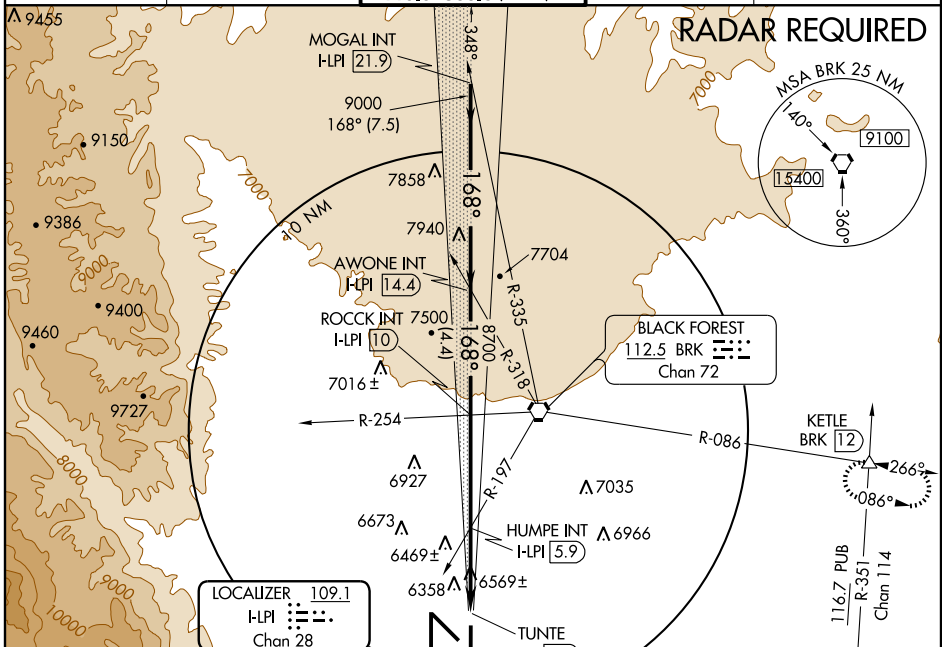


# ILS or LOC RWY 17L

LOC/DME I-LPI <b>109.1</b> Chan 28	APP CRS <b>168°</b>	Rwy Idg TDZE Apt Elev	<b>13501</b> <b>6187</b> <b>6187</b>
--	------------------------	-----------------------------	--

COLORADO SPRINGS/CITY OF COLORADO SPRINGS MUNI (COS)

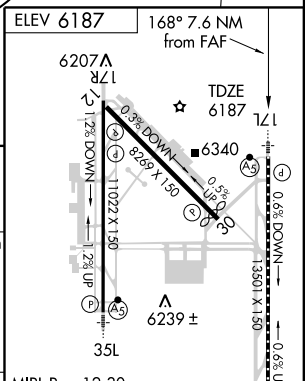
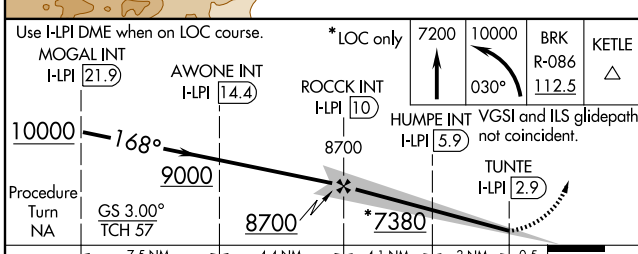
	MALSR	MISSED APPROACH: Climb to 7200, then climbing left turn to 10000 via heading 030° and BRK VORTAC R-086 to KETLE Int and hold.		
	ATIS <b>125.0 254.3</b>	SPRINGS APP CON <b>118.5 239.025</b>	SPRINGS TOWER <b>133.15 335.55 (EAST)</b> <b>119.9 360.6 (WEST)</b>	GND CON <b>121.7 348.6</b>



SW-1, 22 OCT 2009 to 19 NOV 2009

SW-1, 22 OCT 2009 to 19 NOV 2009

Use I-LPI DME when on LOC course.	MOGAL INT I-LPI 21.9	AWONE INT I-LPI 14.4	ROCCK INT I-LPI 10	HUMPE INT I-LPI 5.9	TUNTE I-LPI 2.9
-----------------------------------	----------------------	----------------------	--------------------	---------------------	-----------------



CATEGORY	A	B	C	D
S-ILS 17L	6387/18 200 (200-½)			
S-LOC 17L	6820/24 633 (700-½)	6820/60 633 (700-1¼)	6820-1½ 633 (700-1½)	
CIRCLING	6820-1 633 (700-1)	6820-1¾ 633 (700-1¾)	6840-2 653 (700-2)	

MIRL Rwy 12-30	HIRL Rws 17R-35L and 17L-35R	REL Rws 12, 17R, 30 and 35R	TDZ/CL Rws 17L and 35R
FAF to MAP 7.1 NM			
Knots	60	90	120 150 180
Min:Sec	7:06	4:44	3:33 2:50 2:22