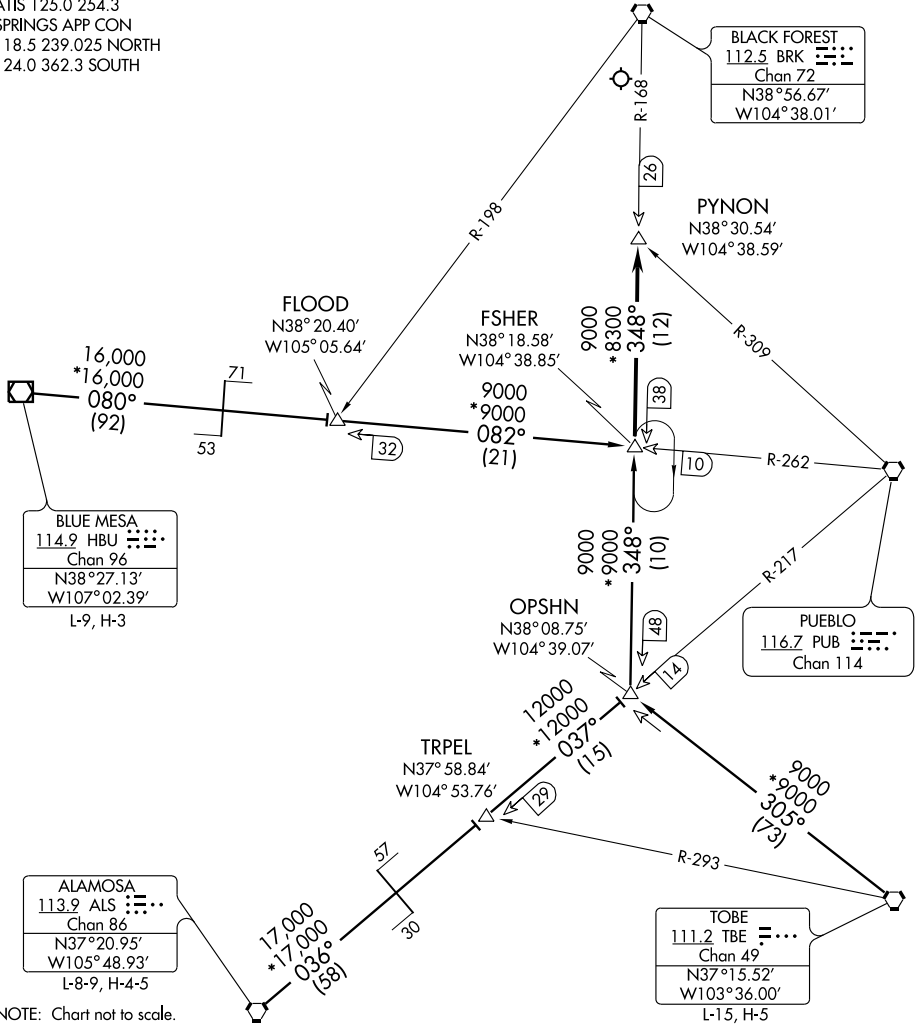


DEBERRY ONE ARRIVAL

ST-87 (FAA)

CITY OF COLORADO SPRINGS MUNI
COLORADO SPRINGS, COLORADO

ATIS 125.0 254.3
SPRINGS APP CON
118.5 239.025 NORTH
124.0 362.3 SOUTH



SW-1, 22 OCT 2009 to 19 NOV 2009

SW-1, 22 OCT 2009 to 19 NOV 2009

NOTE: Chart not to scale.

ALAMOSA TRANSITION (ALS.DBRY1): From over ALS VORTAC via ALS R-036 and PUB R-217 to OPSHN INT, then via BRK R-168 to FSHER INT. Thence. . .

BLUE MESA TRANSITION (HBU.DBRY1): From over HBU VOR/DME via HBU R-080 and PUB R-262 to FSHER INT. Thence. . .

TOBE TRANSITION (TBE.DBRY1): From over TBE VORTAC via TBE R-305 and BRK R-168 to FSHER INT. Thence. . .

. . . From over FSHER INT via the BRK R-168 to PYNON INT. Expect radar vectors to the final approach course at or before PYNON INT.

LOST COMMUNICATIONS: Proceed to BRK VORTAC.

DEBERRY ONE ARRIVAL