

GPS RWY 21

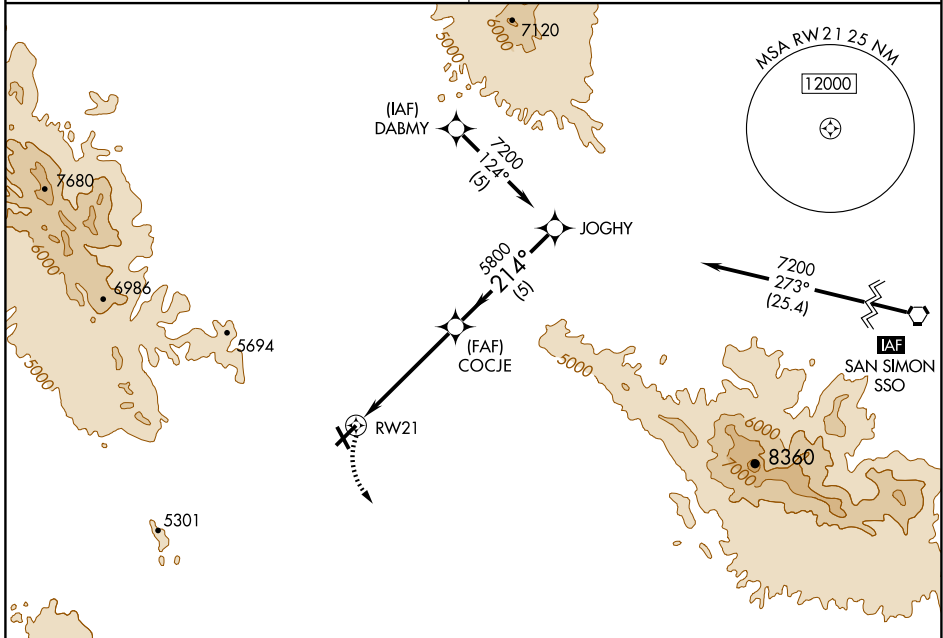
WILLCOX/COCHISE COUNTY (P33)

APP CRS 214°	Rwy Idg 6095
	TDZE 4186
	Apt Elev 4186

Obtain local altimeter on CTAF, when not available procedure not authorized.
IAE ARM APPROACH MODE PRIOR TO IAF.
 MISSED APPROACH: Climbing left turn to 7000 direct CIE VORTAC and hold.

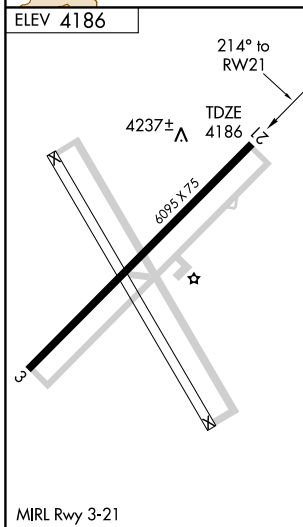
ALBUQUERQUE CENTER
134.45 327.15

UNICOM
122.8 (CTAF)



SW-4, 22 OCT 2009 to 19 NOV 2009

SW-4, 22 OCT 2009 to 19 NOV 2009



WILLCOX, ARIZONA
Orig 09015

 7000	 COCJE			 JOGHY
	 RW21		 5800	 7200
 214°		 Procedure Turn NA		
5 NM		5 NM		
CATEGORY	A	B	C	D
S-21	4540-1	354 (400-1)	NA	
CIRCLING	4640-1	454 (500-1)	NA	

32°15'N-109°54'W

WILLCOX/COCHISE COUNTY (P33)
GPS RWY 21