

(KEATN.KEATN4) 09183

KEATN FOUR ARRIVAL

ST-84 (FAA)

CLEVELAND, OHIO

BURKE LAKEFRONT ATIS
125.25
CLEVELAND HOPKINS ATIS
127.85
CLEVELAND APP CON
6L/6R 124.0 354.025
24L/24R 126.55 354.025

WILLOUGHBY
LOST NATION
MUNI

CONCORD
AIRPARK

DRYER
113.6 DJB
Chan 83

CUYAHOGA
COUNTY

BURKE
LAKEFRONT

GEAUGA
COUNTY

LORAIN
COUNTY
RGNL

CLEVELAND
HOPKINS
INTL

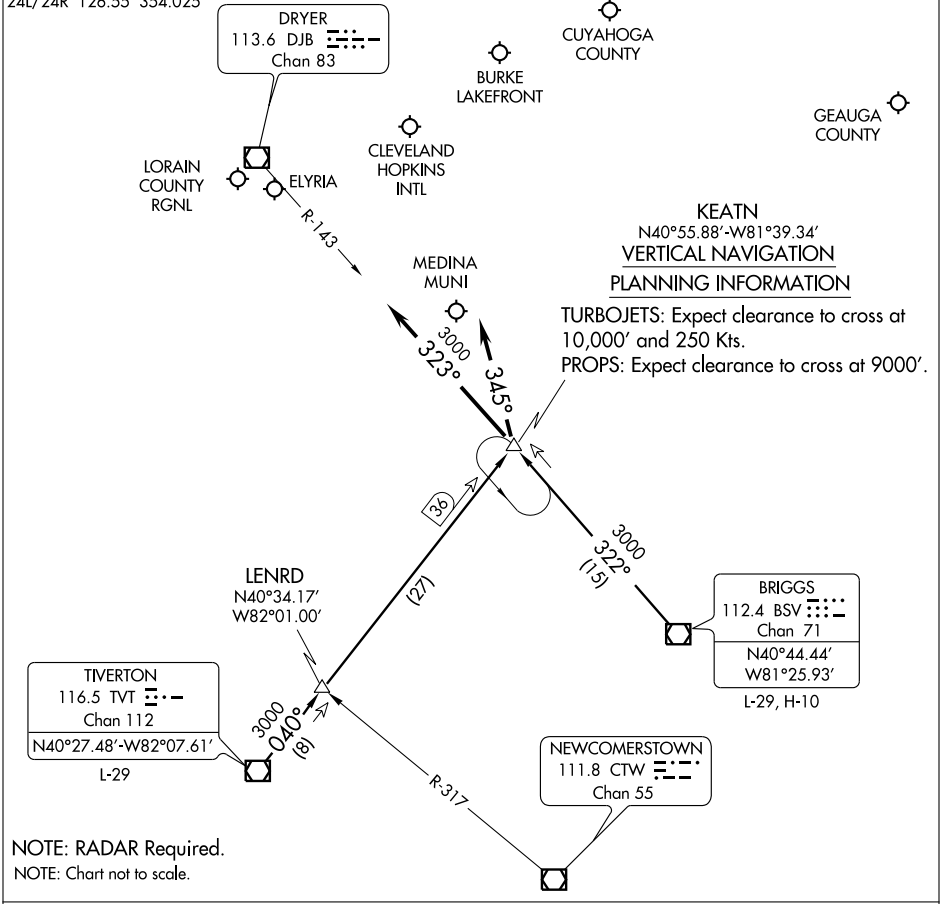
KEATN
N40°55.88'-W81°39.34'
VERTICAL NAVIGATION
PLANNING INFORMATION

TURBOJETS: Expect clearance to cross at 10,000' and 250 Kts.
PROPS: Expect clearance to cross at 9000'.

MEDINA
MUNI

EC-2, 22 OCT 2009 to 19 NOV 2009

EC-2, 22 OCT 2009 to 19 NOV 2009



NOTE: RADAR Required.
NOTE: Chart not to scale.

ARRIVAL ROUTE DESCRIPTION

- BRIGGS TRANSITION (BSV.KEATN4): From over BSV VOR/DME via BSV R-322 to KEATN INT.
Thence. . .
- TIVERTON TRANSITION (TVT.KEATN4): From over TVT VOR/DME via TVT R-040 to KEATN INT.
Thence. . .
- LANDING CLE RWY 24L/R: . . . Depart KEATN INT heading 345°. Expect radar vectors to final approach course.
- LANDING CLE RWY 6L/R: . . . Depart KEATN INT via DJB R-143 to DJB VOR/DME. Expect radar vectors to final approach course.
- LANDING ALL OTHER AIRPORTS: . . . From KEATN INT expect radar vectors to final approach course.

KEATN FOUR ARRIVAL

CLEVELAND, OHIO

(KEATN.KEATN4) 09183