

WAAS CH 86701 W25A	APP CRS 246°	Rwy Idg TDZE 478 Apt Elev 483	5128 478 483
--	------------------------	---	---

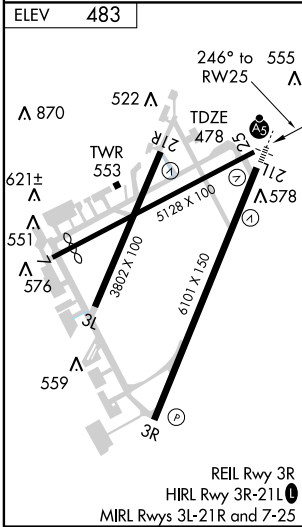
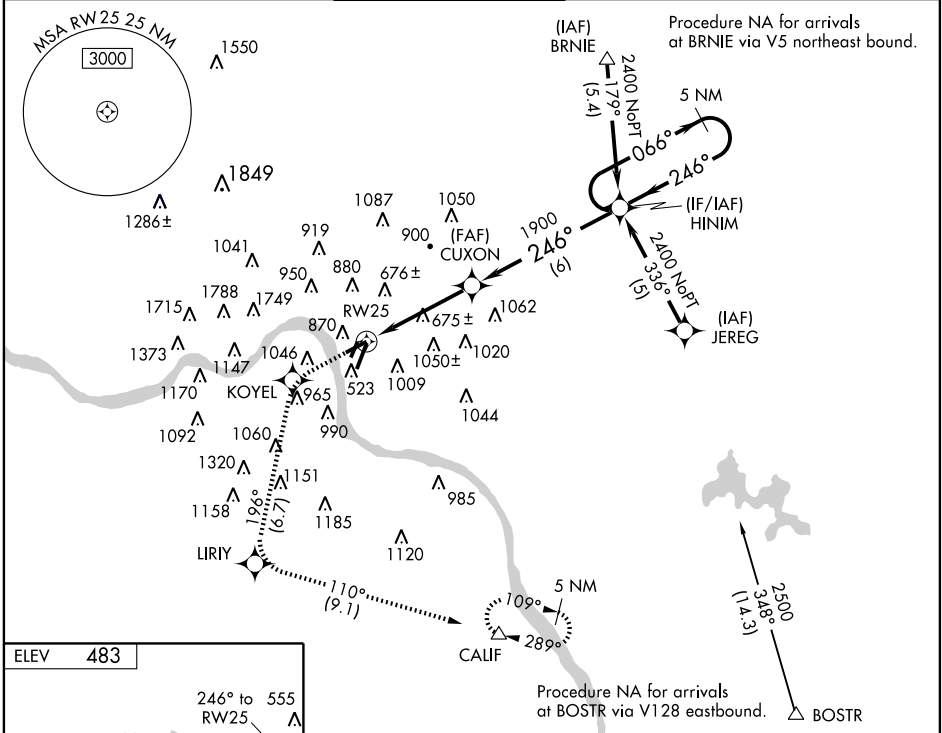
RNAV (GPS) RWY 25

CINCINNATI MUNI AIRPORT-LUNKEN FIELD (LUK)

▼ DME/DME RNP-0.3 NA. If local altimeter setting not received, use Cincinnati/Northern Kentucky Intl altimeter setting and increase all DAs/MDAs 100 feet. Visibility reduction by helicopter NA.

▲ MISSED APPROACH: Climb to 2600 direct KOYEL and left turn via 196° track to LIRIY, and via 110° track to CALIF and hold.

ATIS 120.25	CINCINNATI APP CON 121.0 257.725	LUNKEN TOWER ★ 118.7 (CTAF) 0 257.8	GND CON 121.9	CLNC DEL 121.9	UNICOM 122.95
-----------------------	--	---	-------------------------	--------------------------	-------------------------



2600	KOYEL	LIRIY	CALIF	HINIM	5 NM Holding Pattern
↑	◆	◆	△		
VGSI and RNAV glidepath not coincident.		CUXON		066° → 2400	
		RW25		← 246°	
		1900		GS 3.00° TCH 45	
		4.3 NM		6 NM	
CATEGORY	A	B	C	D	
LPV DA	875-1½ 397 (400-1½)				
LNAV/VNAV DA	NA				
LNAV MDA	1160-1	682 (700-1)	1160-2	682 (700-2)	1160-2½
					682 (700-2½)
CIRCLING	1300-1	1360-1¼	1360-2½	1360-2¾	1360-2¾
	817 (900-1)	877 (900-1¼)	877 (900-2½)	877 (900-2¾)	877 (900-2¾)

EC-2, 22 OCT 2009 to 19 NOV 2009

EC-2, 22 OCT 2009 to 19 NOV 2009