

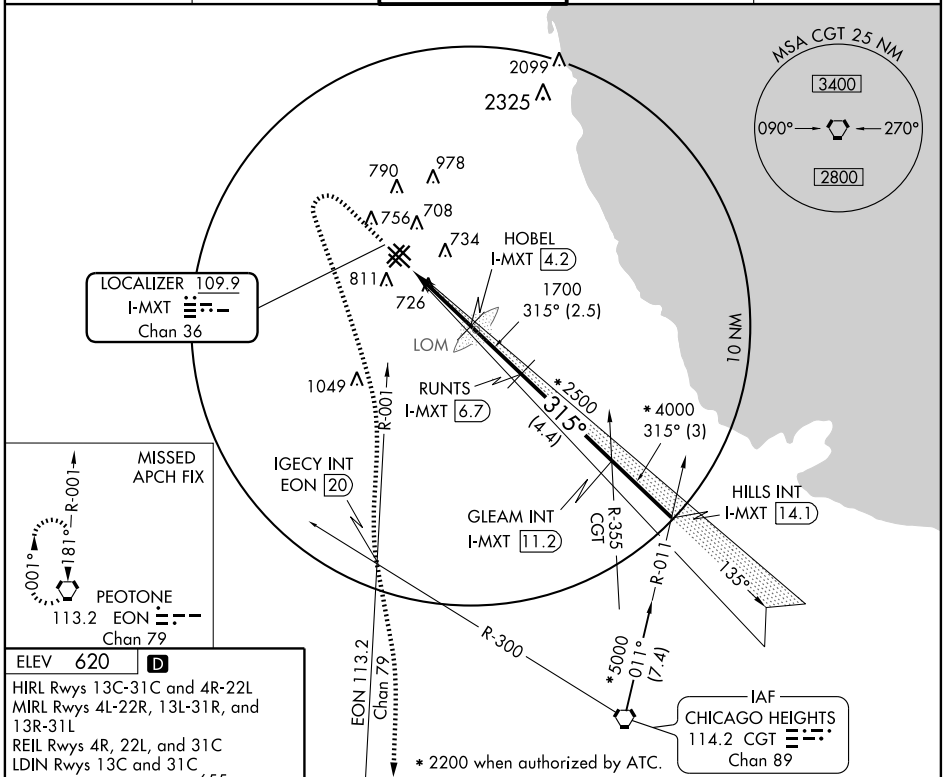
LOC/DME I-MXT 109.9 Chan 36	APP CRS 315°	Rwy Idg TDZE Apt Elev	5826 613 620
--	------------------------	-----------------------------	---

ILS or LOC/DME RWY 31C

CHICAGO MIDWAY INTL (MDW)

▽ MISSED APPROACH: Climb to 1100 then climbing left turn to 2100 via heading 150° and EON VORTAC R-001 until crossing IGENCY Int, then climb to 2600 to EON VORTAC and hold.

ATIS 132.75	CHICAGO APP CON 118.4 388.0	MIDWAY TOWER 118.7 226.3	GND CON 121.65	CLNC DEL 121.85
-----------------------	---------------------------------------	------------------------------------	--------------------------	---------------------------



EC-3, 22 OCT 2009 to 19 NOV 2009

EC-3, 22 OCT 2009 to 19 NOV 2009

ELEV 620 **D**

HIRL Rwy 13C-31C and 4R-22L
MIRL Rwy 4L-22R, 13L-31R, and 13R-31L
REIL Rwy 4R, 22L, and 31C
LDIN Rwy 13C and 31C

Diagram showing runway layout with various altitudes and distances. Key altitudes include 672±, 655, 675±, 725±, 738, 663±, 661±, 689±, 750, 644±, 646±, 648±, 650, 652±, 654±, 656±, 658±, 660±, 662±, 664±, 666±, 668±, 670±, 672±, 674±, 676±, 678±, 680±, 682±, 684±, 686±, 688±, 690±, 692±, 694±, 696±, 698±, 700±, 702±, 704±, 706±, 708±, 710±, 712±, 714±, 716±, 718±, 720±, 722±, 724±, 726±, 728±, 730±, 732±, 734±, 736±, 738±, 740±, 742±, 744±, 746±, 748±, 750±.

315° 3.2 NM from FAF TDZE 613

1100	2100	2600	EON	Procedure Turn NA	HILLS INT
↑	HDG 150° EON R-001 113.2	↑	113.2	HOBEL I-MXT (4.2)	RUNTS I-MXT (6.7)
				GLEAM INT I-MXT (11.2)	HILLS INT I-MXT (14.1)
				*2500	*4000
				*2200 when authorized by ATC	*5000
				3.2 NM	2.5 NM
				4.4 NM	3 NM
CATEGORY	A	B	C	D	
S-ILS 31C	863/40 250 (300-¾)				
S-LOC 31C	1020/50	407 (400-1)	1020/60	407 (400-1¼)	
CIRCLING	1120-1	500 (500-1)	1120-1½	560 (500-1½)	1180-2
				560 (600-2)	