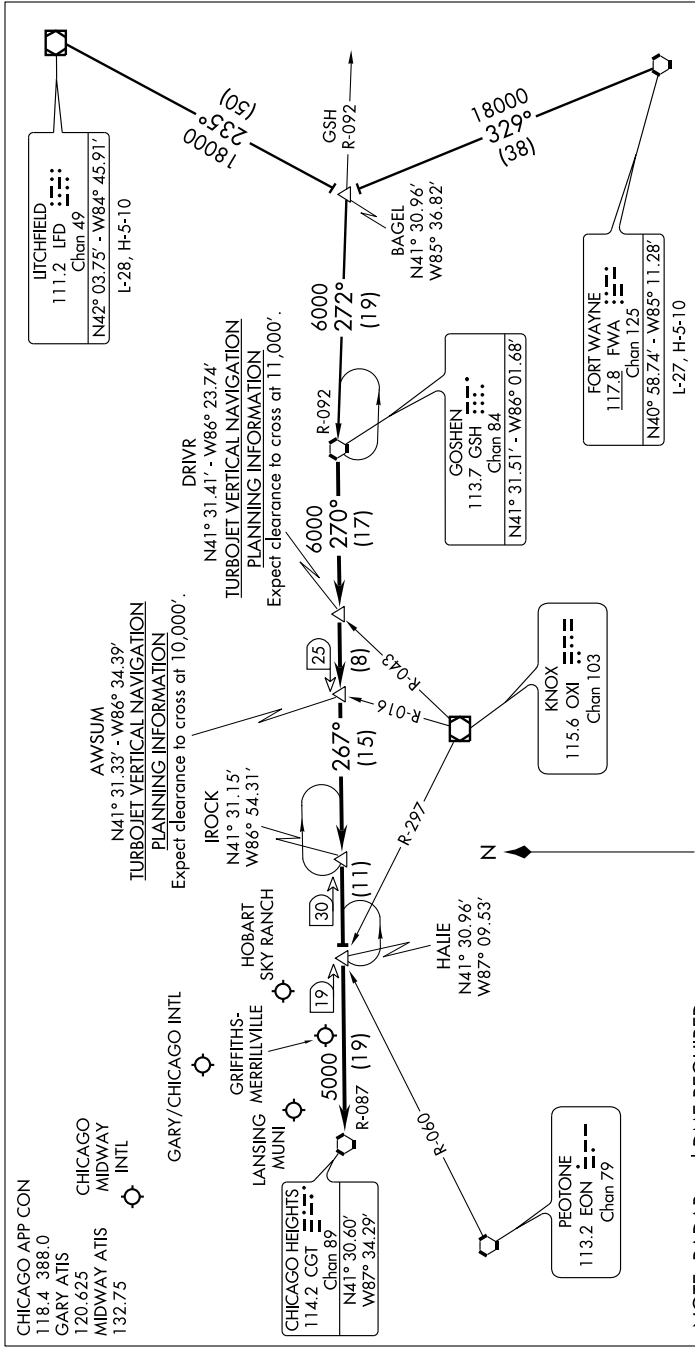


EC-3, 22 OCT 2009 to 19 NOV 2009



NOTE: RADAR and DME REQUIRED.

FORT WAYNE TRANSITION (FWA.GSH4): From over FWA VORTAC via FWA R-329 to BAGEL INT then via GSH R-092 to GSH VORTAC. Thence....

LITCHFIELD TRANSITION (LFD.GSH4): From over LFD VOR/DME via LFD R-235 to BAGEL INT then via GSH R-092 to GSH VORTAC. Thence....

.... From over GSH VORTAC via GSH R-270 to DRVR INT, then via GSH R-270 to AWSUM INT/GSH 25 DME, then via CGT R-087 to IROCK/CGT 30 DME, then via CGT R-087 to HALIE INT/CGT 19 DME, then via CGT R-087 to CGT VORTAC. Expect radar vectors to final approach course.

NOTE: Chart not to scale.