

CHEYENNE, WYOMING

AL-80 (FAA)

VORTAC CYS 113.1 Chan 78	APP CRS 196°	Rwy Idg TDZE Apt Elev N/A N/A 6156
---------------------------------------	------------------------	--

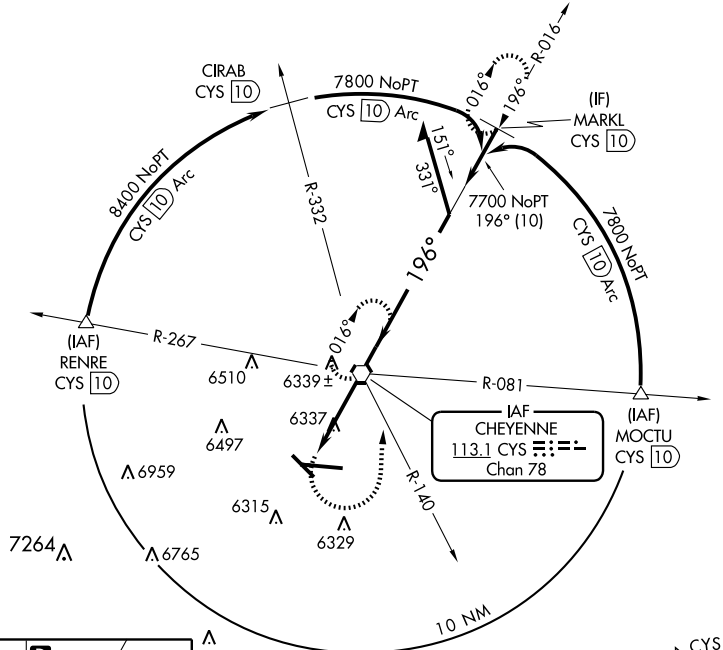
VOR or TACAN-A

CHEYENNE RGNL/JERRY OLSON FIELD (CYS)

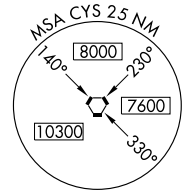
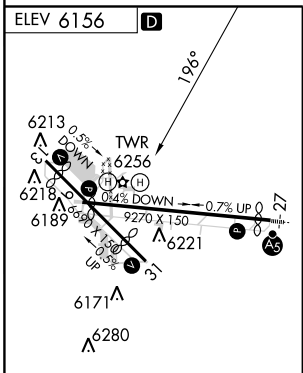
ASR/PAR MISSED APPROACH: Climbing left turn to 8000 via heading 350° and CYS VORTAC R-140 to CYS VORTAC and hold, continue climb-in-hold to 8000 (TACAN aircraft continue via CYS R-016 to MARKL/10 DME and hold N, RT, 196° inbound.)

ATIS 134.425 278.3	CHEYENNE APP CON 124.55 263.075	CHEYENNE TOWER * 118.7 (CTAF) 0 257.8	GND CON 121.9 254.275	UNICOM 122.95
------------------------------	---	---	---------------------------------	-------------------------

NW-1, 22 OCT 2009 to 19 NOV 2009



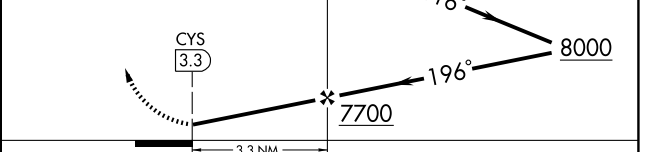
NW-1, 22 OCT 2009 to 19 NOV 2009



REIL Rwy 9, 13 and 31
HIRL Rwy 9-27
MIRL Rwy 13-31

FAF to MAP 3.3 NM					
Knots	60	90	120	150	180
Min:Sec	3:18	2:12	1:39	1:19	1:06

8000	CYS R-140	CYS
350°	113.1	113.1



CATEGORY	A	B	C	D
CIRCLING	6660-1	504 (600-1)	6660-1½ 504 (600-1½)	6720-2 564 (600-2)

CHEYENNE, WYOMING
Amdt 10A 09015

CHEYENNE RGNL/JERRY OLSON FIELD (CYS)
41°09'N - 104°49'W
VOR or TACAN-A