

RNAV (GPS) RWY 9

CHEYENNE RGNL/JERRY OLSON FIELD (CYS)

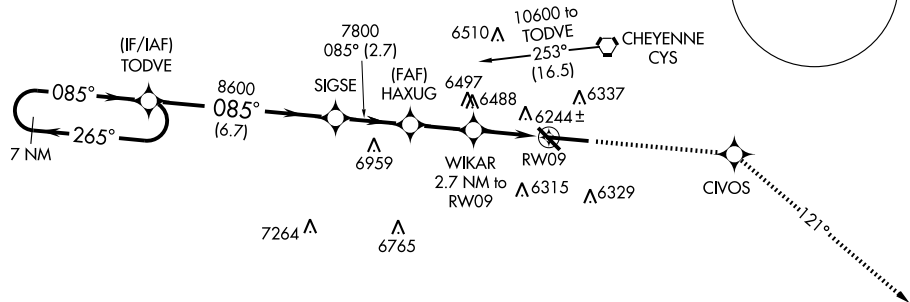
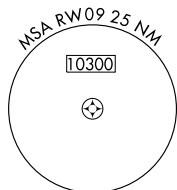
WAAS CH 73009 W09A	APP CRS 085°	Rwy Idg TDZE 6143 Apt Elev 6159	7985
--	------------------------	---	-------------

⚠ For uncompensated Baro-VNAV systems, LNAV/VNAV NA below -27°C (-16°F) or above 36°C (96°F).
⚠ DME/DME RNP -0.3 NA. Visibility reduction by helicopters NA.
 ASR/PAR When local altimeter setting not received, use Laramie altimeter setting and increase all DA 251 feet, all MDA 260 feet, and all visibilities 3/4 mile. VDP and Baro-VNAV NA when using Laramie altimeter setting.

MISSED APPROACH: Climb to 8500 direct CIVOS and via 121° track to HAMER and hold.

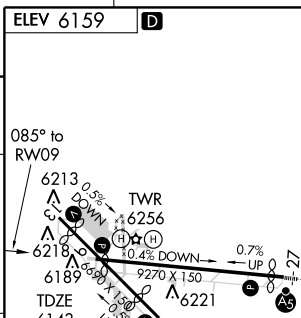
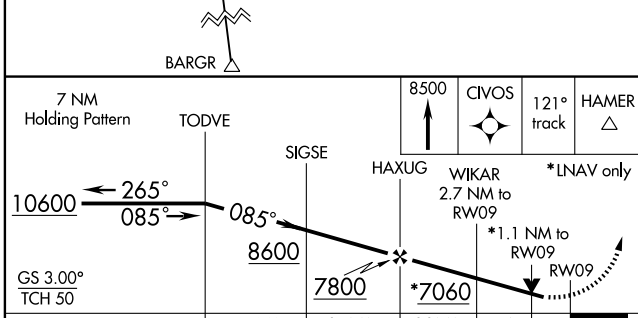
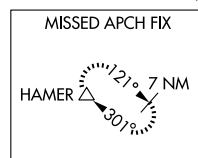
ATIS 134.425 278.3	CHEYENNE APP CON 124.55 263.075	CHEYENNE TOWER * 118.7(CTAF) 0 257.8	GND CON 121.9 254.275	UNICOM 122.95
------------------------------	---	--	---------------------------------	-------------------------

Procedure NA for arrivals at CYS VORTAC via airway radials 267 CW 292, and for arrivals at BARGR via V4 southeastbound.



NW-1, 22 OCT 2009 to 19 NOV 2009

NW-1, 22 OCT 2009 to 19 NOV 2009



CATEGORY	A	B	C	D
LPV DA		6473-1¼	330 (400-1¼)	
LNAV/VNAV DA		6542-1½	399 (400-1½)	
LNAV MDA		6540-1	397 (400-1)	6540-1¼ 397 (400-1¼)
CIRCLING	6660-1	501 (600-1)	6660-1½ 501 (600-1½)	6720-2 561 (600-2)

REIL Rwy 9, 13, and 31
 HIRL Rwy 9-27
 MIRL Rwy 13-31