

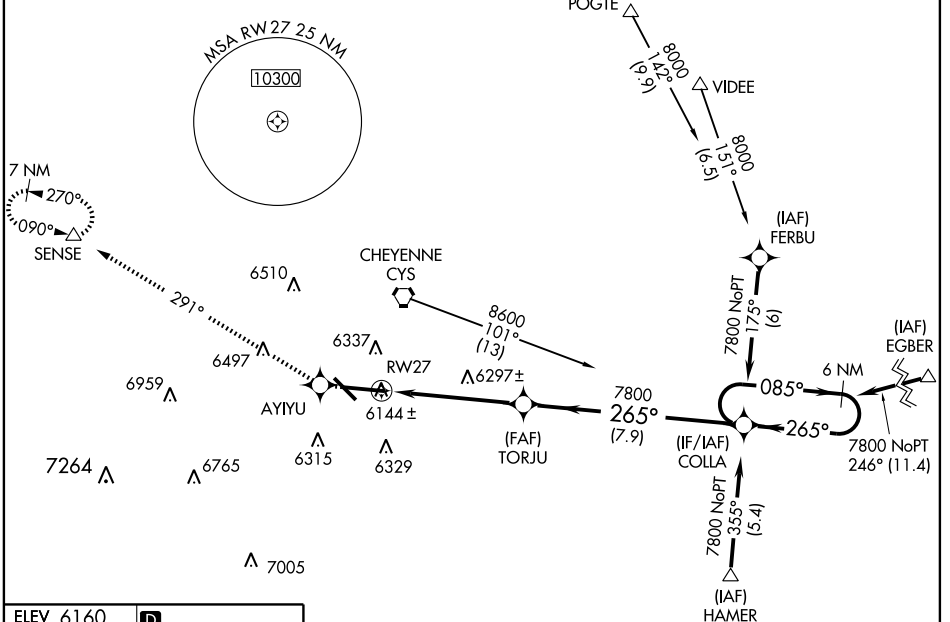
WAAS CH 70307 W27A	APP CRS 265°	Rwy Idg TDZE Apt Elev	7985 6121 6160
--	------------------------	-----------------------------	---

RNAV (GPS) RWY 27

CHEYENNE RGNL/JERRY OLSON FIELD (CYS)

 ASR/PAR Baro-VNAV NA below -27°C (-16°F). DME/DME RNP-0.3 NA.	 MISSED APPROACH: Climb to 10300 direct AYIU and via 291° track to SENSE and hold, continue climb-in-hold to 10300.	ATIS 134.425 278.3	CHEYENNE APP CON 124.55 263.075	CHEYENNE TOWER * 118.7 (CTAF) 125.7.8	GND CON 121.9 254.275	UNICOM 122.95
--	--	------------------------------	---	---	---------------------------------	-------------------------

Procedure NA for arrivals at CYS VORTAC on airway radial 154.



NW-1, 22 OCT 2009 to 19 NOV 2009

NW-1, 22 OCT 2009 to 19 NOV 2009

ELEV 6160 **D**

REIL Rwy 9, 13 and 31 **1**
HIRL Rwy 9-27 **1**
MIRL Rwy 13-31 **1**

10300	↑	AYIU	291° track	SENSE	TORJU	COLLA	6 NM Holding Pattern
*RNAV only		*1.3 NM to RWY 27		TORJU → 265° → COLLA → 085° → 7800 COLLA ← 265° ← TORJU			
		1.3 NM		3.8 NM		7.9 NM	
CATEGORY	A	B	C	D			
LPV DA	6380/24		259 (300-½)				
RNAV/VNAV DA	6480/40		359 (400-¾)				
RNAV MDA	6560/24	439 (500-½)	6560/40 439 (500-¾)	6560/50 439 (500-1)			
CIRCLING	6660-1	500 (500-1)	6660-1½ 500 (500-1½)	6720-2 560 (600-2)			