

WAAS CH <b>56609</b> <b>W13A</b>	APP CRS <b>125°</b>	Rwy Idg TDZE Apt Elev	<b>4469</b> <b>6154</b> <b>6159</b>
--	------------------------	-----------------------------	---

# RNAV (GPS) RWY 13

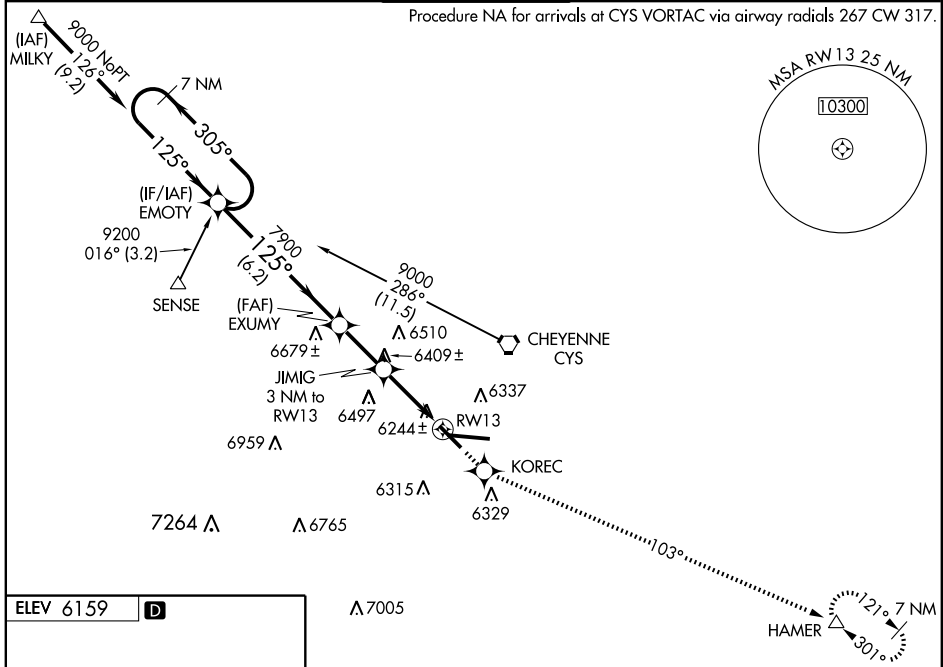
CHEYENNE RGNL/JERRY OLSON FIELD (CYS)

**⚠** Baro-VNAV NA when using Laramie altimeter setting.  
 For uncompensated Baro-VNAV systems, LNAV/VNAV NA below -27°C (-16°F) or above 36°C (96°F).  
**⚠** ASR/PAR DME/DME RNP -0.3 NA. Visibility reduction by helicopters NA.  
 When local altimeter setting not received, use Laramie altimeter setting and increase all DA/MDA 260 feet and all visibilities 1 mile.

MISSED APPROACH: Climb to 8500 direct KOREC and via 103° track to HAMER and hold.

ATIS <b>134.425 278.3</b>	CHEYENNE APP CON <b>124.55 263.075</b>	CHEYENNE TOWER * <b>118.7 (CTAF) 257.8</b>	GND CON <b>121.9 254.275</b>	UNICOM <b>122.95</b>
------------------------------	---	---	---------------------------------	-------------------------

Procedure NA for arrivals at CYS VORTAC via airway radials 267 CW 317.



NW-1, 22 OCT 2009 to 19 NOV 2009

NW-1, 22 OCT 2009 to 19 NOV 2009

ELEV 6159 **D**

REIL Rwy 9, 13 and 31 **Ⓛ**  
 HIRL Rwy 9-27 **Ⓛ**  
 MIRL Rwy 13-31 **Ⓛ**

7 NM Holding Pattern		EMOTY	EXUMY	JIMIG 3 NM to RW13	RW13
9000		305°	125°	125°	7900
GS 3.00° TCH 55		6.2 NM		2.2 NM	3 NM
VGS1 and RNAV glidepath not coincident		8500	KOREC	103° track	HAMER
		↑	⬠		△
		*LNAV only			
CATEGORY	A	B	C	D	
LPV DA	6481-1 327 (400-1)				
LNAV/VNAV DA	6539-1¼ 385 (400-1¼)				
LNAV MDA	6660-1 506 (600-1)	6660-1½ 506 (600-1½)			
CIRCLING	6660-1 501 (600-1)	6660-1½ 501 (600-1½)	6720-2 561 (600-2)		