

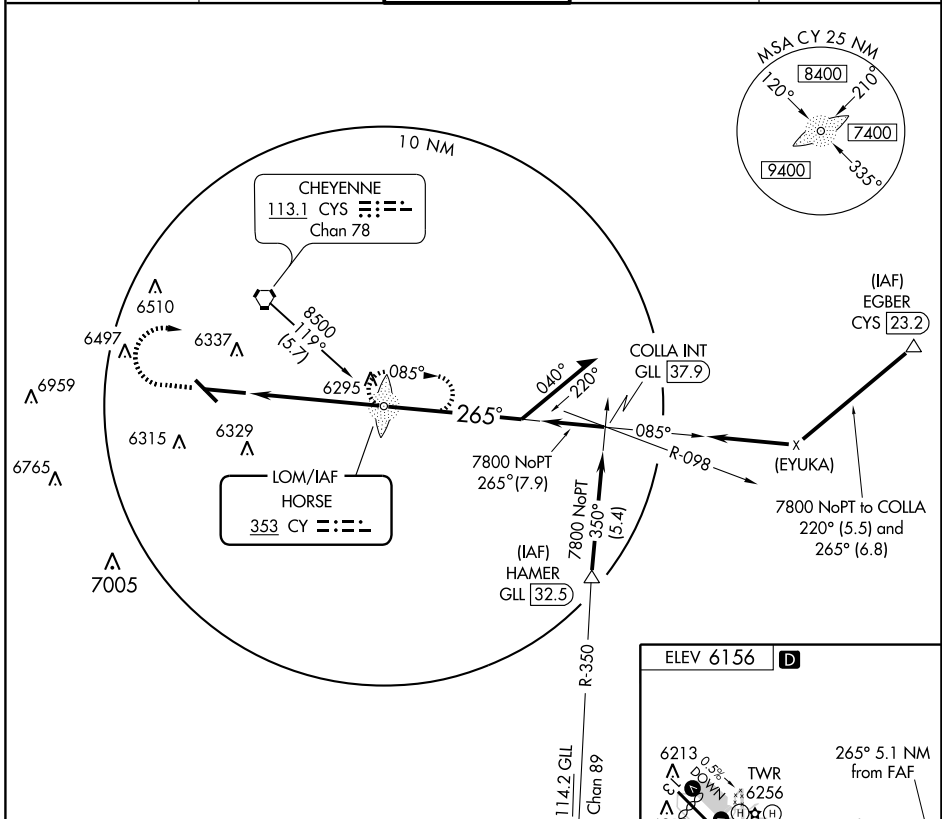
# NDB RWY 27

CHEYENNE RGNL/JERRY OLSON FIELD (CYS)

LOM CY <b>353</b>	APP CRS <b>265°</b>	Rwy Idg <b>7985</b>
		TDZE <b>6121</b>
		Apt Elev <b>6156</b>

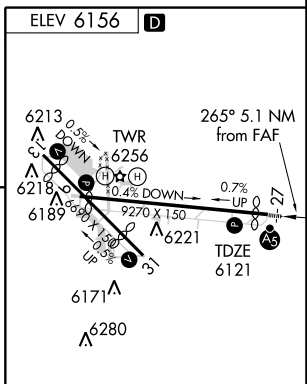
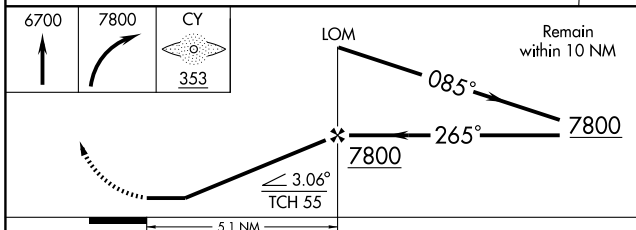
<p>ASR/PAR</p>	<p>MALSR</p>	<p>MISSED APPROACH: Climb to 6700, then climbing right turn to 7800 direct HORSE LOM and hold.</p>

ATIS <b>134.425 278.3</b>	CHEYENNE APP CON <b>124.55 263.075</b>	CHEYENNE TOWER * <b>118.7 (CTAF) 0 257.8</b>	GND CON <b>121.9 254.275</b>	UNICOM <b>122.95</b>
------------------------------	---	---	---------------------------------	-------------------------



NW-1, 22 OCT 2009 to 19 NOV 2009

NW-1, 22 OCT 2009 to 19 NOV 2009



CATEGORY	A	B	C	D
S-27	6620/50	499 (500-1)	6620/60 499 (500-1½)	6620-1½ 499 (500-1½)
CIRCLING	6660-1	504 (600-1)	6660-1½ 504 (600-1½)	6720-2 564 (600-2)

REIL Rwys 9, 13 and 31	
HIRL Rwy 9-27	
MIRL Rwy 13-31	
FAF to MAP 5.1 NM	
Knots	60 90 120 150 180
Min:Sec	5:06 3:24 2:33 2:02 1:42