

CHATTANOOGA, TENNESSEE

AL-79 (FAA)

WAAS CH 70305 W20A	APP CRS 199°	Rwy Idg TDZE Apt Elev	7400 673 682
--	------------------------	-----------------------------	---

RNAV (GPS) RWY 20

CHATTANOOGA/LOVELL FIELD (CHA)

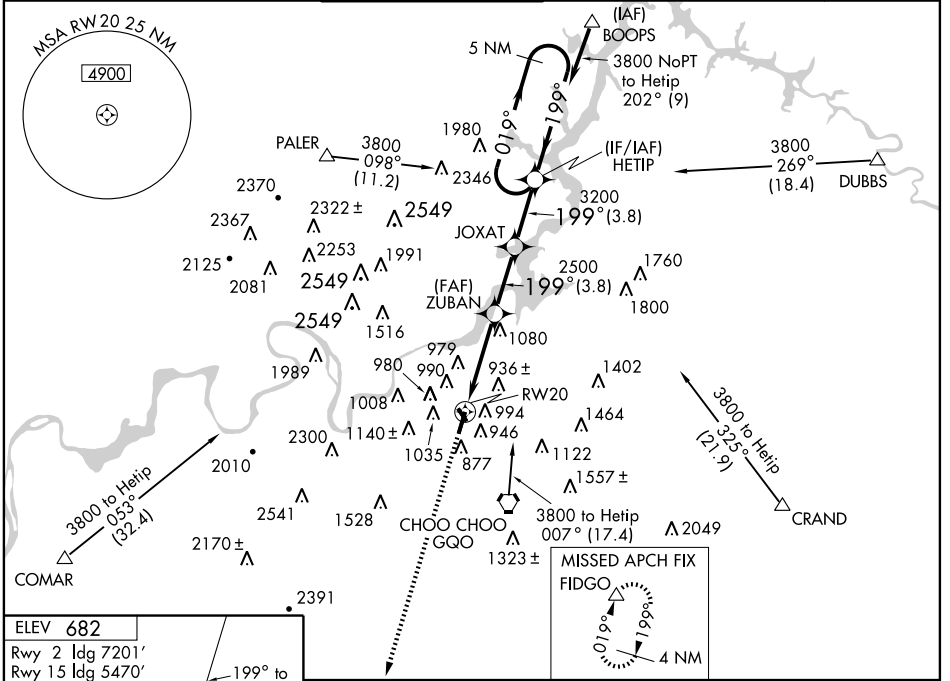
▼ If local altimeter setting not received, use Dalton altimeter setting: increase LPV DA to 992 feet; increase LNAV/VNAV DA to 1342 feet; increase all MDAs 80 feet.
 ▲ For inoperative ALSF, increase LPV visibility to 1, all Cats. DME/DME RNP-0.3 NA.
 ASR Circling to Rwy 15/33 NA when control tower closed. Baro VNAV and VDP NA when using Dalton altimeter setting. Baro-VNAV NA below -15° C (4° F).

ALSF-2



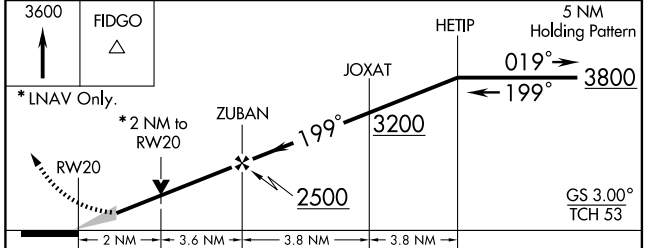
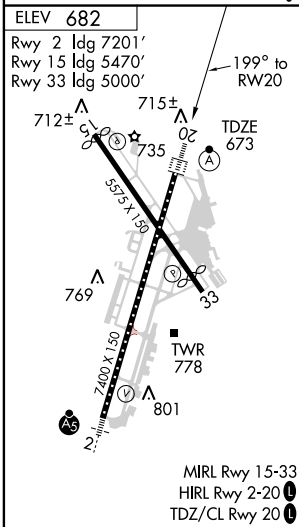
MISSED APPROACH:
Climb to 3600 direct
FIDGO and hold.

ATIS 119.85	CHATTANOOGA APP CON * 125.1 379.1	CHATTANOOGA TOWER * 118.3 (CTAF) 0 257.8	GND CON 121.7 348.6	CLNC DEL 120.95 348.6	UNICOM 122.95
-----------------------	---	--	-------------------------------	---------------------------------	-------------------------



SE-1, 22 OCT 2009 to 19 NOV 2009

SE-1, 22 OCT 2009 to 19 NOV 2009



CATEGORY	A	B	C	D
LPV DA	930/24		257 (300-1/2)	
LNAV/VNAV DA	1280-1 3/4		607 (600-1 3/4)	
LNAV MDA	1340/24	667 (700-1/2)	1340/60 667 (700-1 1/4)	1340-1 1/2 667 (700-1 1/2)
CIRCLING	1340-2 1/4		658 (700-2 1/4)	
			1460-2 1/2 778 (800-2 1/2)	

CHATTANOOGA, TENNESSEE
Orig 09295

35°02'N-85°12'W

CHATTANOOGA/LOVELL FIELD (CHA)

RNAV (GPS) RWY 20