


# RNAV (GPS) RWY 2

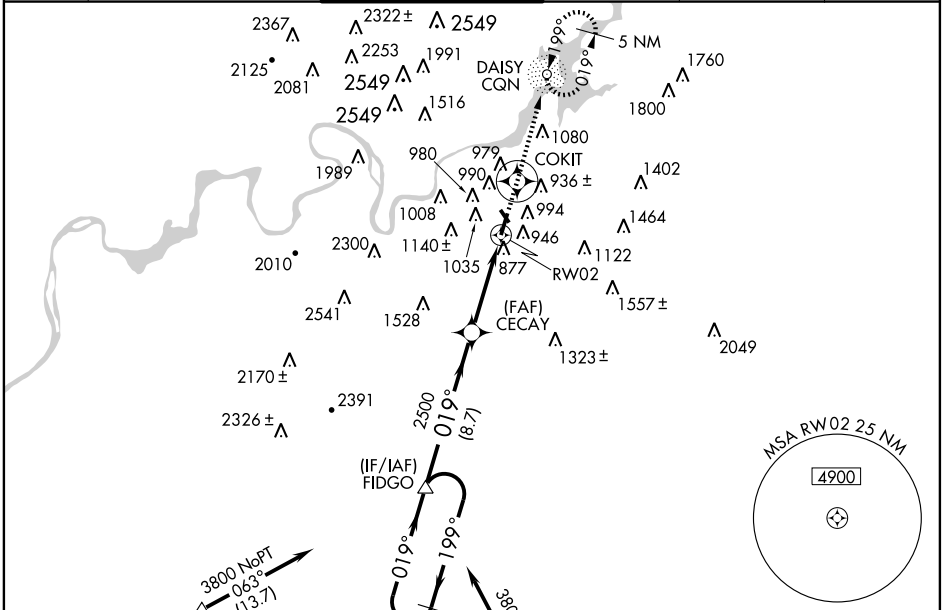
CHATTANOOGA/LOVELL FIELD (CHA)

WAAS CH <b>65605</b> <b>W02A</b>	APP CRS <b>019°</b>	Rwy ldg TDZE Apt Elev	<b>7201</b> <b>682</b> <b>682</b>
--	------------------------	-----------------------------	---

If local altimeter setting not received, use Dalton altimeter setting: increase LPV DA to 1058 feet, increase LNAV/VNAV DA to 1243 feet; increase all MDAs 80 feet.  
 For inoperative MALSR, increase LPV visibility to RVR 5000 all Cats. DME/DME ASR RNP-0.3 NA. Circling to Rwy 15/33 NA when control tower closed. Baro VNAV and VDP NA when using Dalton altimeter setting. Baro-VNAV NA below -16°C (4°F).

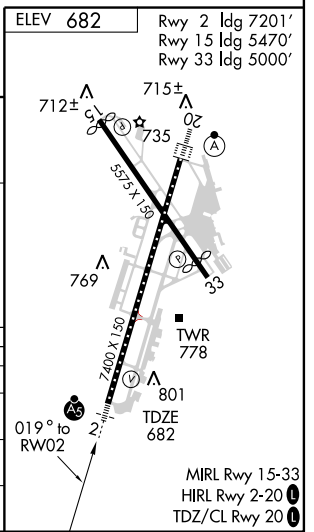
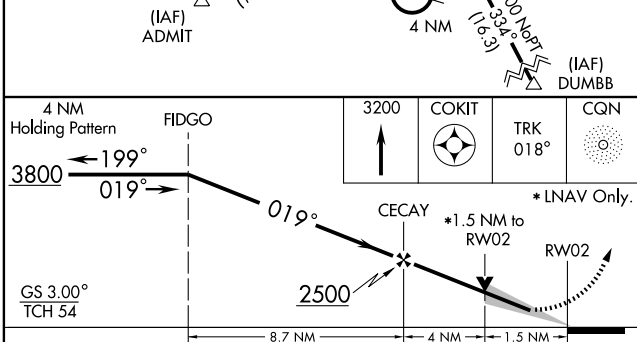
**MALSR**  
  
**MISSED APPROACH:**  
 Climb to 3200 direct COKIT and via 018° track to CGN NDB and hold.

ATIS <b>119.85</b>	CHATTANOOGA APP CON * <b>125.1 379.1</b>	CHATTANOOGA TOWER * <b>118.3 (CTAF) 0 257.8</b>	GND CON <b>121.7 348.6</b>	CLNC DEL <b>120.95 348.6</b>	UNICOM <b>122.95</b>
-----------------------	---	--	-------------------------------	---------------------------------	-------------------------



SE-1, 22 OCT 2009 to 19 NOV 2009

SE-1, 22 OCT 2009 to 19 NOV 2009



CATEGORY	A	B	C	D
LPV DA		996/24	314 (400-1/2)	
LNAV/VNAV DA		1181/60	499 (500-1 1/4)	
LNAV MDA	1200/24	518 (600-1/2)	1200/50 518 (600-1)	1200/60 518 (600-1 1/4)
CIRCLING	1300-1 3/4 618 (700-1 3/4)	1340-1 3/4	658 (700-1 3/4)	1460-2 1/2 778 (800-2 1/2)

MIRL Rwy 15-33  
 HIRL Rwy 2-20  
 TDZ/CL Rwy 20