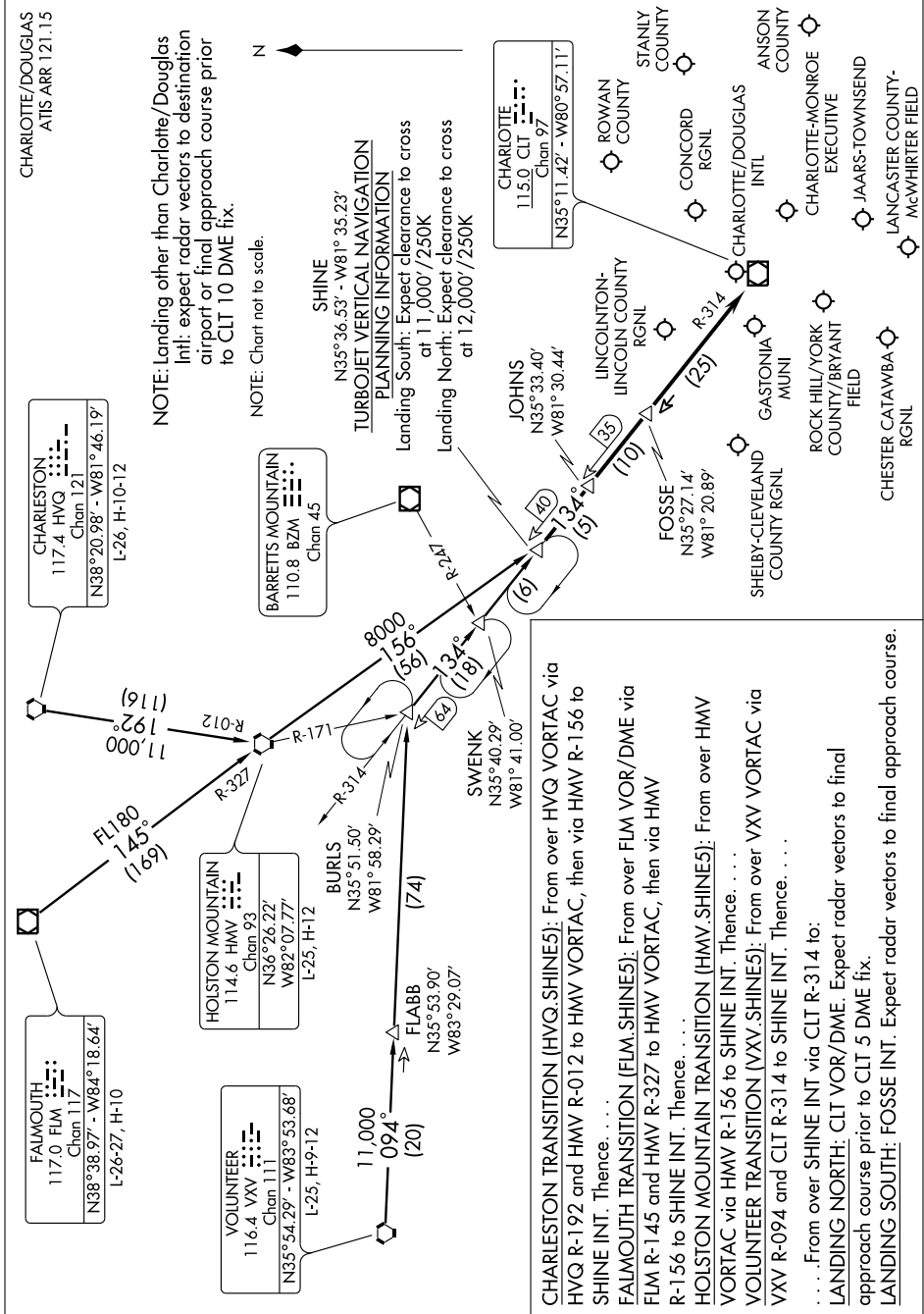


# SHINE FIVE ARRIVAL

CHARLOTTE, NORTH CAROLINA

SE-2, 22 OCT 2009 to 19 NOV 2009



NOTE: Landing other than Charlotte/Douglas Intl: expect radar vectors to destination airport or final approach course prior to CLT 10 DME fix.

NOTE: Chart not to scale.

SHINE  
 N35°36.53' - W81°35.23'  
 TURBOJET VERTICAL NAVIGATION  
 PLANNING INFORMATION  
 Landing South: Expect clearance to cross at 11,000' /250K  
 Landing North: Expect clearance to cross at 12,000' /250K

CHARLESTON TRANSITION (HVQ.SHINE5): From over HVQ VORTAC via HVQ R-192 and HMV R-012 to HMV VORTAC, then via HMV R-156 to SHINE INT. Thence, . . . . .  
 FALMOUTH TRANSITION (FLM.SHINE5): From over FLM VOR/DME via FLM R-145 and HMV R-327 to HMV VORTAC, then via HMV R-156 to SHINE INT. Thence, . . . . .  
 HOLSTON MOUNTAIN TRANSITION (HMV.SHINE5): From over HMV VORTAC via HMV R-156 to SHINE INT. Thence, . . . . .  
 VOLUNTEER TRANSITION (VV.SHINE5): From over VV VORTAC via VV R-094 and CLT R-314 to SHINE INT. Thence, . . . . .  
 . . . . . From over SHINE INT via CLT R-314 to:  
 LANDING NORTH: CLT VOR/DME. Expect radar vectors to final approach course prior to CLT 5 DME fix.  
 LANDING SOUTH: FOSSE INT. Expect radar vectors to final approach course.

SE-2, 22 OCT 2009 to 19 NOV 2009

# SHINE FIVE ARRIVAL

CHARLOTTE, NORTH CAROLINA