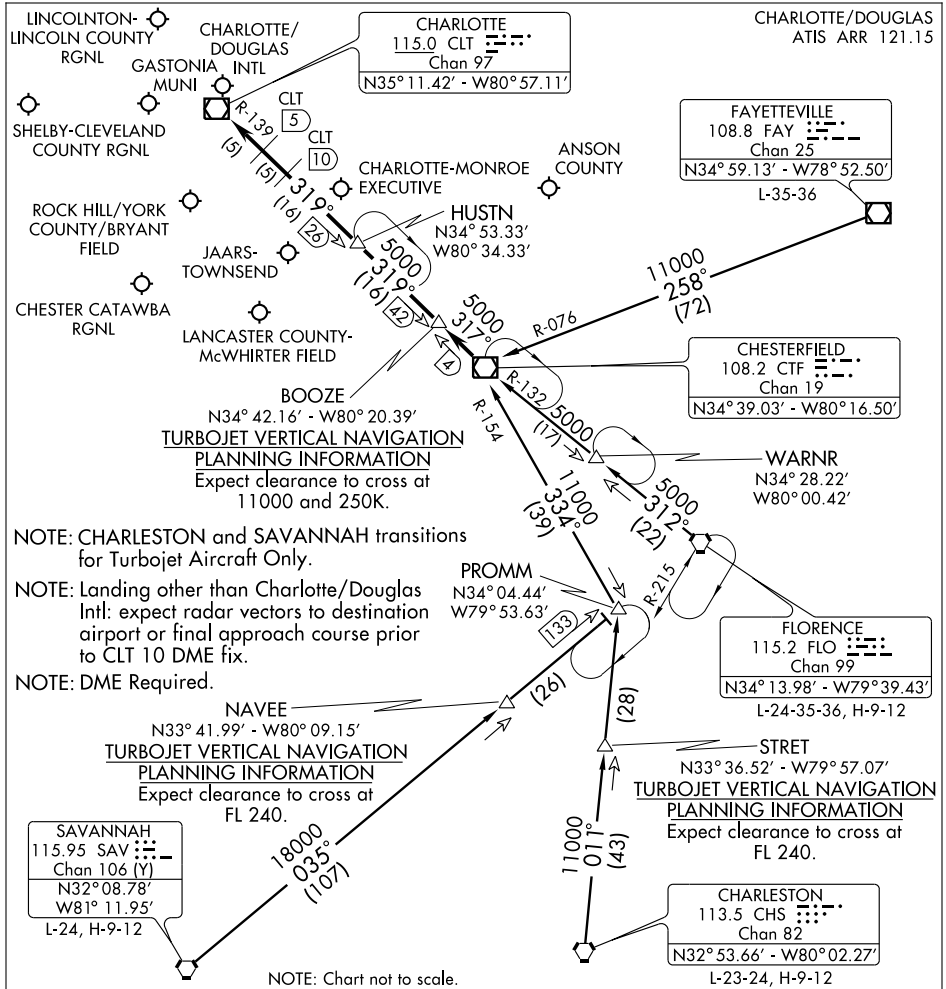


CHESTERFIELD THREE ARRIVAL

CHARLOTTE, NORTH CAROLINA



SE-2, 22 OCT 2009 to 19 NOV 2009

SE-2, 22 OCT 2009 to 19 NOV 2009

NOTE: CHARLESTON and SAVANNAH transitions for Turbojet Aircraft Only.

NOTE: Landing other than Charlotte/Douglas Intl: expect radar vectors to destination airport or final approach course prior to CLT 10 DME fix.

NOTE: DME Required.

NAVEE
 N33° 41.99' - W80° 09.15'
TURBOJET VERTICAL NAVIGATION PLANNING INFORMATION
 Expect clearance to cross at FL 240.

STRET
 N33° 36.52' - W79° 57.07'
TURBOJET VERTICAL NAVIGATION PLANNING INFORMATION
 Expect clearance to cross at FL 240.

NOTE: Chart not to scale.

- CHARLESTON TRANSITION (CHS.CTF3):** From over CHS VORTAC via CHS R-011 to PROMM INT then via CTF R-154 to CTF VOR/DME. Thence....
- FAYETTEVILLE TRANSITION (FAY.CTF3):** From over FAY VOR/DME via FAY R-258 and CTF R-076 to CTF VOR/DME. Thence....
- FLORENCE TRANSITION (FLO.CTF3):** From over FLO VORTAC via FLO R-312 and CTF R-132 to CTF VOR/DME. Thence....
- SAVANNAH TRANSITION (SAV.CTF3):** From over SAV VORTAC via SAV R-035 to PROMM INT then via CTF R-154 to CTF VOR/DME. Thence....
- ... From over CTF VOR/DME via CTF R-317 to BOOZE, then via CLT R-139 to:
- (LANDING NORTH) HUSTN INT:** Expect radar vectors to final approach course.
- (LANDING SOUTH) CLT VOR/DME:** Expect radar vectors to final approach course prior to CLT 5 DME fix.

CHESTERFIELD THREE ARRIVAL

CHARLOTTE, NORTH CAROLINA