

CHARLESTON, SOUTH CAROLINA

AL-76 (FAA)

VOR/DME or TACAN RWY 21

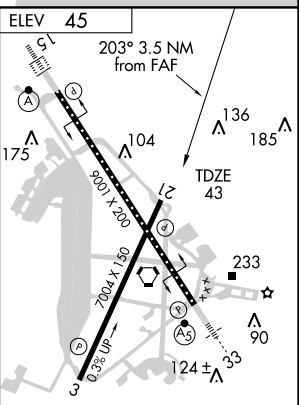
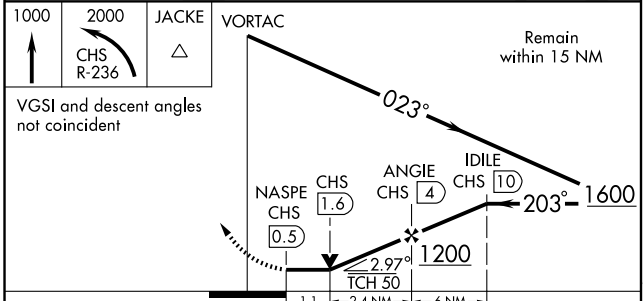
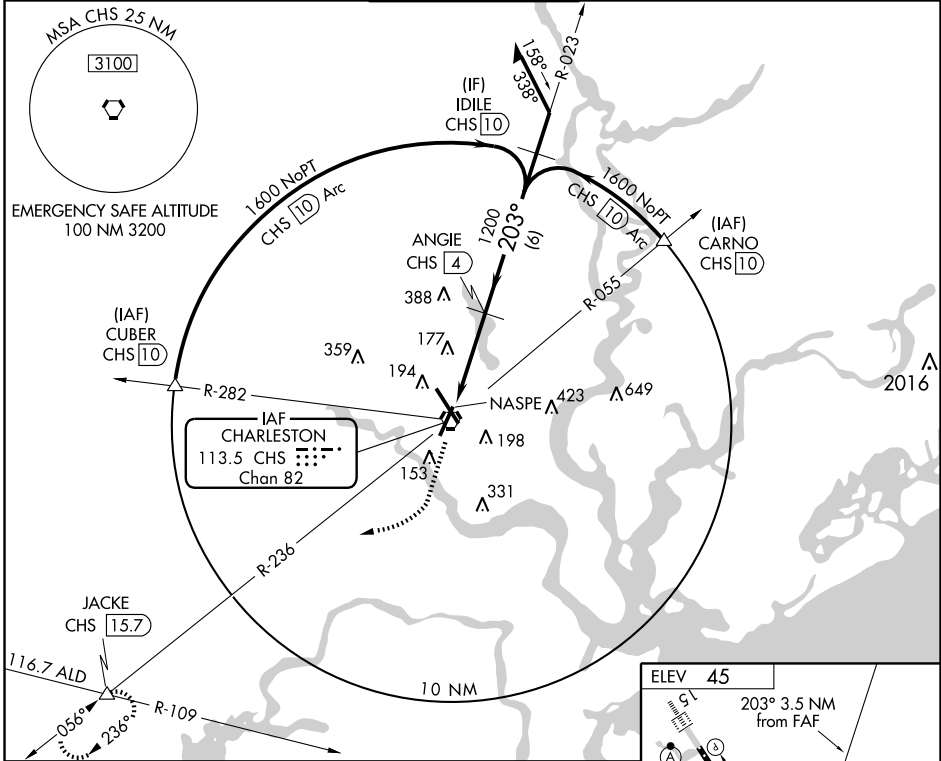
CHARLESTON AFB/INTL (CHS)

VORTAC CHS 113.5 Chan 82	APP CRS 203°	Rwy Idg TDZE 43 Apt Elev 45	7004
--	------------------------	---	-------------

▽
▲

MISSED APPROACH: Climb to 1000 then climbing right turn to 2000 via CHS R-236 to JACKIE INT/15.7 DME and hold.

ATIS 124.75	CHARLESTON APP CON 120.7 306.925	CHARLESTON TOWER 126.0 239.0	GND CON 121.9 348.6	CLNC DEL 127.325 381.6
-----------------------	--	--	-------------------------------	----------------------------------



CATEGORY	A	B	C	D	E
S-21	440-1 397 (400-1)			440-1¼ 397 (400-1¼)	440-1½ 397 (400-1½)
CIRCLING	540-1 495 (500-1)		540-1½ 495 (500-1½)	600-2 555 (600-2)	740-2½ 695 (700-2½)

TDZ/CL Rwy 15
REIL Rwy 3 and 21
HIRL Rwy 3-21 and 15-33

CHARLESTON, SOUTH CAROLINA
Amdt 14 09183

32° 54'N-80° 02'W

CHARLESTON AFB/INTL (CHS)

VOR/DME or TACAN RWY 21

SE-2, 22 OCT 2009 to 19 NOV 2009

SE-2, 22 OCT 2009 to 19 NOV 2009