


RNAV (GPS) RWY 33

CHARLESTON AFB/ INTL (CHS)

WAAS CH 81818 W33A	APP CRS 332°	Rwy Idg 9001 TDZE 45 Apt Elev 45
--	------------------------	---

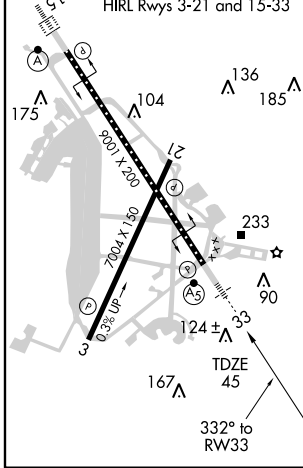
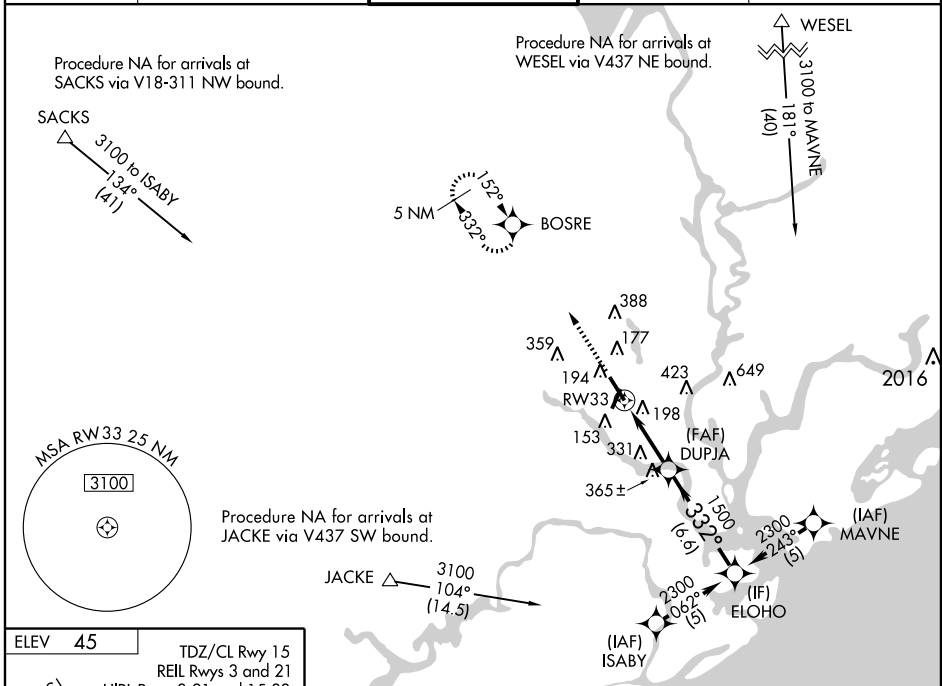
▽ DME/DME RNP-0.3 NA. Baro-VNAV NA below -15°C (5°F).
△ For inoperative MALSR, increase LPV visibility to RVR 5000
 all Cats, LNAV/VNAV Cat E visibility to 1 ½, LNAV Cat E
 visibility to 2.

MALSR



MISSED APPROACH: Climb to 2400 direct to BOSRE and hold.

ATIS 124.75	CHARLESTON APP CON 120.7 306.925	CHARLESTON TOWER 126.0 239.0	GND CON 121.9 348.6	CLNC DEL 127.325 381.6
-----------------------	--	--	-------------------------------	----------------------------------



2400 BOSRE VGSi and RNAV glidepath not coincident.

Procedure Turn NA

ELOHO 2300

DUPJA

*LNAV only *1.7 NM to RW33

RW33 1500 332°

1.7 NM 2.7 NM 6.6 NM

GS 3.00° TCH 46

CATEGORY	A	B	C	D	E
LPV DA	314/24 269 (300-½)				
LNAV/VNAV DA	497/50 452 (500-1)				
LNAV MDA	640/24	595 (600-½)	640/50 595 (600-1)	640/60 595 (600-1½)	640-1½ 595 (600-1½)
CIRCLING	640-1½ 595 (600-1½)		640-2 595 (600-2)		740-2½ 695 (700-2½)

SE-2, 22 OCT 2009 to 19 NOV 2009

SE-2, 22 OCT 2009 to 19 NOV 2009