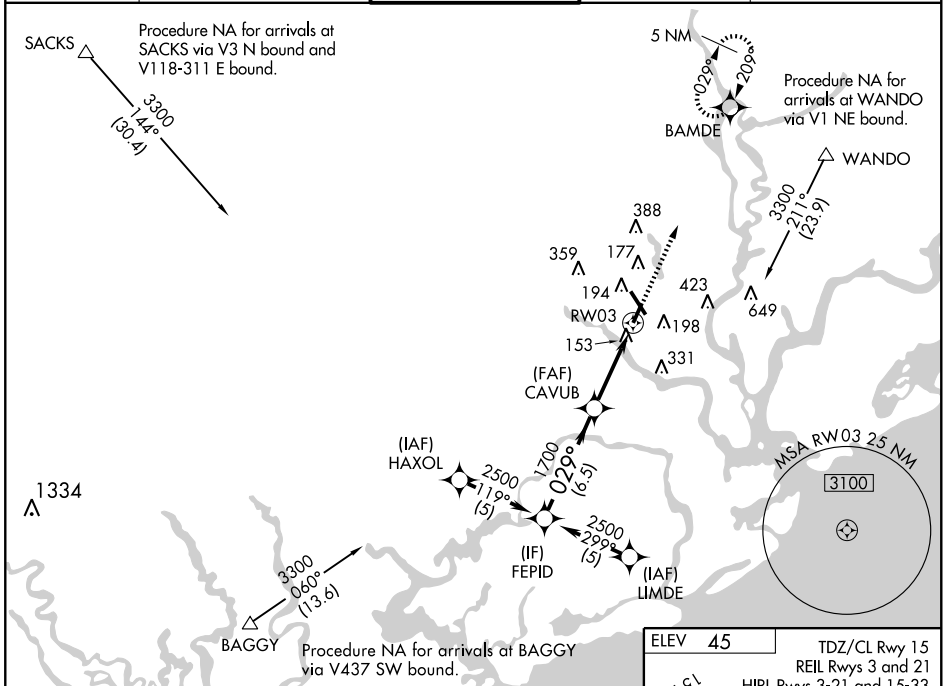


RNAV (GPS) RWY 3

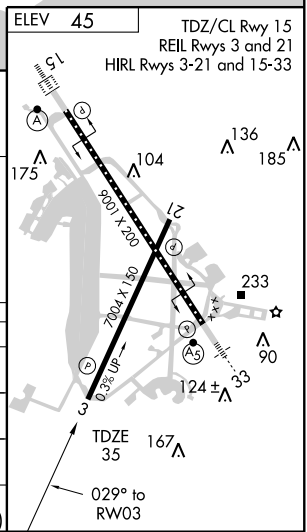
CHARLESTON AFB/INTL (CHS)

WAAS CH 86699 W03A	APP CRS 029°	Rwy Idg TDZE Apt Elev	7004 35 45
--	------------------------	-----------------------------	---------------------------------------

<p>⚠ DME/DME RNP-0.3 NA. Baro-VNAV NA below -15°C (5°F). ⚠ For inoperative SSALR, increase LPV visibility to 1 all Cats, LNAV/VNAV Cat E visibility to 1½, LNAV Cat A and B visibility to 1, Cat D visibility to 1¼, and Cat E visibility to 1½.</p>		<p>MISSED APPROACH: Climb to 2500 direct BAMDE and hold.</p>	
ATIS 124.75	CHARLESTON APP CON 120.7 306.925	CHARLESTON TOWER 126.0 239.0	CLNC DEL 127.325 381.6
GND CON 121.9 348.6		CLNC DEL 127.325 381.6	



Procedure Turn NA	<p>2500 BAMDE</p> <p>FEPID</p> <p>CAVUB</p> <p>RW03</p> <p>*1.2 NM to RW03</p> <p>*LNAV only.</p> <p>GS 3.00° TCH 50</p> <p>6.5 NM</p> <p>3.9 NM</p> <p>1.2 NM</p>																																	
	<table border="1"> <thead> <tr> <th>CATEGORY</th> <th>A</th> <th>B</th> <th>C</th> <th>D</th> <th>E</th> </tr> </thead> <tbody> <tr> <td>LPV DA</td> <td colspan="2">286-¾</td> <td>251 (300-¾)</td> <td></td> <td></td> </tr> <tr> <td>LNAV/VNAV DA</td> <td colspan="2">458-1</td> <td>423 (500-1)</td> <td></td> <td></td> </tr> <tr> <td>LNAV MDA</td> <td>440-¾</td> <td>405 (400-¾)</td> <td colspan="2">440-1</td> <td>405 (400-1)</td> </tr> <tr> <td>CIRCLING</td> <td>540-1½</td> <td>495 (500-1½)</td> <td>600-2</td> <td>740-2½</td> <td>695 (700-2½)</td> </tr> </tbody> </table>					CATEGORY	A	B	C	D	E	LPV DA	286-¾		251 (300-¾)			LNAV/VNAV DA	458-1		423 (500-1)			LNAV MDA	440-¾	405 (400-¾)	440-1		405 (400-1)	CIRCLING	540-1½	495 (500-1½)	600-2	740-2½
CATEGORY	A	B	C	D	E																													
LPV DA	286-¾		251 (300-¾)																															
LNAV/VNAV DA	458-1		423 (500-1)																															
LNAV MDA	440-¾	405 (400-¾)	440-1		405 (400-1)																													
CIRCLING	540-1½	495 (500-1½)	600-2	740-2½	695 (700-2½)																													



SE-2, 22 OCT 2009 to 19 NOV 2009

SE-2, 22 OCT 2009 to 19 NOV 2009