

CHANUTE, KANSAS

AL-75 (FAA)

VOR/DME CNU <b>109.2</b> Chan 29	APP CRS <b>002°</b>	Rwy Idg TDZE Apt Elev	<b>3985</b> <b>1002</b> <b>1002</b>
--	------------------------	-----------------------------	---

# VOR/DME RNAV or GPS RWY 36

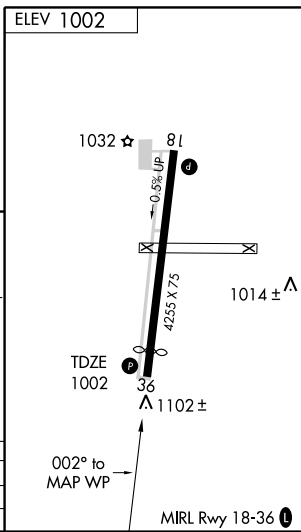
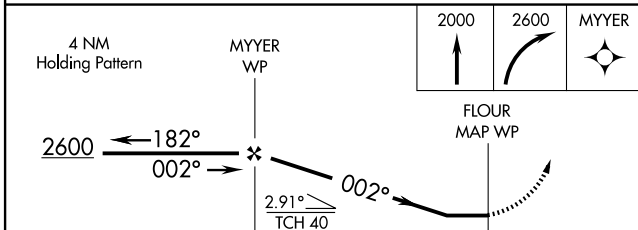
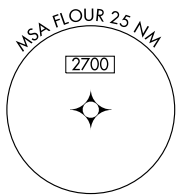
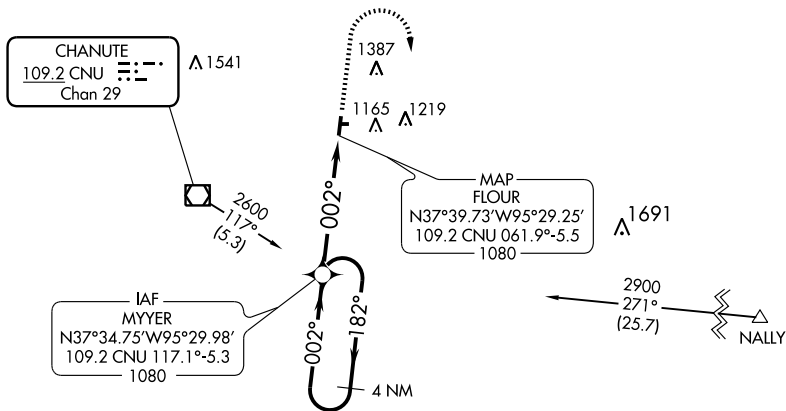
CHANUTE MARTIN JOHNSON (CNU)

MISSED APPROACH: Climb to 2000 then climbing right turn to 2600 direct MYYER WP and hold.

ASOS <b>127.075</b>	KANSAS CITY CENTER <b>132.9 279.5</b>	UNICOM <b>122.7 (CTAF)</b>
------------------------	--	-------------------------------

NC-2, 22 OCT 2009 to 19 NOV 2009

NC-2, 22 OCT 2009 to 19 NOV 2009



CATEGORY	A	B	C	D
S-36	1420-1	418 (500-1)		NA
CIRCLING	1480-1	478 (500-1)		NA

CHANUTE, KANSAS  
Amdt 3C 08325

37°40'N-95°29'W

# CHANUTE MARTIN JOHNSON (CNU)

## VOR/DME RNAV or GPS RWY 36