

CHANUTE, KANSAS

AL-75 (FAA)

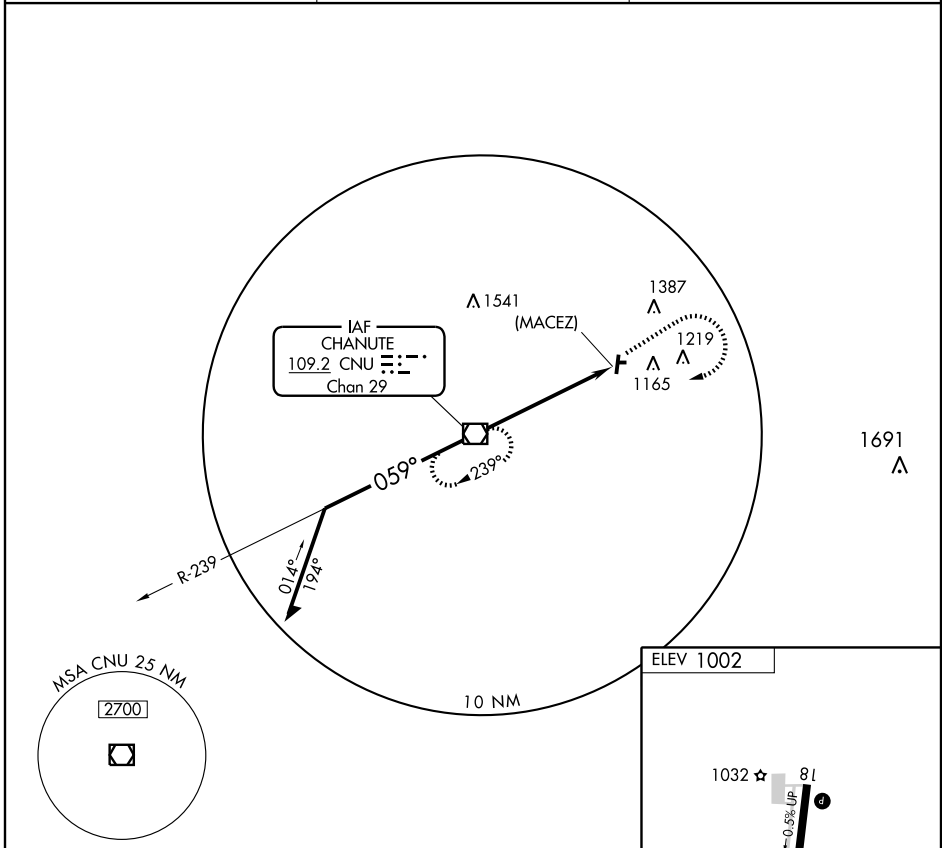
VOR/DME CNU <b>109.2</b> Chan <b>29</b>	APP CRS <b>059°</b>	Rwy Idg TDZE Apt Elev <b>1002</b>	<b>N/A</b> <b>N/A</b> <b>1002</b>
---	------------------------	--	---

# VOR/DME or GPS-A

CHANUTE MARTIN JOHNSON (CNU)

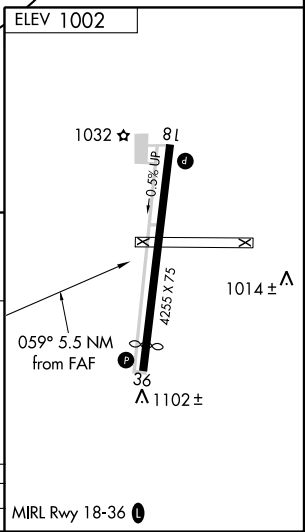
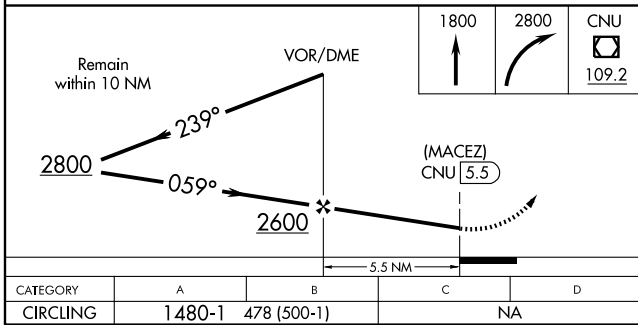
MISSED APPROACH: Climb to 1800 then climbing right turn to 2800 direct CNU VOR/DME and hold.

ASOS <b>127.075</b>	KANSAS CITY CENTER <b>132.9 279.5</b>	UNICOM <b>122.7</b> (CTAF) <b>1</b>
------------------------	--	--



NC-2, 22 OCT 2009 to 19 NOV 2009

NC-2, 22 OCT 2009 to 19 NOV 2009



CATEGORY	A	B	C	D
CIRCLING	1480-1	478 (500-1)	NA	

MIRL Rwy 18-36 **1**

CHANUTE, KANSAS  
Amdt 9C 08325

37°40'N-95°29'W

# CHANUTE MARTIN JOHNSON (CNU)

## VOR/DME or GPS-A