

PHOENIX, ARIZONA

AL-74 (FAA)

# RNAV (GPS) RWY 12C

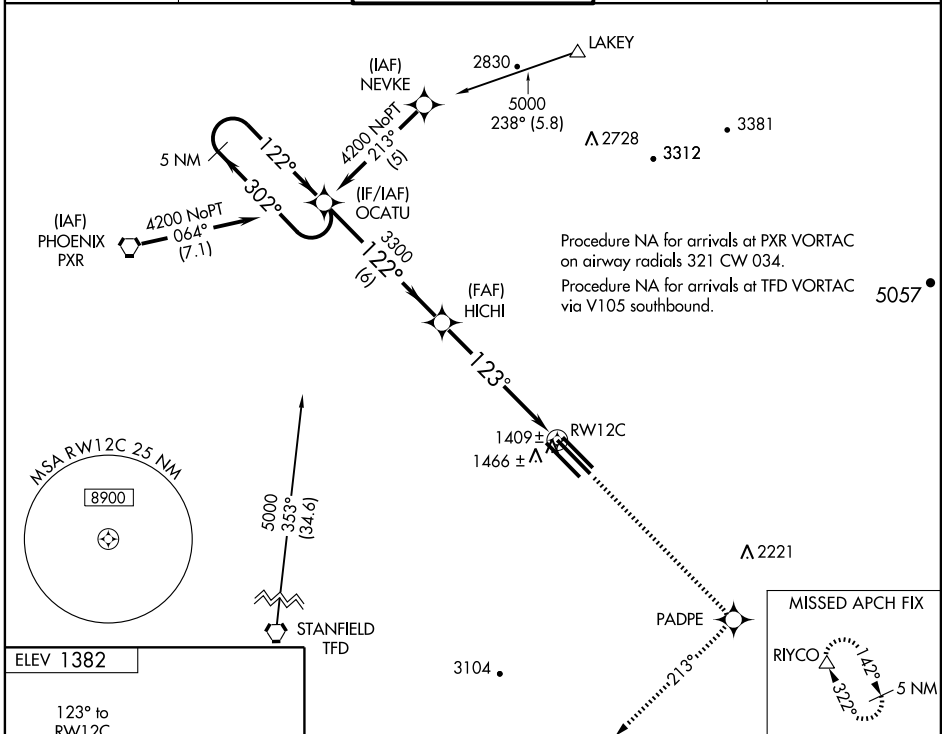
PHOENIX-MESA GATEWAY (IWA)

WAAS CH <b>58200</b> <b>W12A</b>	APP CRS <b>123°</b>	Rwy Idg <b>10201</b> TDZE <b>1358</b> Apt Elev <b>1382</b>
--	------------------------	--

▼ DME/DME RNP-0.3 NA.  
For uncompensated Baro-VNAV systems LNAV/VNAV NA below -17°C (2°F) or above 46°C (115°F).

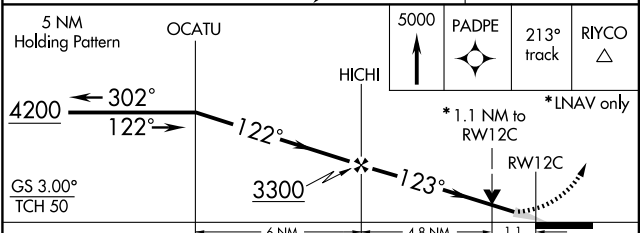
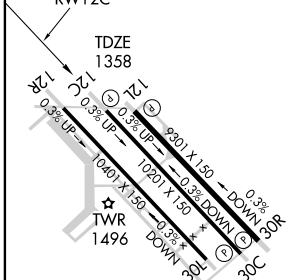
MISSED APPROACH: Climb to 5000 direct PADPE and via 213° track to RIYCO and hold.

ATIS <b>133.5 270.275</b>	PHOENIX APP CON <b>124.9 353.8</b>	GATEWAY TOWER * <b>120.6 (CTAF) 289.4 (WEST)</b> <b>124.75 379.225 (EAST)</b>	GND CON <b>128.25 275.8</b>	CLNC DEL <b>135.05</b>
------------------------------	---------------------------------------	---	--------------------------------	---------------------------



SW-4, 22 OCT 2009 to 19 NOV 2009

SW-4, 22 OCT 2009 to 19 NOV 2009



CATEGORY	A	B	C	D	E
LPV DA	1608-1 250 (300-1)				
LNAV/VNAV DA	1685-1¼ 327 (400-1¼)				
LNAV MDA	1740-1 382 (400-1)		1740-1¼ 382 (400-1¼)		
CIRCLING	1800-1¼ 418 (500-1¼)	1840-1¼ 458 (500-1¼)	1840-1½ 458 (500-1½)	1940-2 558 (600-2)	

MIRL Rwy 12R-30L  
HIRL Rwys 12L-30R and 12C-30C  
REIL Rwys 12L and 30R

PHOENIX, ARIZONA  
Amdt 1 09127

33°18'N-111°39'W

# PHOENIX-MESA GATEWAY (IWA) RNAV (GPS) RWY 12C