

# HI-VOR/DME or TACAN RWY 30C

TACAN IWA Chan 80	APCH CRS 302°	Rwy Idg 10,201 TDZE 1380 Arpt Elev 1382
-------------------	---------------	---

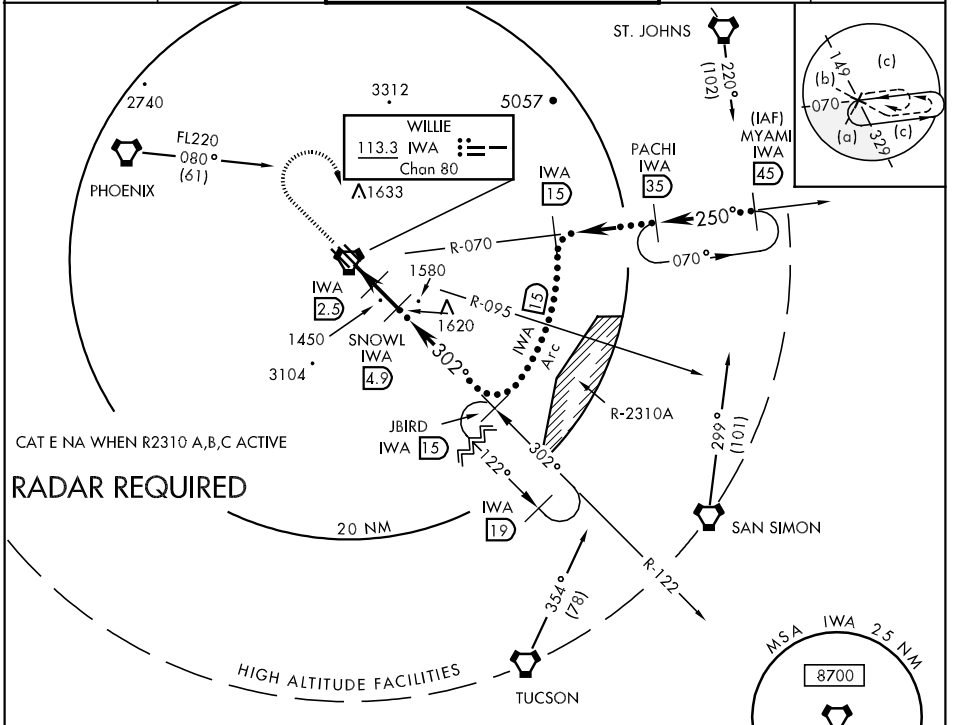
JAL-74 [USAF]

PHOENIX-MESA GATEWAY (KIWA)

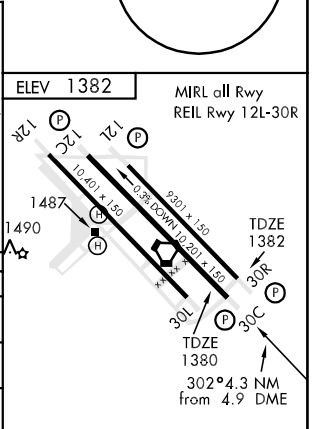
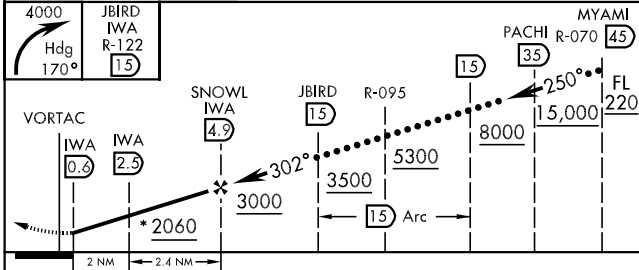
▼ When local altimeter not received, use Phoenix Sky Harbor Intl altimeter setting and increase all MDA's 80 feet and visibilities ½ mile. \* 2140 when using Phoenix Sky Harbor Intl altimeter setting.

MISSED APPROACH: Climbing right turn to 4000 via heading 170° and IWA R-122 to JBIRD 15 DME and hold.

ATIS 133.5 270.275	PHOENIX APP CON 124.9 353.8	GATEWAY TOWER WEST 120.6 (CTAF) EAST 289.4 124.75 379.225	GND CON 128.25 275.8	CLNC DEL 128.25 275.8
--------------------	-----------------------------	---	----------------------	-----------------------



EMERG SAFE ALT 100 NM 11,800



CATEGORY	C	D	E
S-30C	1700-¾ 320	(400-¾)	1700-1¼ 320 (400-1¼)
SIDESTEP 30R	1700-1½ 318 (400-1½)	1700-2 318 (400-2)	
CIRCLING	1840-1½ 458 (500-1½)	1940-2 558 (600-2)	

# HI-VOR/DME or TACAN RWY 30C

SW-4, 22 OCT 2009 to 19 NOV 2009

SW-4, 22 OCT 2009 to 19 NOV 2009