

CASPER, WYOMING

AL-72 (FAA)

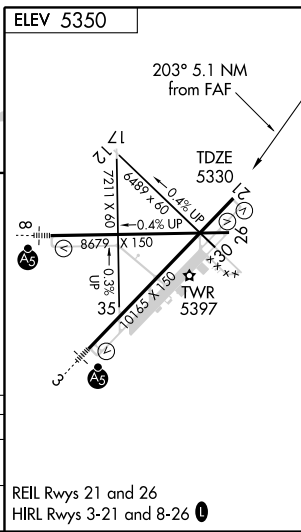
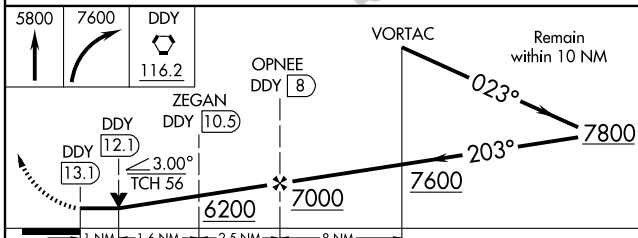
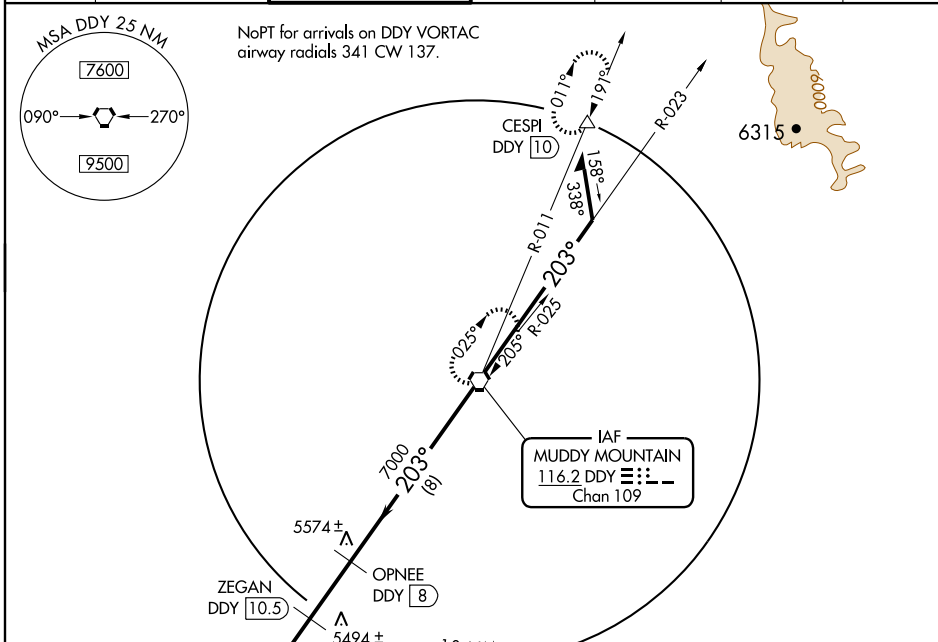
VOR/DME or TACAN RWY 21

CASPER/NATRONA COUNTY INTL (CPR)

VORTAC DDY 116.2 Chan 109	APP CRS 203°	Rwy Idg TDZE Apt Elev	10165 5330 5350
---	------------------------	-----------------------------	--

MISSED APPROACH: Climb to 5800, then climbing right turn to 7600 direct DDY VORTAC and hold (TACAN aircraft continue climb to 8000 via DDY VORTAC R-011 to CESPI/10 DME and Hold N, RT, 191° inbound).

ATIS 126.15	CASPER APP CON * 120.65 354.1	CASPER TOWER * 118.3 (CTAF) 257.8	GND CON 121.9	CLNC DEL 121.9 257.8	CASPER RADIO 122.4	UNICOM 122.95
-----------------------	---	---	-------------------------	--------------------------------	------------------------------	-------------------------



CATEGORY	A	B	C	D
S-21	5680-1 350 (400-1)			5680-1¼ 350 (400-1¼)
CIRCLING	5780-1 430 (500-1)	5800-1 450 (500-1)	5800-1½ 450 (500-1½)	5900-2 550 (600-2)

CASPER, WYOMING
Amdt 8B 09155

42°54'N-106°28'W

CASPER/NATRONA COUNTY INTL (CPR)

VOR/DME or TACAN RWY 21

REIL Rwy 21 and 26
HIRL Rwy 3-21 and 8-26

NW-1, 22 OCT 2009 to 19 NOV 2009

NW-1, 22 OCT 2009 to 19 NOV 2009