

RNAV (GPS) RWY 21

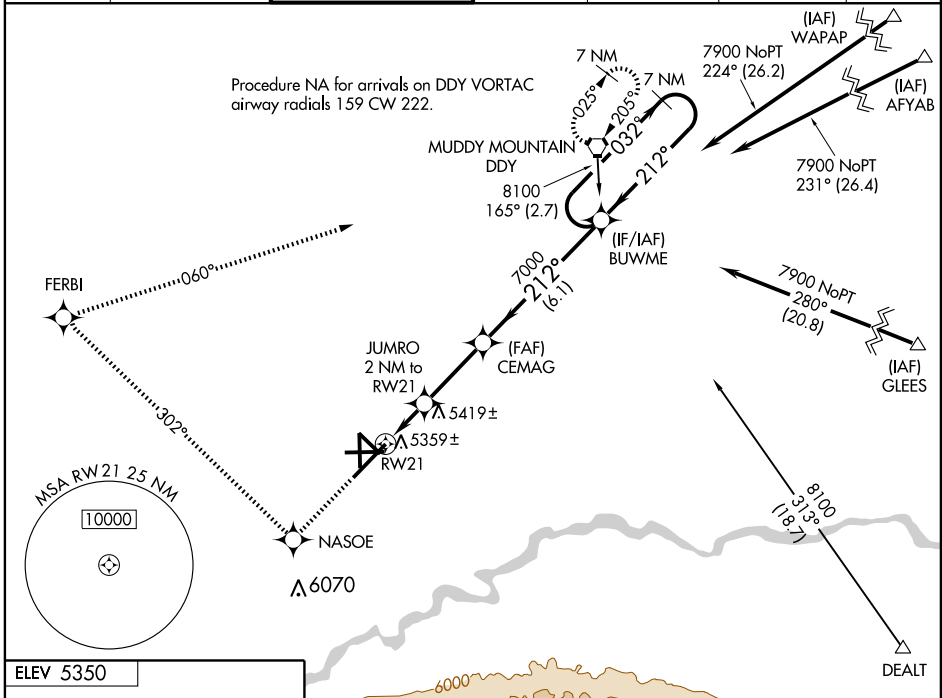
CASPER/NATRONA COUNTY INTL (CPR)

WAAS CH 63012 W21A	APP CRS 212°	Rwy Idg 10165 TDZE 5330 Apt Elev 5350
--	------------------------	--

▼ For uncompensated Baro-VNAV systems, LNAV/VNAV NA below -25°C (-13°F) or above 38°C (100°F). DME/DME RNP-0.3 NA.

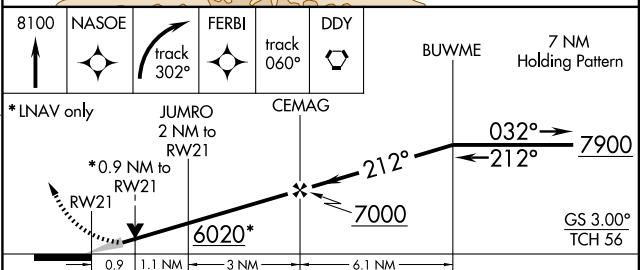
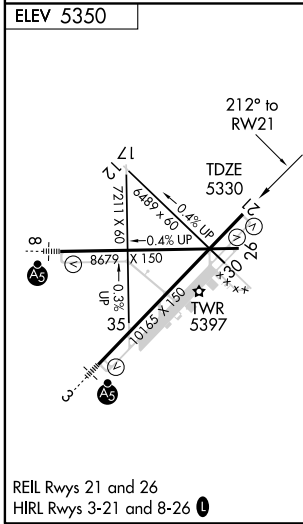
MISSED APPROACH: Climb to 8100 direct NASOE and right turn via track 302° to FERBI and via track 060° to DDY VORTAC and hold.

ATIS 126.15	CASPER APP CON * 120.65 354.1	CASPER TOWER * 118.3 (CTAF) 0 257.8	GND CON 121.9	CLNC DEL 121.9 257.8	CASPER RADIO 122.4	UNICOM 122.95
-----------------------	---	---	-------------------------	--------------------------------	------------------------------	-------------------------



NW-1, 22 OCT 2009 to 19 NOV 2009

NW-1, 22 OCT 2009 to 19 NOV 2009



CATEGORY	A	B	C	D
LPV DA		5580-3/4	250 (300-3/4)	
LNAV/VNAV DA		5629-1	299 (300-1)	
LNAV MDA		5680-1	350 (400-1)	5680-1 1/4 350 (400-1 1/4)
CIRCLING	5780-1 430 (500-1)	5800-1 450 (500-1)	5800-1 1/2 450 (500-1 1/2)	5900-2 550 (600-2)