

ALCOS THREE DEPARTURE

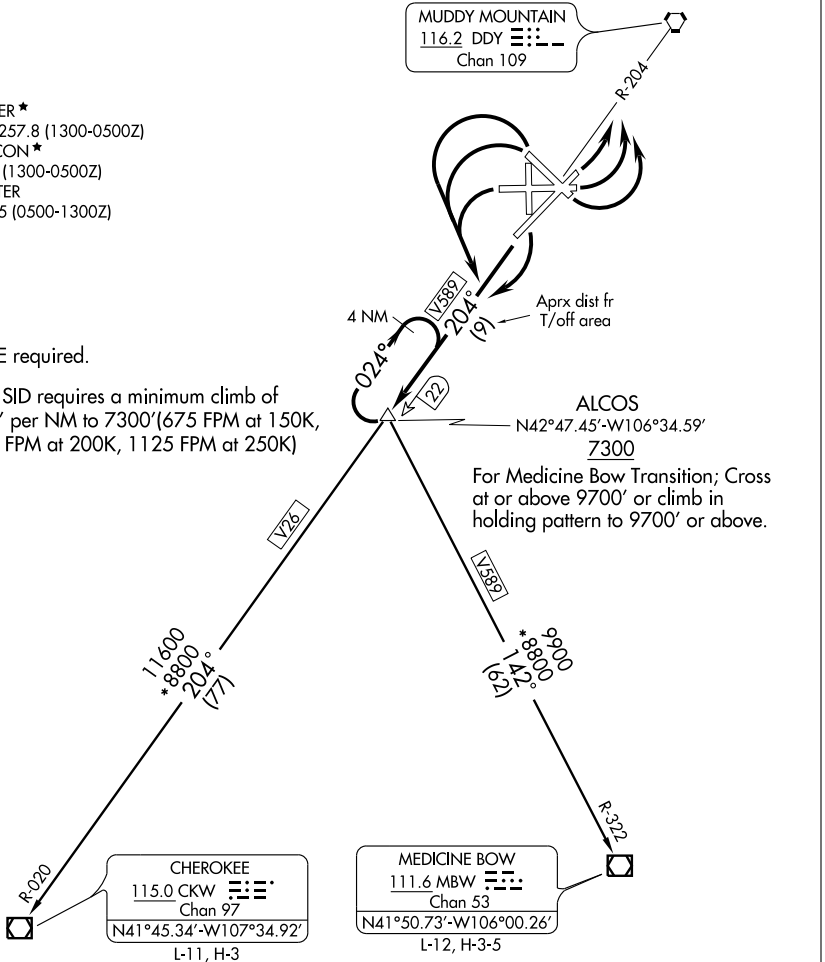
SL-72 (FAA)

CASPER/NATRONA COUNTY INTL (CPR)
CASPER, WYOMING

ATIS 126.15
 CLNC DEL
 121.9 257.8
 GND CON
 121.9 257.8
 CASPER TOWER ★
 118.3 (CTAF) 257.8 (1300-0500Z)
 CASPER DEP CON ★
 120.65 354.1 (1300-0500Z)
 DENVER CENTER
 135.6 363.025 (0500-1300Z)

NOTE: DME required.

NOTE: This SID requires a minimum climb of
 270' per NM to 7300'(675 FPM at 150K,
 900 FPM at 200K, 1125 FPM at 250K)



NOTE: Chart not to scale.

DEPARTURE ROUTE DESCRIPTION

TAKE-OFF RUNWAY 17: Turn right, thence. . . .

ALL OTHER RUNWAYS: Turn left, thence. . . .

. . . .climb via DMY R-204 to cross ALCOS INT at or above 7300', then via (transition) or (assigned route).

CHEROKEE TRANSITION (ALCOS3.CKW): Via DMY R-204 and V26 to CKW VOR/DME.

MEDICINE BOW TRANSITION (ALCOS3.MBW): Via MBW R-322 to MBW VOR/DME.
Cross ALCOS INT at or above 9700' or climb in holding pattern to 9700' or above.

ALCOS THREE DEPARTURE

NW-1, 22 OCT 2009 to 19 NOV 2009

NW-1, 22 OCT 2009 to 19 NOV 2009